

General Scope

The purpose of this document is to provide a detailed scope of work for installing a fiber optic service drop to a particular City of Unalaska facility.

City of Unalaska

Facility Name:

Location of Property



Locate Information

Utility locates are required at each site for any necessary underground trenching. A site meet will be required for the City of Unalaska to identify the location and depth of all fuel lines, pipes, conduits or cables placed by the owner in or near the trench path.

Proposed Cable Path



Legend



Proposed cable route



Building Penetration Point



Comm Room Access



Installation Notes

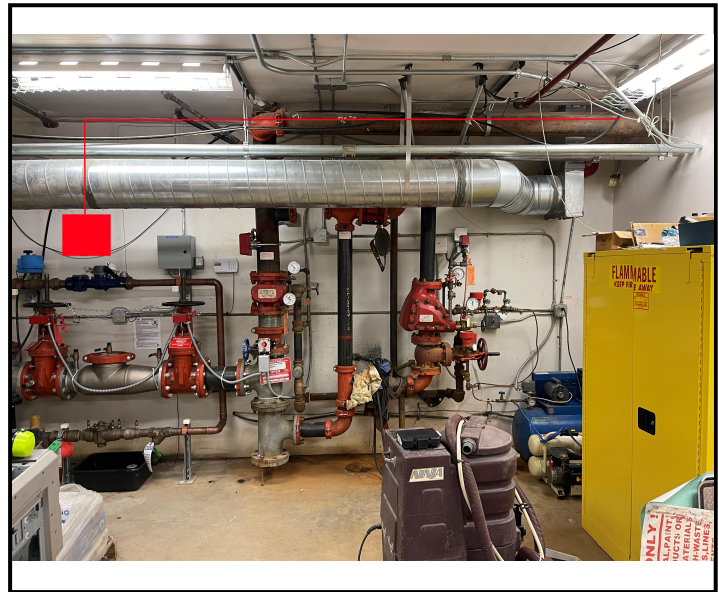


Site Survey
COU Fiber Project
City of Unalaska
Unalaska, Alaska

Date:

PON Location

Cable Routing



Cable Routing Notes



Site Survey
COU Fiber Project
City of Unalaska
Unalaska, Alaska

Date:

PON Location

General Scope

The purpose of this document is to provide a detailed scope of work for installing a fiber optic service drop to a particular City of Unalaska facility.

City of Unalaska

Facility Name:

Location of Property



Proposed Cable Path



Legend



Proposed cable route



Locate Information

Utility locates are required at each site for any necessary underground trenching. A site meet will be required for the City of Unalaska to identify the location and depth of all fuel lines, pipes, conduits or cables placed by the owner in or near the trench path.

Building Penetration Point



Comm Room Access



Installation Notes

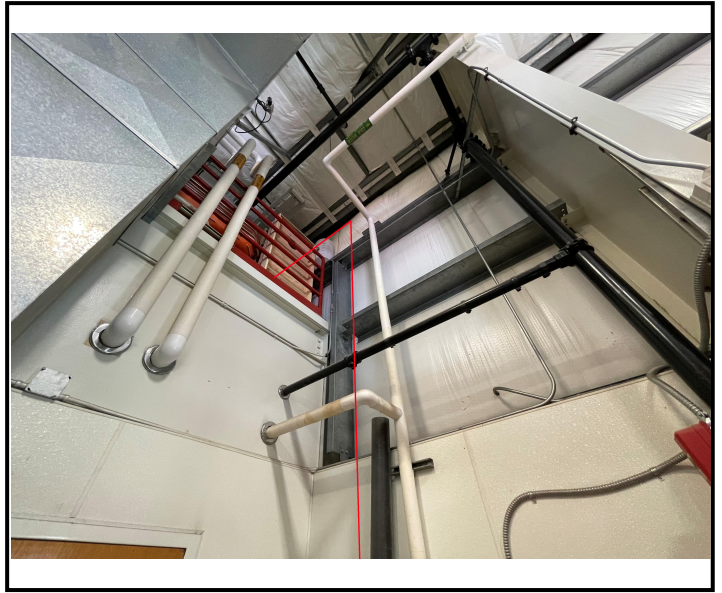
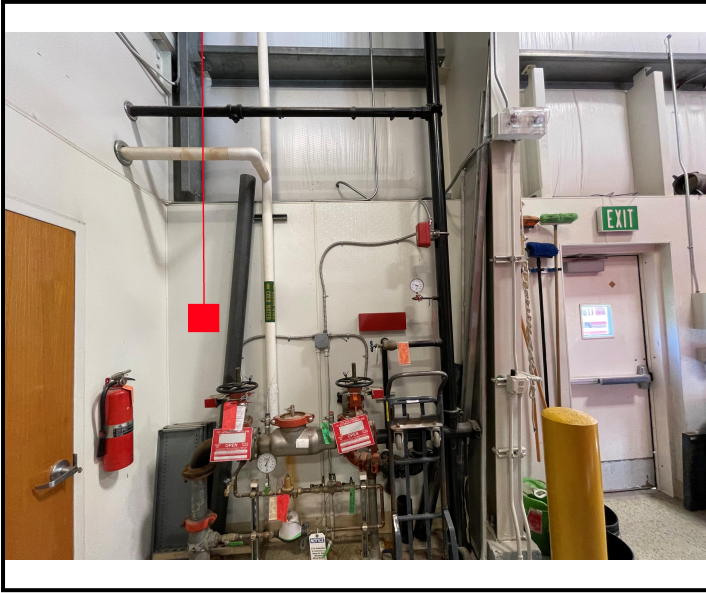


Site Survey
COU Fiber Project
City of Unalaska
Unalaska, Alaska

Date:

PON Location

Cable Routing



Cable Routing Notes



Site Survey
COU Fiber Project
City of Unalaska
Unalaska, Alaska

Date:

PON Location

General Scope

The purpose of this document is to provide a detailed scope of work for installing a fiber optic service drop to a particular City of Unalaska facility.

City of Unalaska

Facility Name:

Location of Property



Locate Information



Proposed Cable Path



Legend



Proposed cable route



Building Penetration Point



Comm Room Access

Installation Notes

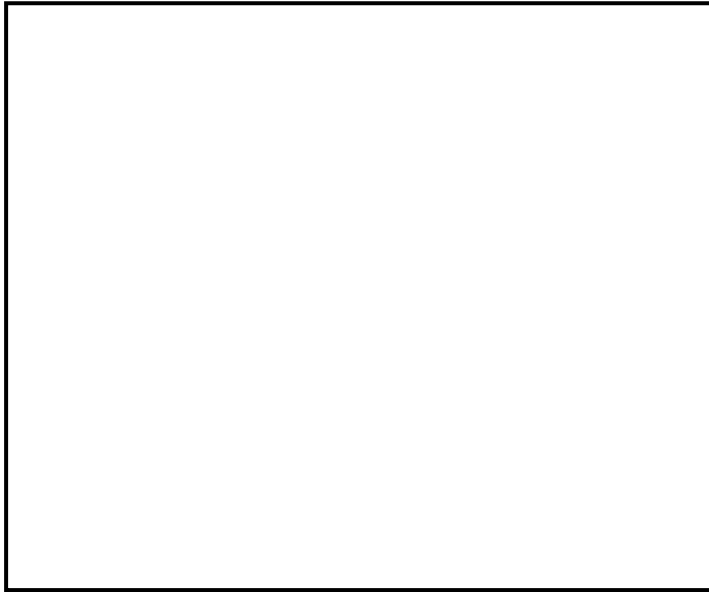
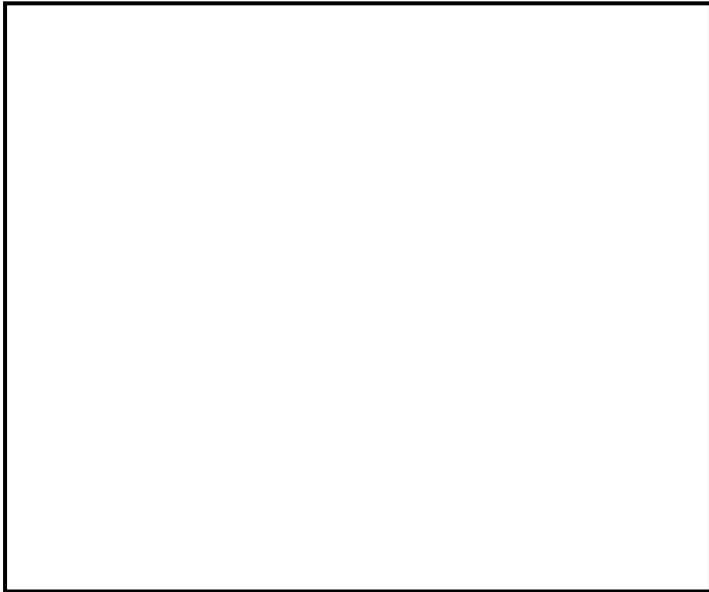


Site Survey
COU Fiber Project
City of Unalaska
Unalaska, Alaska

Date:

PON Location

Cable Routing



Cable Routing Notes



Site Survey
COU Fiber Project
City of Unalaska
Unalaska, Alaska

Date:

PON Location

General Scope

The purpose of this document is to provide a detailed scope of work for installing a fiber optic service drop to a particular City of Unalaska facility.

City of Unalaska

Facility Name:

Location of Property



Proposed Cable Path



Legend



Proposed cable route



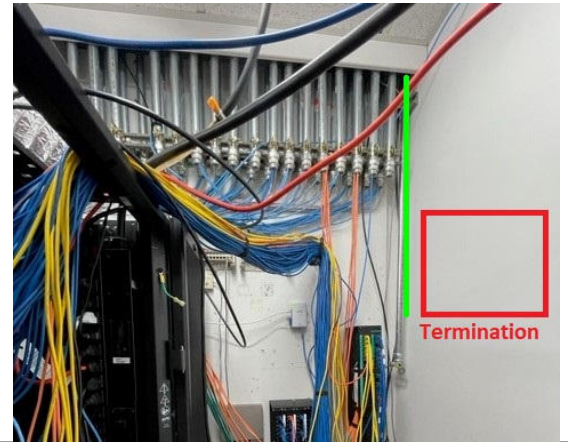
Locate Information

Utility locates are required at each site for any necessary underground trenching. A site meet will be required for the City of Unalaska to identify the location and depth of all fuel lines, pipes, conduits or cables placed by the owner in or near the trench path.

Building Penetration Point



Comm Room Access



Installation Notes

Existing building penetration exists with exterior conduit. Open drop ceiling from penetration to comm room. Plenty of wall space for termination. Existing underground conduit exists from transformer at roadside to the building penetration.

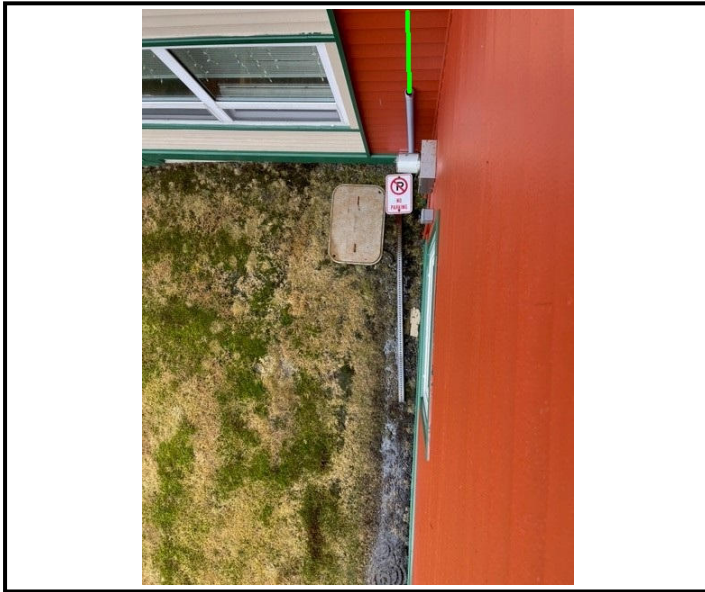
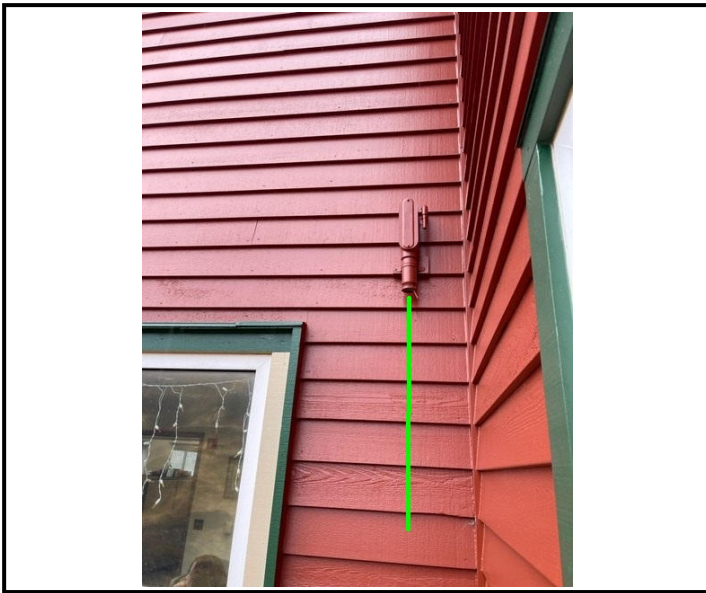
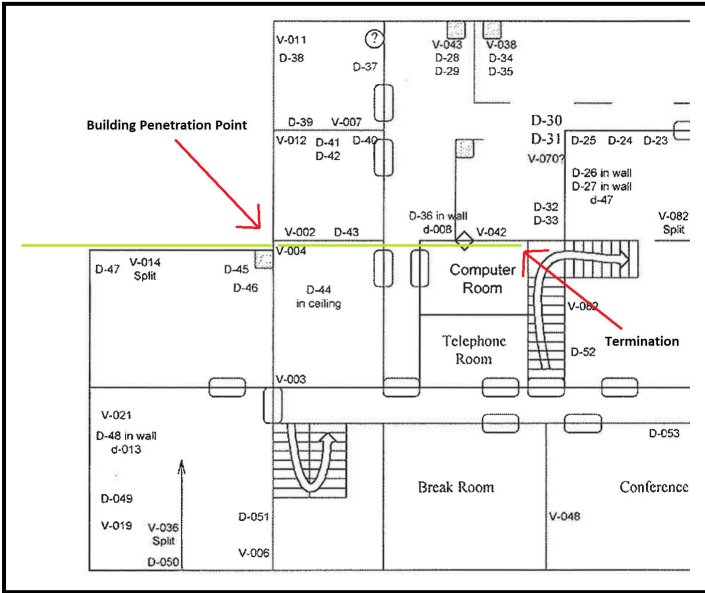


Site Survey
COU Fiber Project
City of Unalaska
Unalaska, Alaska

Date:

PON Location

Cable Routing



Cable Routing Notes



Site Survey
COU Fiber Project
 City of Unalaska
 Unalaska, Alaska

Date:

PON Location

General Scope

The purpose of this document is to provide a detailed scope of work for installing a fiber optic service drop to a particular City of Unalaska facility.

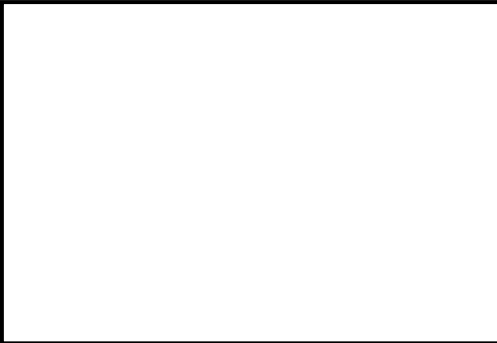
City of Unalaska

Facility Name:

Location of Property



Locate Information



Proposed Cable Path



Legend



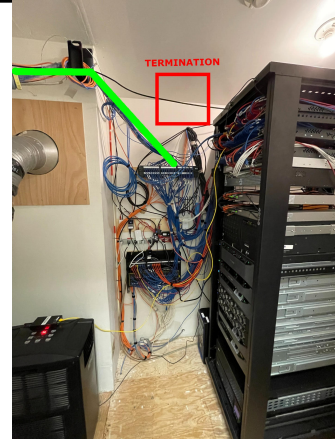
Proposed cable route



Building Penetration Point



Comm Room Access



Installation Notes

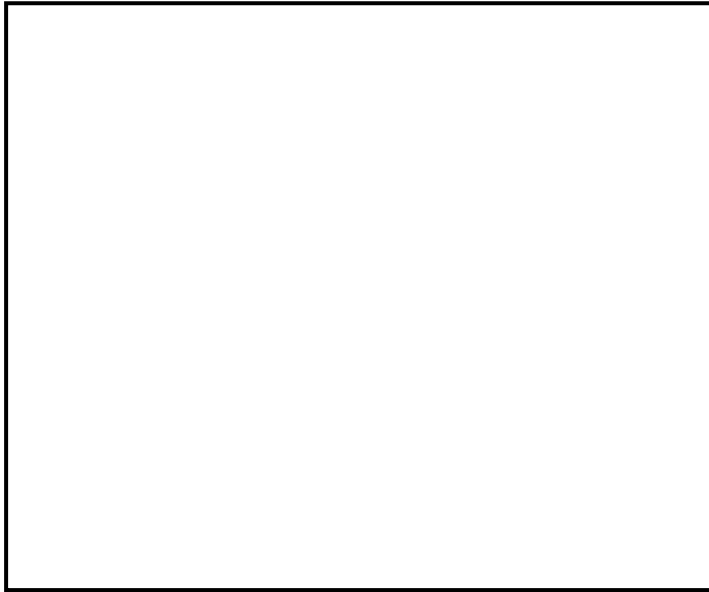
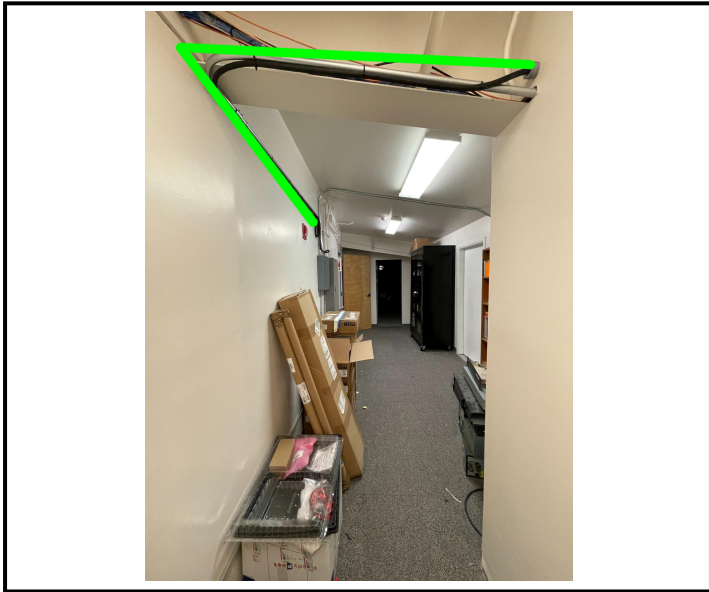
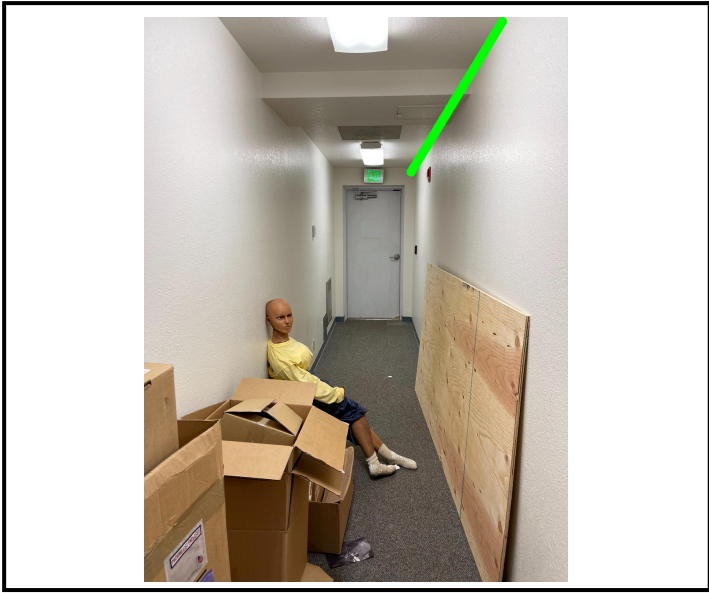


Site Survey
COU Fiber Project
City of Unalaska
Unalaska, Alaska

Date:

PON Location

Cable Routing



Cable Routing Notes



Site Survey
COU Fiber Project
City of Unalaska
Unalaska, Alaska

Date:

PON Location

General Scope

The purpose of this document is to provide a detailed scope of work for installing a fiber optic service drop to a particular City of Unalaska facility.

City of Unalaska

Facility Name:

Location of Property



Proposed Cable Path



Legend



Proposed cable route



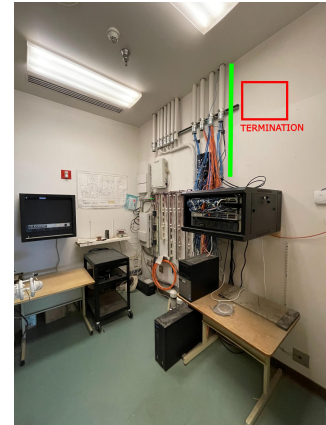
Locate Information

Utility locates are required at each site for any necessary underground trenching. A site meet will be required for the City of Unalaska to identify the location and depth of all fuel lines, pipes, conduits or cables placed by the owner in or near the trench path.

Building Penetration Point



Comm Room Access



Installation Notes

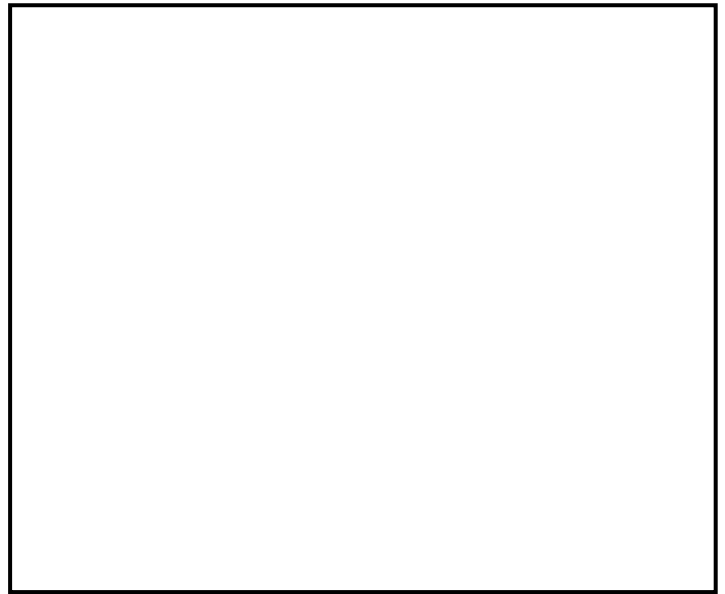
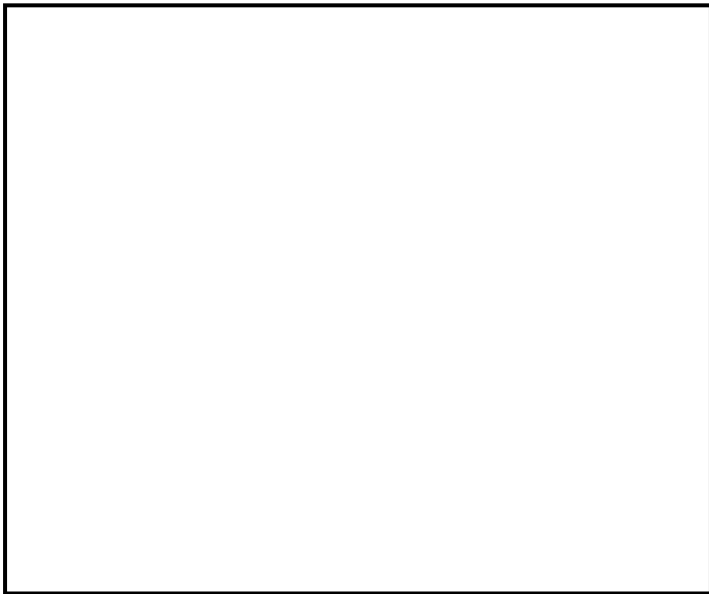
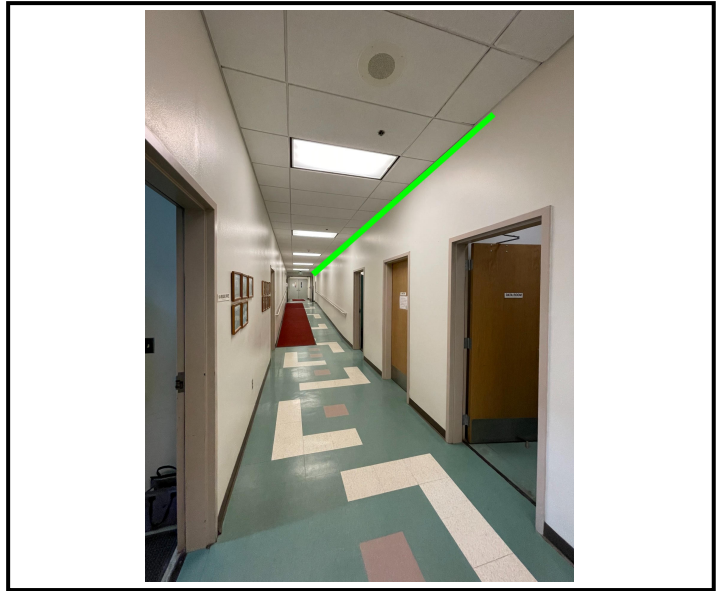
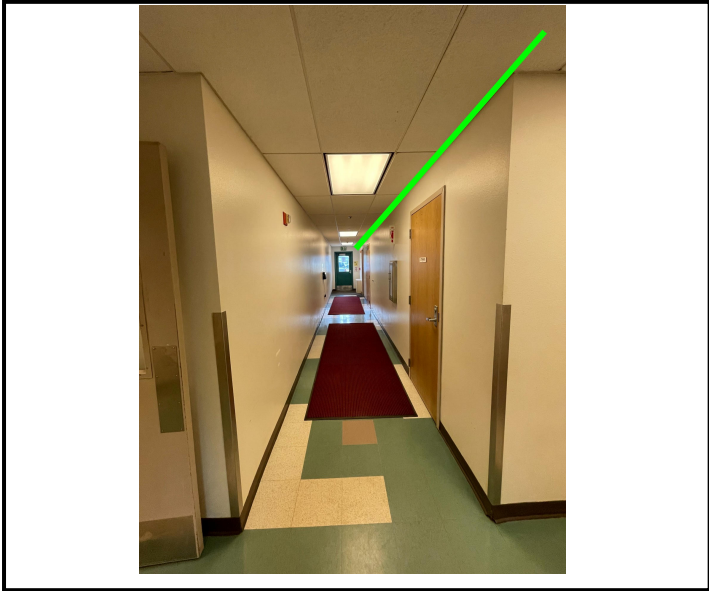


Site Survey
COU Fiber Project
City of Unalaska
Unalaska, Alaska

Date:

PON Location

Cable Routing



Cable Routing Notes



Site Survey
COU Fiber Project
City of Unalaska
Unalaska, Alaska

Date:

PON Location

General Scope

The purpose of this document is to provide a detailed scope of work for installing a fiber optic service drop to a particular City of Unalaska facility.

City of Unalaska

Facility Name:

Location of Property



Proposed Cable Path



Legend



Proposed cable route



Locate Information

Utility locates are required at each site for any necessary underground trenching. A site meet will be required for the City of Unalaska to identify the location and depth of all fuel lines, pipes, conduits or cables placed by the owner in or near the trench path.

Building Penetration Point



Comm Room Access



Installation Notes

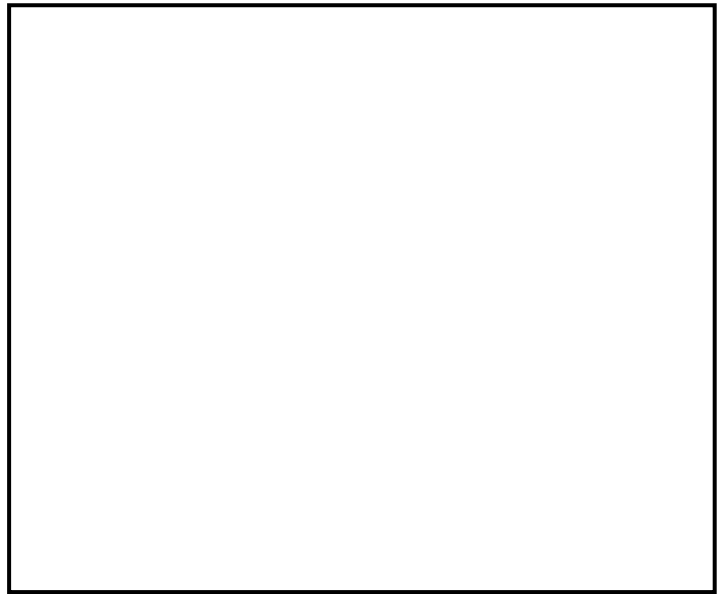
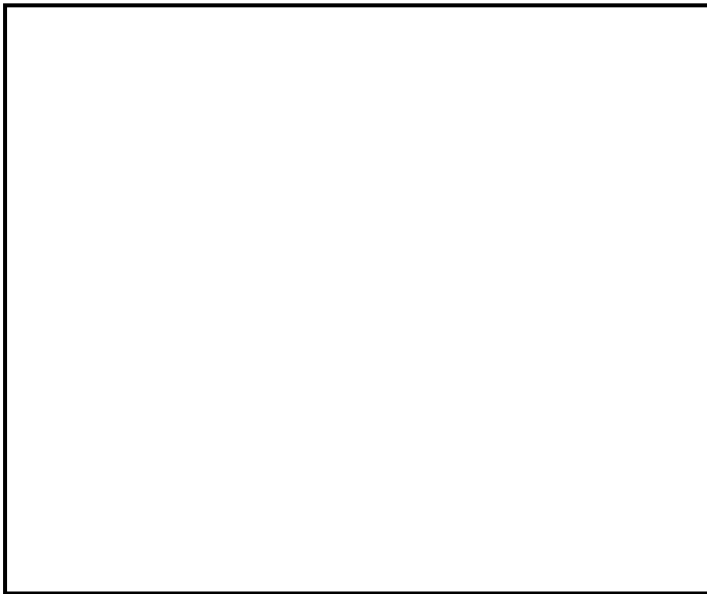
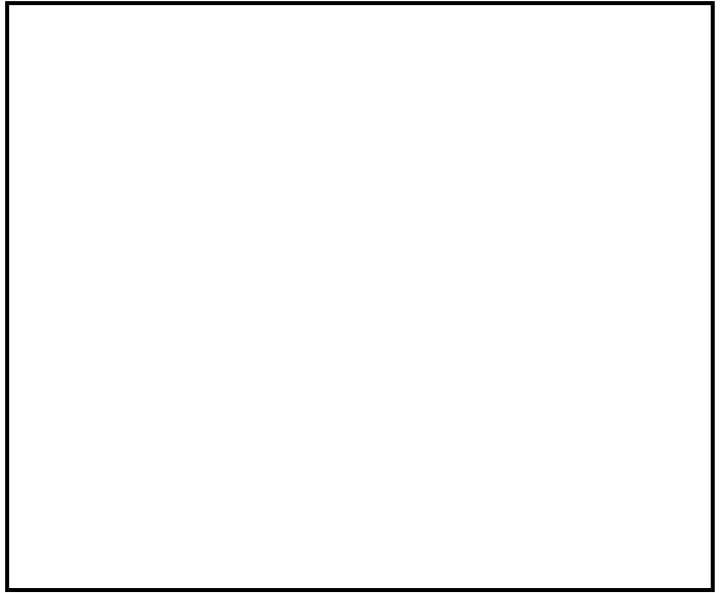
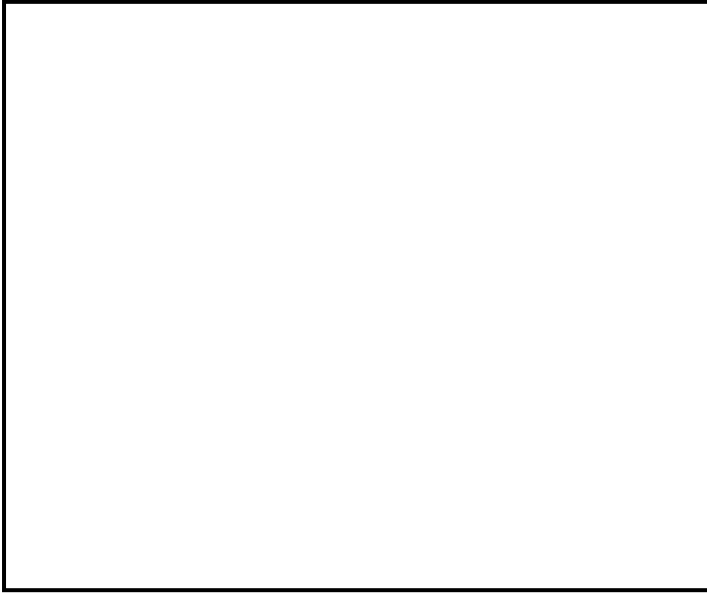


Site Survey
COU Fiber Project
City of Unalaska
Unalaska, Alaska

Date:

PON Location

Cable Routing



Cable Routing Notes



Site Survey
COU Fiber Project
City of Unalaska
Unalaska, Alaska

Date:



PON Location



General Scope

The purpose of this document is to provide a detailed scope of work for installing a fiber optic service drop to a particular City of Unalaska facility.

City of Unalaska

Facility Name:

Location of Property



Proposed Cable Path



Legend



Proposed cable route



Locate Information

Utility locates are required at each site for any necessary underground trenching. A site meet will be required for the City of Unalaska to identify the location and depth of all fuel lines, pipes, conduits or cables placed by the owner in or near the trench path.

Building Penetration Point



Comm Room Access

Installation Notes



Site Survey
COU Fiber Project
City of Unalaska
Unalaska, Alaska

Date:

PON Location

Cable Routing

Cable Routing Notes



Site Survey
COU Fiber Project
City of Unalaska
Unalaska, Alaska

Date:

PON Location

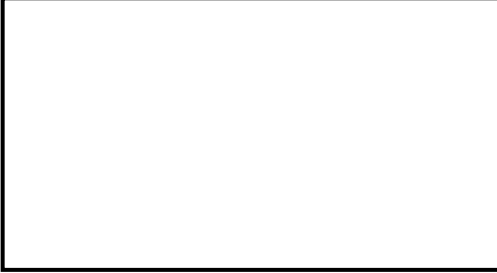
General Scope

The purpose of this document is to provide a detailed scope of work for installing a fiber optic service drop to a particular City of Unalaska facility.

City of Unalaska

Facility Name:

Location of Property



Proposed Cable Path



Legend



Proposed cable route



Locate Information

Utility locates are required at each site for any necessary underground trenching. A site meet will be required for the City of Unalaska to identify the location and depth of all fuel lines, pipes, conduits or cables placed by the owner in or near the trench path.

Building Penetration Point



Comm Room Access



Installation Notes

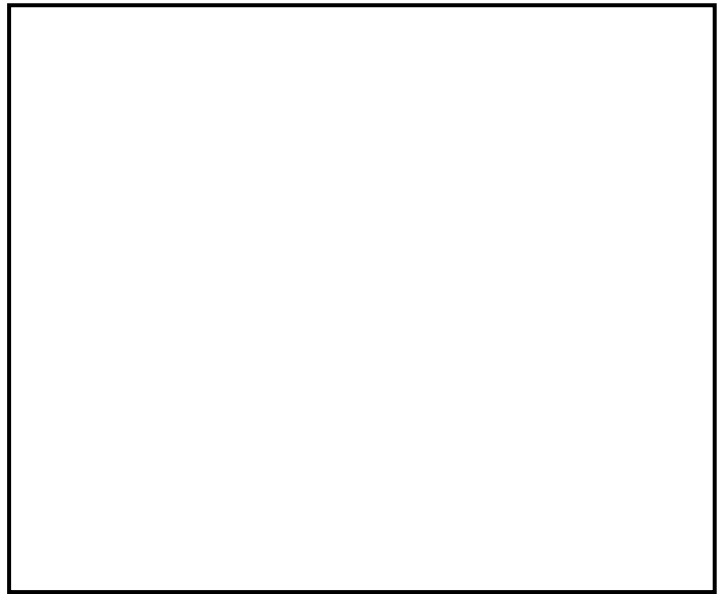
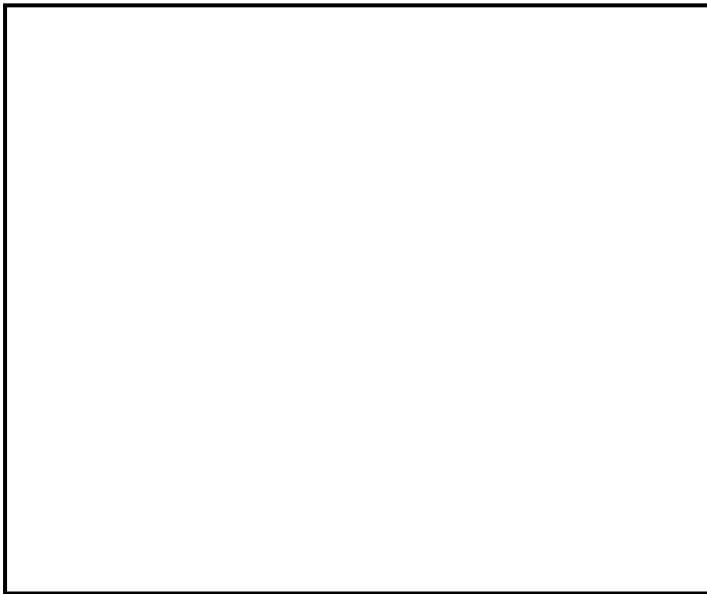
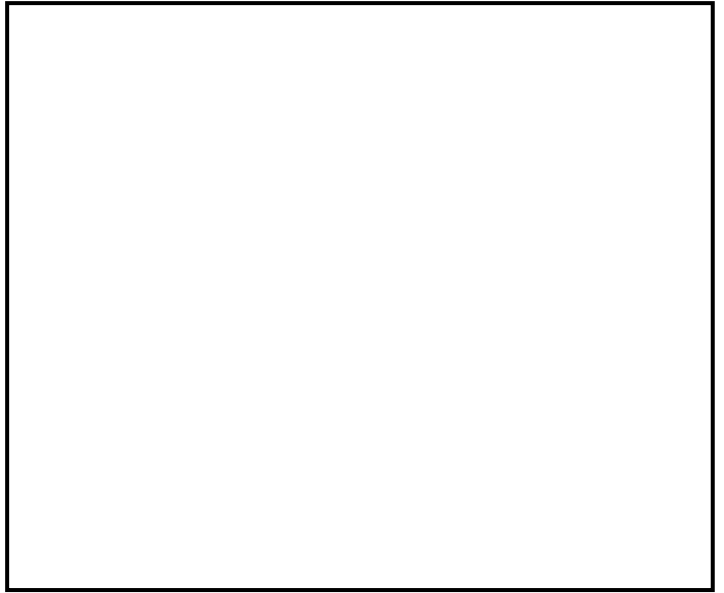
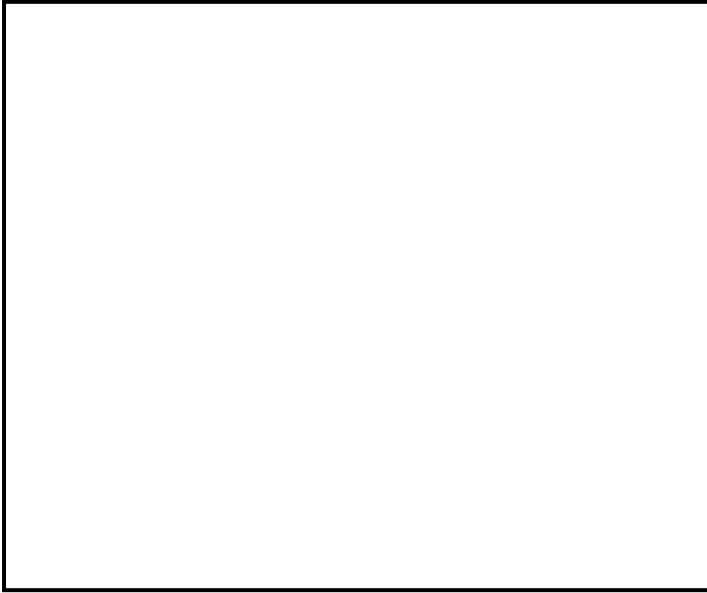


Site Survey
COU Fiber Project
City of Unalaska
Unalaska, Alaska

Date:

PON Location

Cable Routing



Cable Routing Notes



Site Survey
COU Fiber Project
City of Unalaska
Unalaska, Alaska

Date:



PON Location



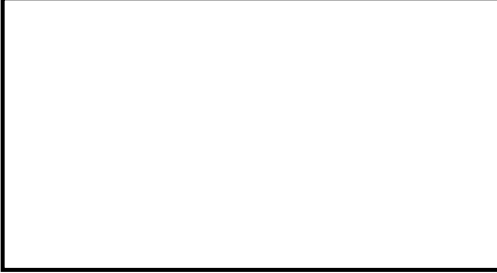
General Scope

The purpose of this document is to provide a detailed scope of work for installing a fiber optic service drop to a particular City of Unalaska facility.

City of Unalaska

Facility Name:

Location of Property



Proposed Cable Path



Legend



Proposed cable route



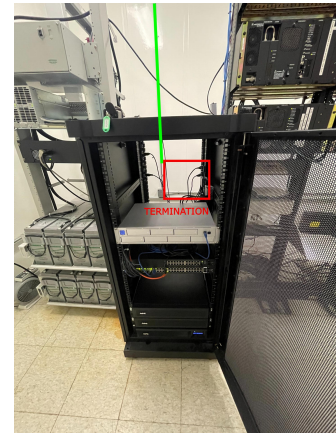
Locate Information

Utility locates are required at each site for any necessary underground trenching. A site meet will be required for the City of Unalaska to identify the location and depth of all fuel lines, pipes, conduits or cables placed by the owner in or near the trench path.

Building Penetration Point



Comm Room Access



Installation Notes

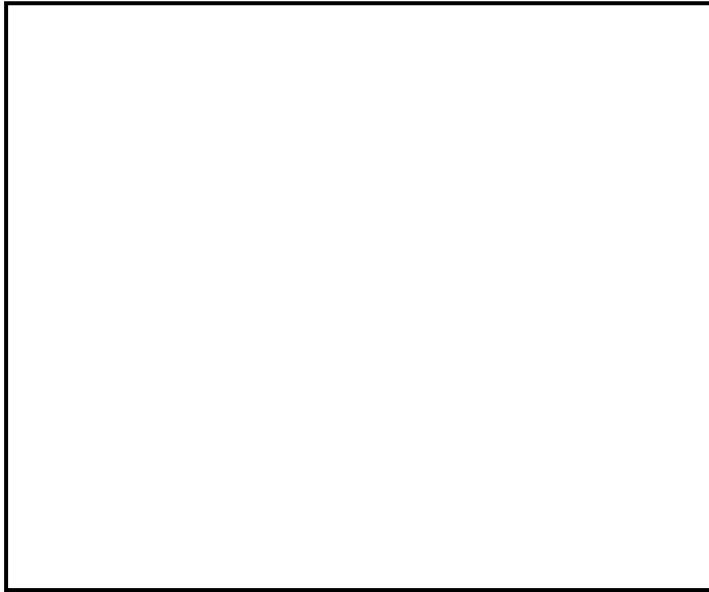
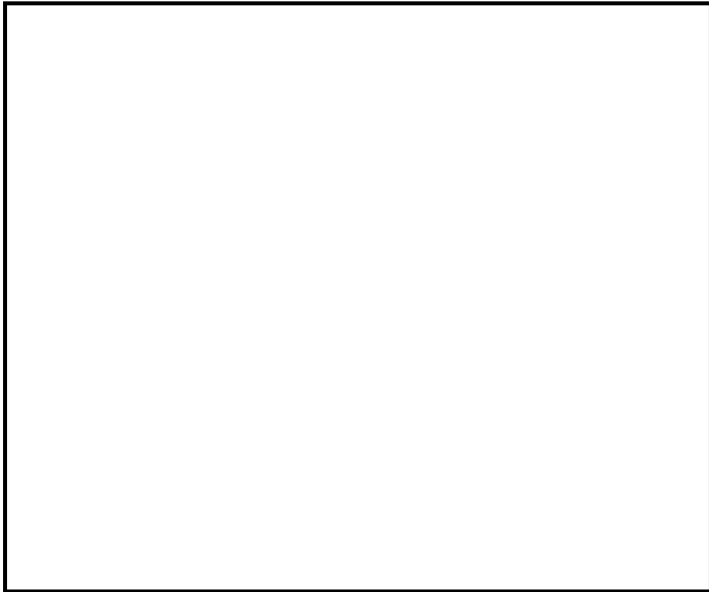
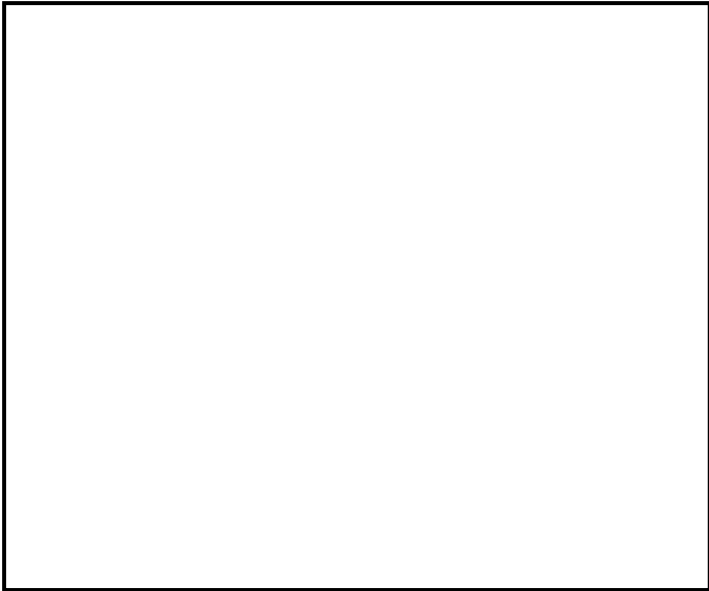


Site Survey
COU Fiber Project
City of Unalaska
Unalaska, Alaska

Date:

PON Location

Cable Routing



Cable Routing Notes



Site Survey
COU Fiber Project
City of Unalaska
Unalaska, Alaska

Date:

PON Location

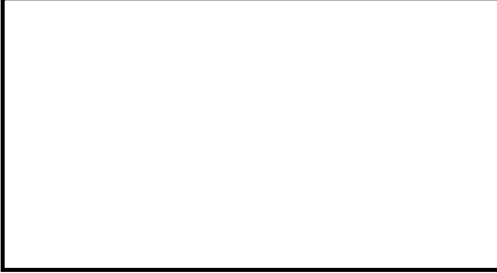
General Scope

The purpose of this document is to provide a detailed scope of work for installing a fiber optic service drop to a particular City of Unalaska facility.

City of Unalaska

Facility Name:

Location of Property



Proposed Cable Path



Legend



Proposed cable route



Locate Information

Utility locates are required at each site for any necessary underground trenching. A site meet will be required for the City of Unalaska to identify the location and depth of all fuel lines, pipes, conduits or cables placed by the owner in or near the trench path.

Building Penetration Point

Comm Room Access



Installation Notes



Site Survey
COU Fiber Project
City of Unalaska
Unalaska, Alaska

Date:

PON Location

Cable Routing

Cable Routing Notes



Site Survey
COU Fiber Project
City of Unalaska
Unalaska, Alaska

Date:

PON Location

General Scope

The purpose of this document is to provide a detailed scope of work for installing a fiber optic service drop to a particular City of Unalaska facility.

City of Unalaska

Facility Name:

Location of Property



Proposed Cable Path



Legend



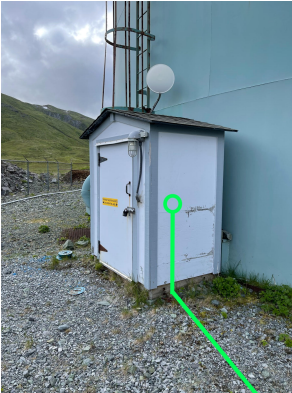
Proposed cable route



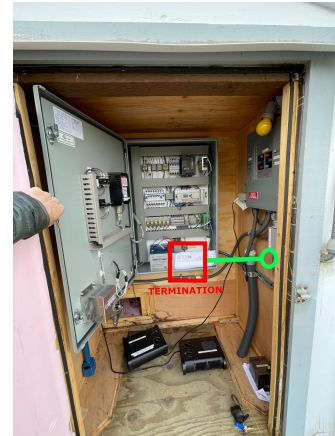
Locate Information

Utility locates are required at each site for any necessary underground trenching. A site meet will be required for the City of Unalaska to identify the location and depth of all fuel lines, pipes, conduits or cables placed by the owner in or near the trench path.

Building Penetration Point



Comm Room Access



Installation Notes

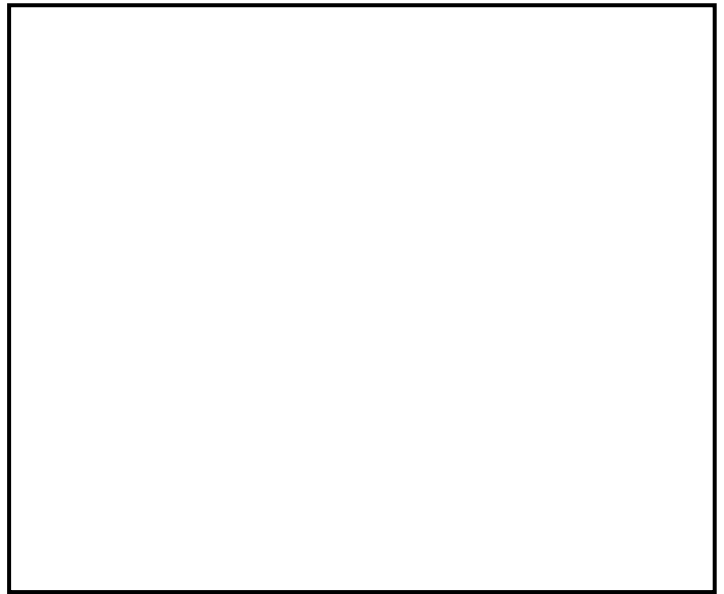
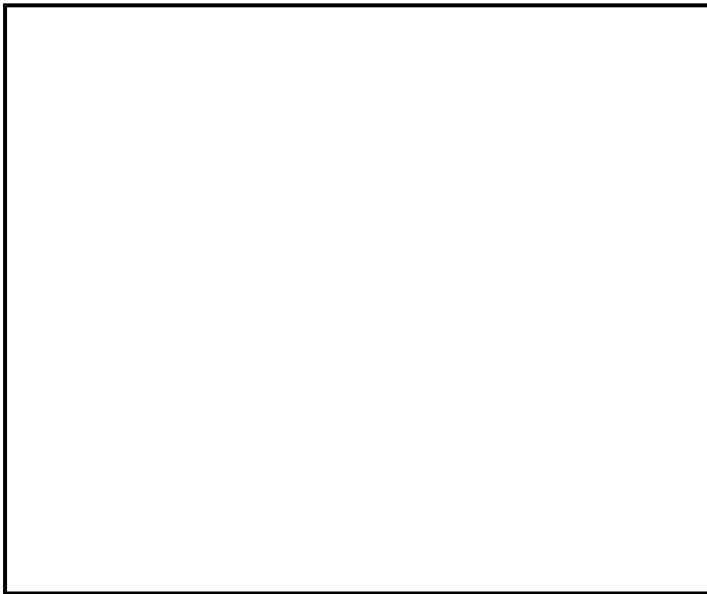
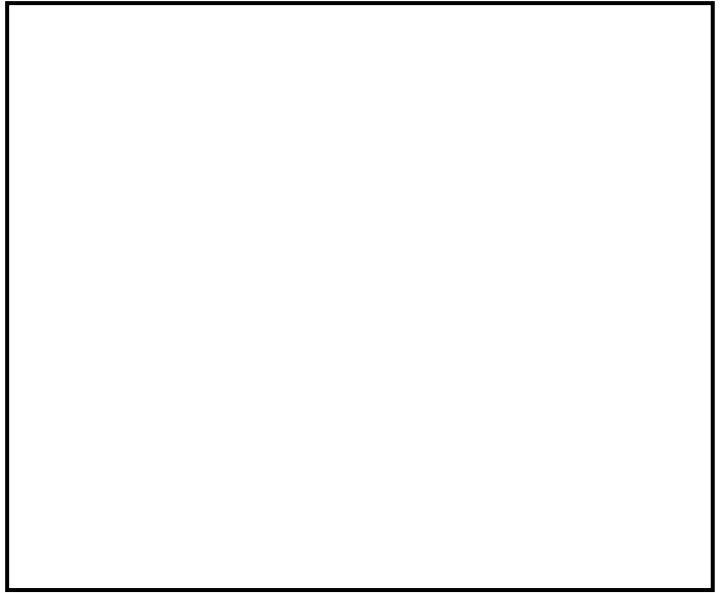
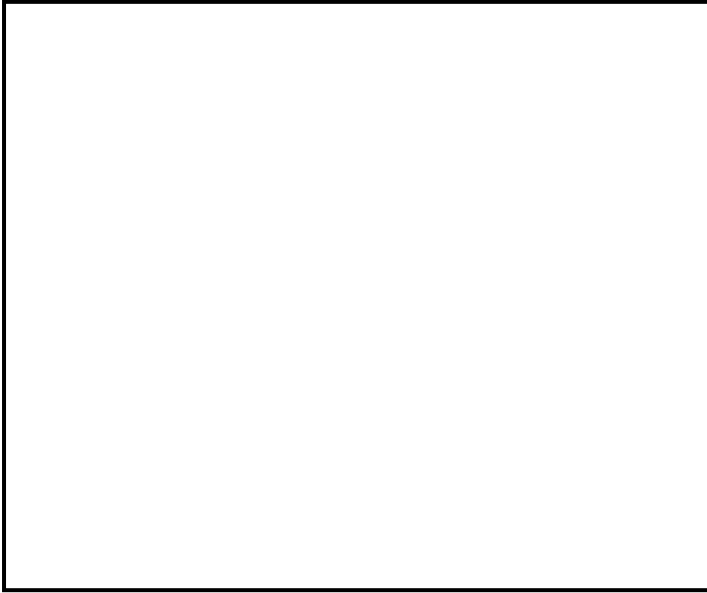


Site Survey
COU Fiber Project
City of Unalaska
Unalaska, Alaska

Date:

PON Location

Cable Routing



Cable Routing Notes



Site Survey
COU Fiber Project
City of Unalaska
Unalaska, Alaska

Date:



PON Location



General Scope

The purpose of this document is to provide a detailed scope of work for installing a fiber optic service drop to a particular City of Unalaska facility.

City of Unalaska

Facility Name:

Location of Property



Proposed Cable Path



Legend



Proposed cable route



Locate Information

Utility locates are required at each site for any necessary underground trenching. A site meet will be required for the City of Unalaska to identify the location and depth of all fuel lines, pipes, conduits or cables placed by the owner in or near the trench path.

Building Penetration Point



Comm Room Access



Installation Notes

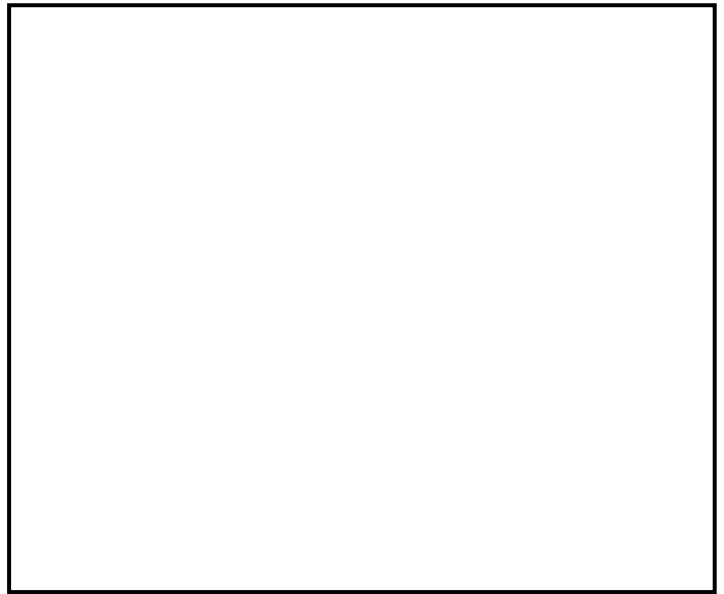
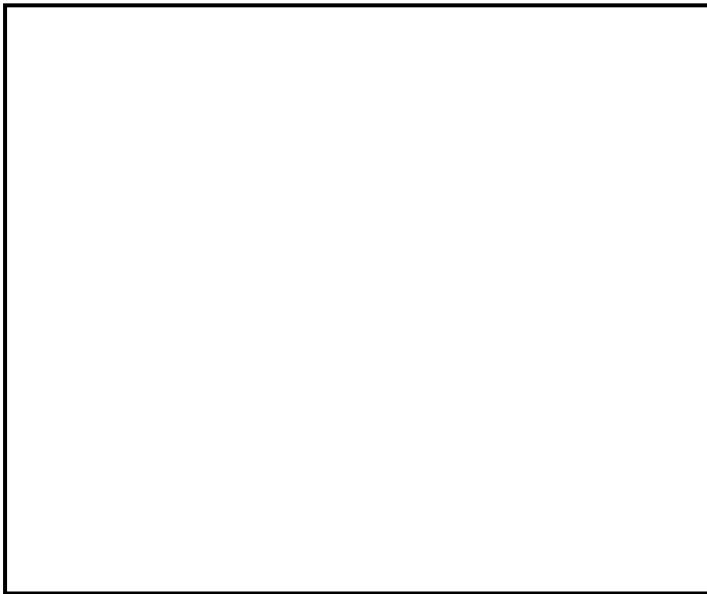
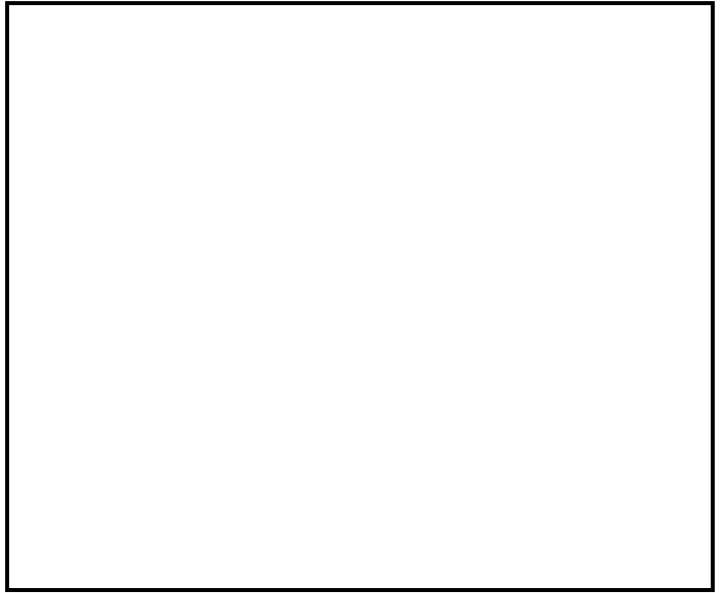
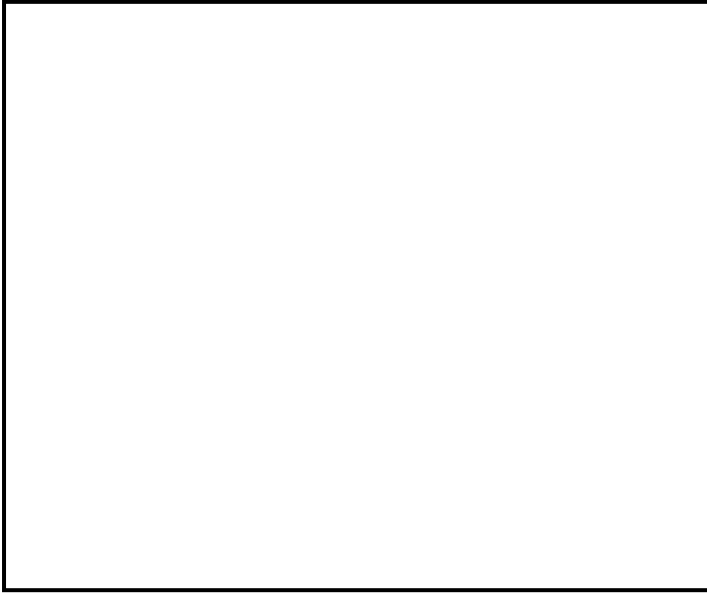


Site Survey
COU Fiber Project
City of Unalaska
Unalaska, Alaska

Date:

PON Location

Cable Routing



Cable Routing Notes



Site Survey
COU Fiber Project
City of Unalaska
Unalaska, Alaska

Date:



PON Location



General Scope

The purpose of this document is to provide a detailed scope of work for installing a fiber optic service drop to a particular City of Unalaska facility.

City of Unalaska

Facility Name:

Location of Property



Proposed Cable Path



Legend



Proposed cable route



Locate Information

Utility locates are required at each site for any necessary underground trenching. A site meet will be required for the City of Unalaska to identify the location and depth of all fuel lines, pipes, conduits or cables placed by the owner in or near the trench path.

Building Penetration Point



Comm Room Access



Installation Notes

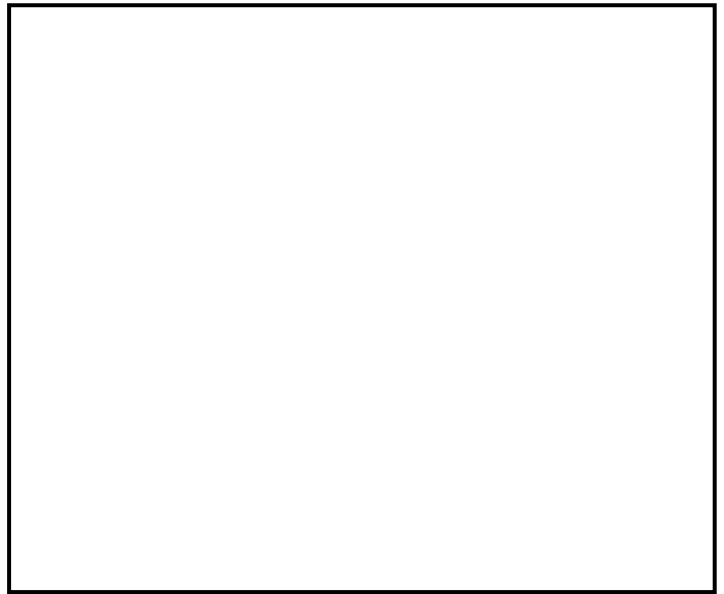
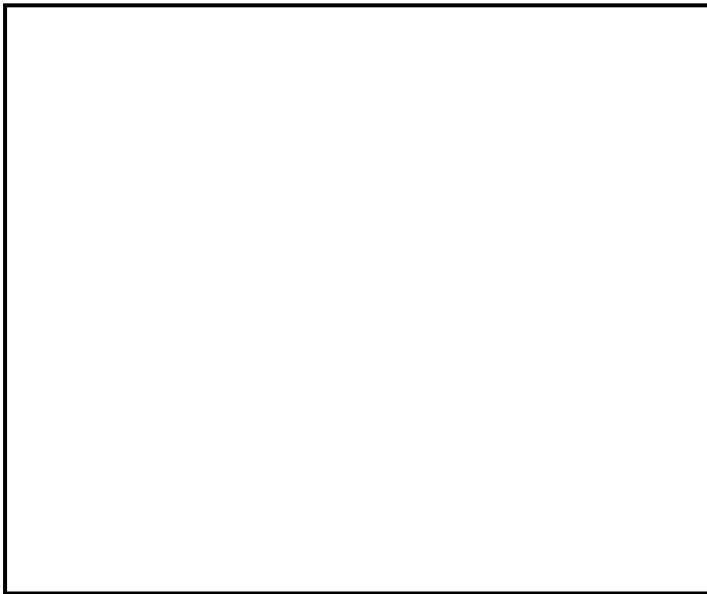
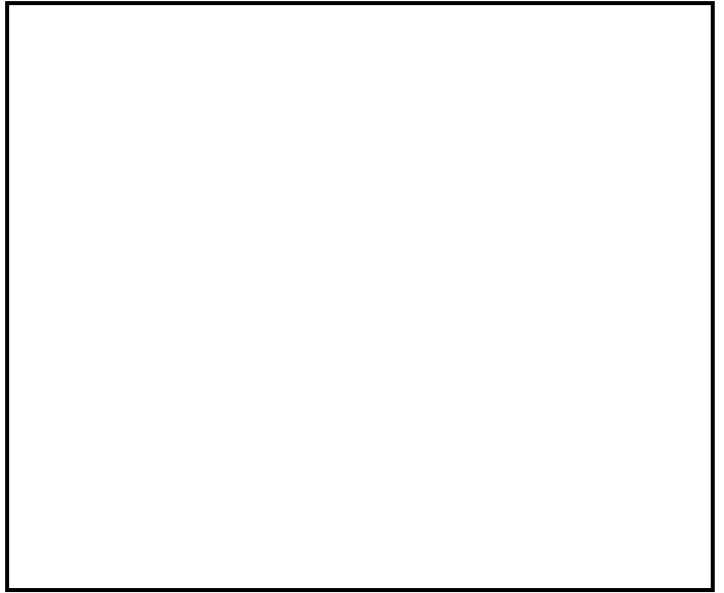
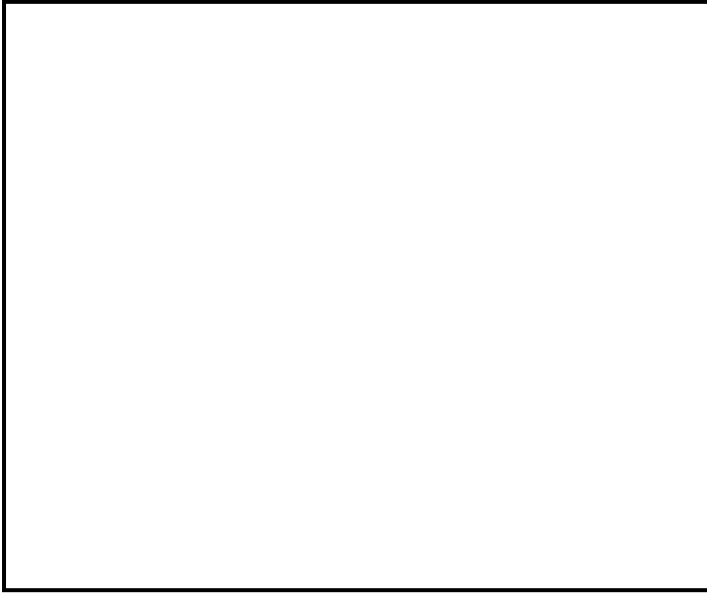


Site Survey
COU Fiber Project
City of Unalaska
Unalaska, Alaska

Date:

PON Location

Cable Routing



Cable Routing Notes



Site Survey
COU Fiber Project
City of Unalaska
Unalaska, Alaska

Date:



PON Location



General Scope

The purpose of this document is to provide a detailed scope of work for installing a fiber optic service drop to a particular City of Unalaska facility.

City of Unalaska

Facility Name:

Location of Property



Proposed Cable Path



Legend



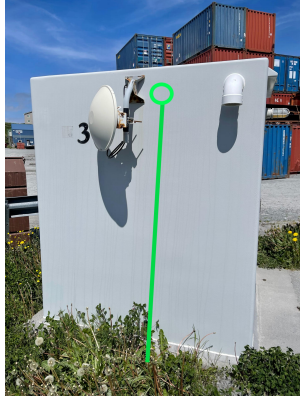
Proposed cable route



Locate Information

Utility locates are required at each site for any necessary underground trenching. A site meet will be required for the City of Unalaska to identify the location and depth of all fuel lines, pipes, conduits or cables placed by the owner in or near the trench path.

Building Penetration Point



Comm Room Access



Installation Notes

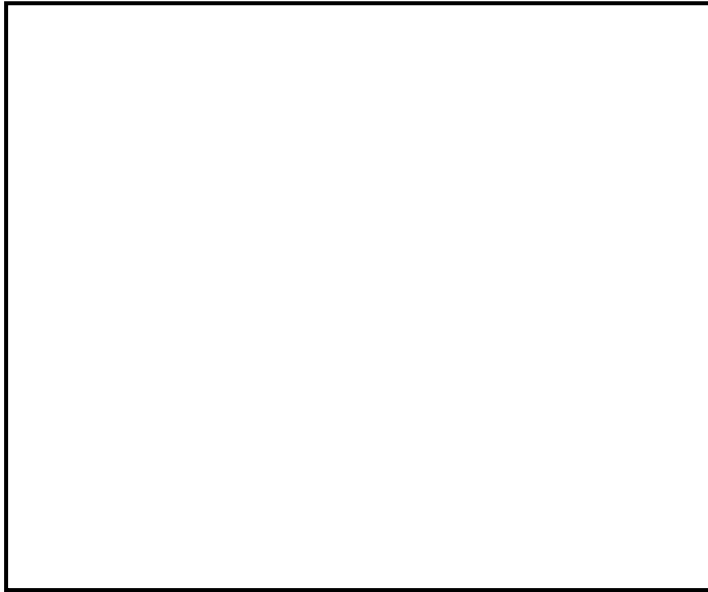
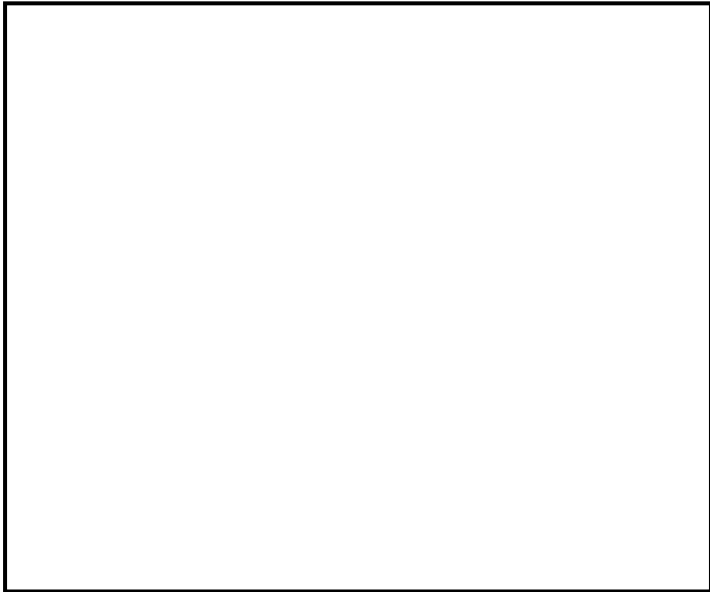
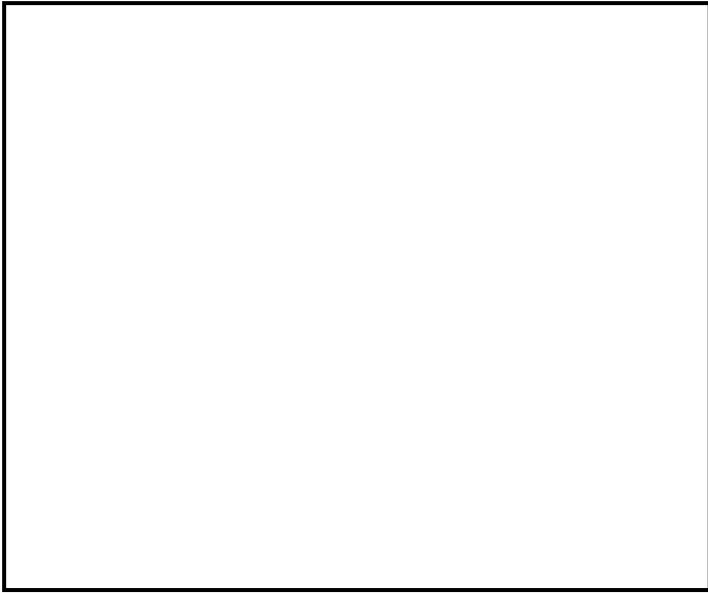


Site Survey
COU Fiber Project
City of Unalaska
Unalaska, Alaska

Date:

PON Location

Cable Routing



Cable Routing Notes



Site Survey
COU Fiber Project
City of Unalaska
Unalaska, Alaska

Date:

PON Location

General Scope

The purpose of this document is to provide a detailed scope of work for installing a fiber optic service drop to a particular City of Unalaska facility.

City of Unalaska

Facility Name:

Location of Property



Proposed Cable Path



Legend



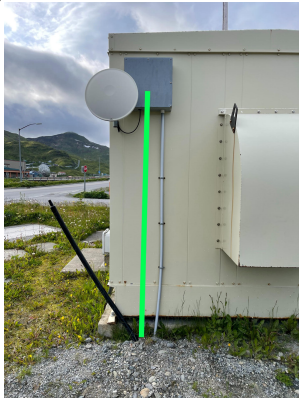
Proposed cable route



Locate Information

Utility locates are required at each site for any necessary underground trenching. A site meet will be required for the City of Unalaska to identify the location and depth of all fuel lines, pipes, conduits or cables placed by the owner in or near the trench path.

Building Penetration Point



Comm Room Access

Installation Notes

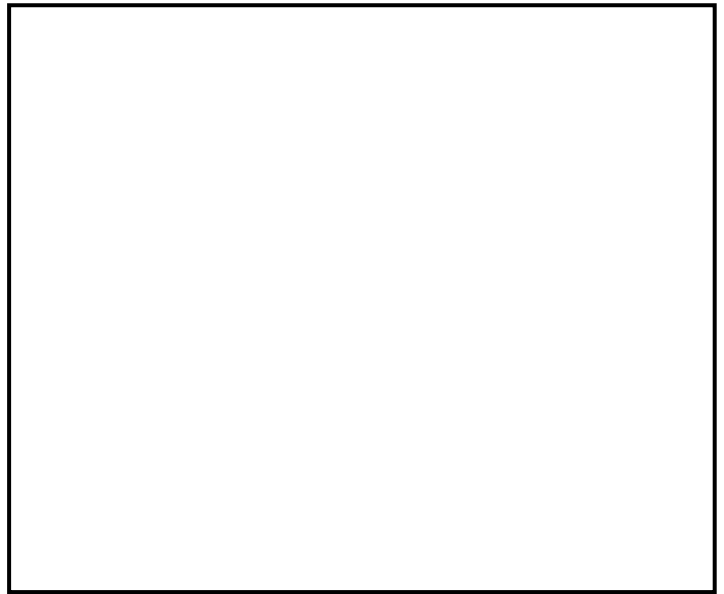
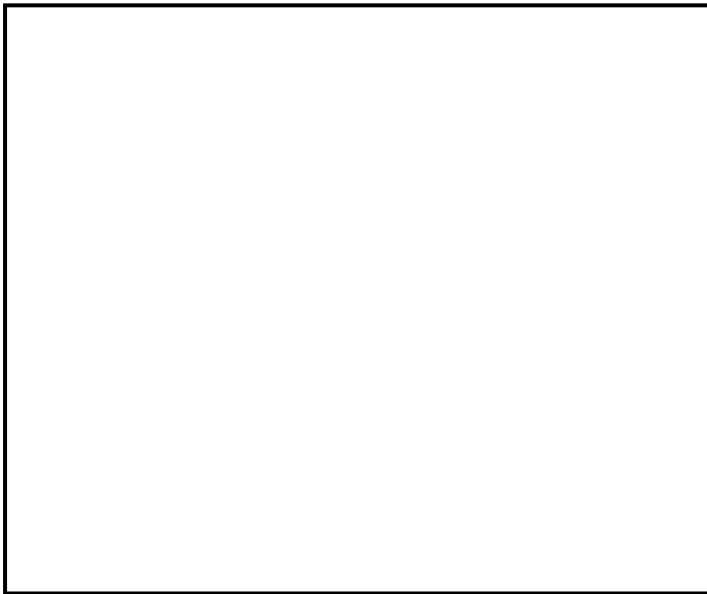
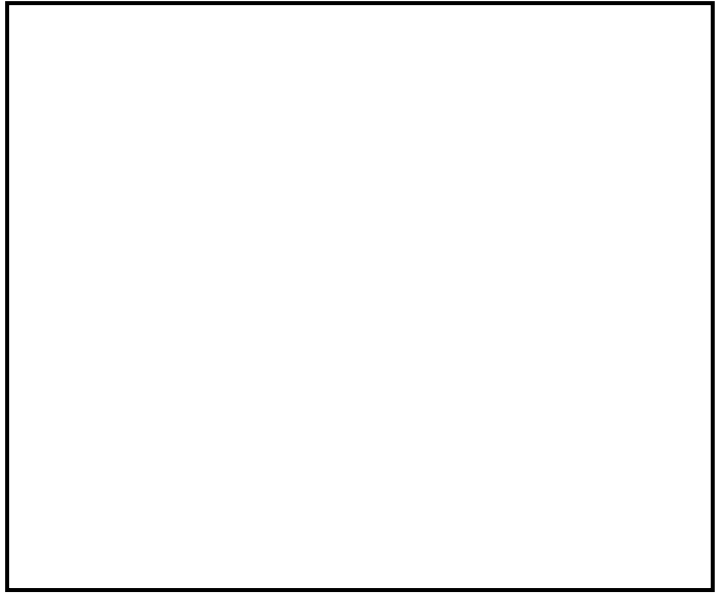
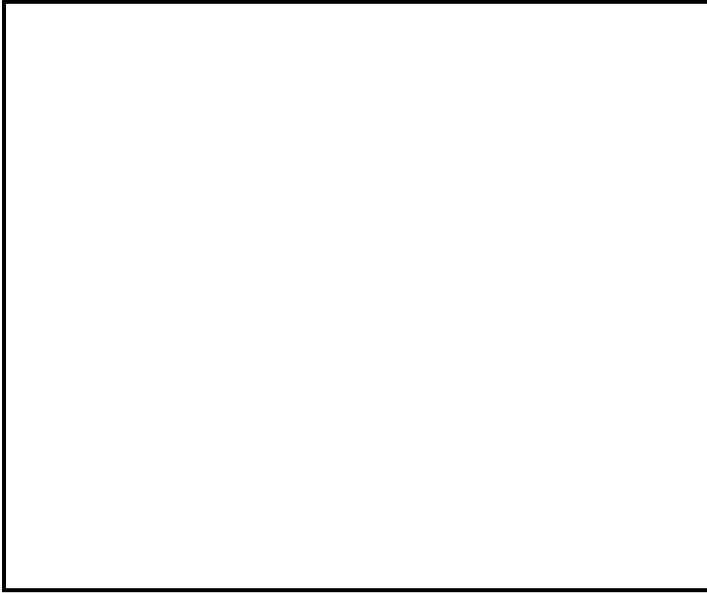


Site Survey
COU Fiber Project
City of Unalaska
Unalaska, Alaska

Date:

PON Location

Cable Routing



Cable Routing Notes



Site Survey
COU Fiber Project
City of Unalaska
Unalaska, Alaska

Date:



PON Location



General Scope

The purpose of this document is to provide a detailed scope of work for installing a fiber optic service drop to a particular City of Unalaska facility.

City of Unalaska

Facility Name:

Location of Property



Locate Information

Utility locates are required at each site for any necessary underground trenching. A site meet will be required for the City of Unalaska to identify the location and depth of all fuel lines, pipes, conduits or cables placed by the owner in or near the trench path.

Proposed Cable Path



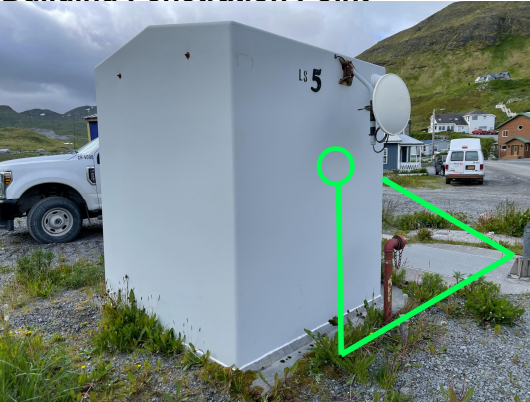
Legend



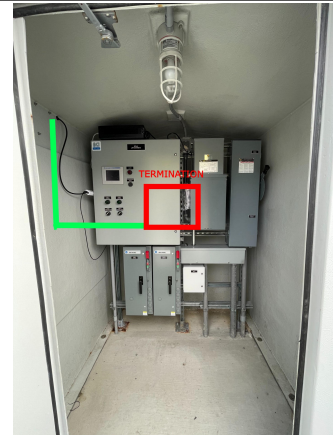
Proposed cable route



Building Penetration Point



Comm Room Access



Installation Notes

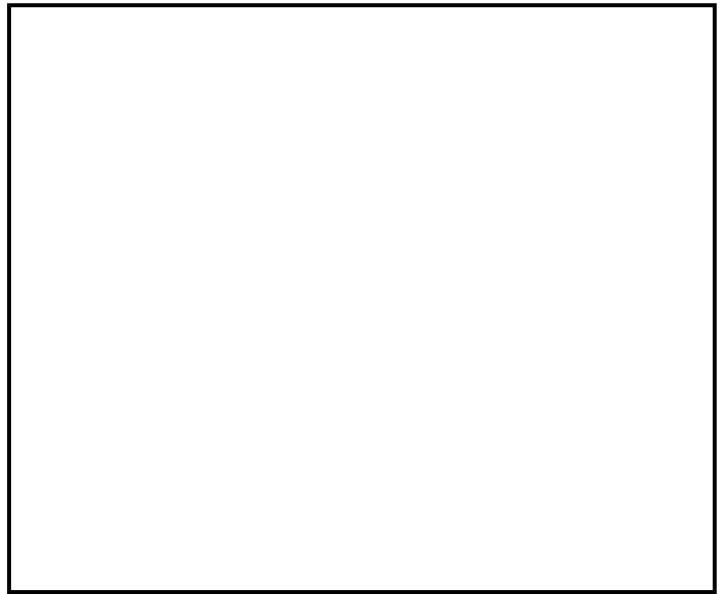
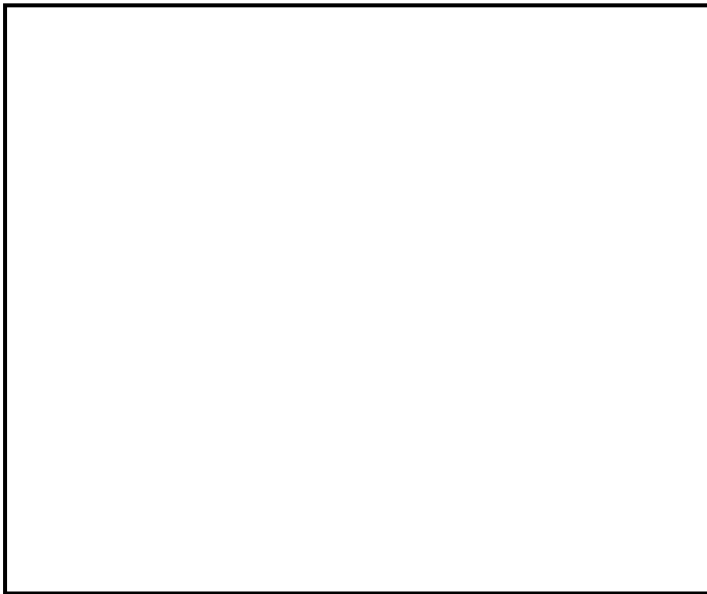
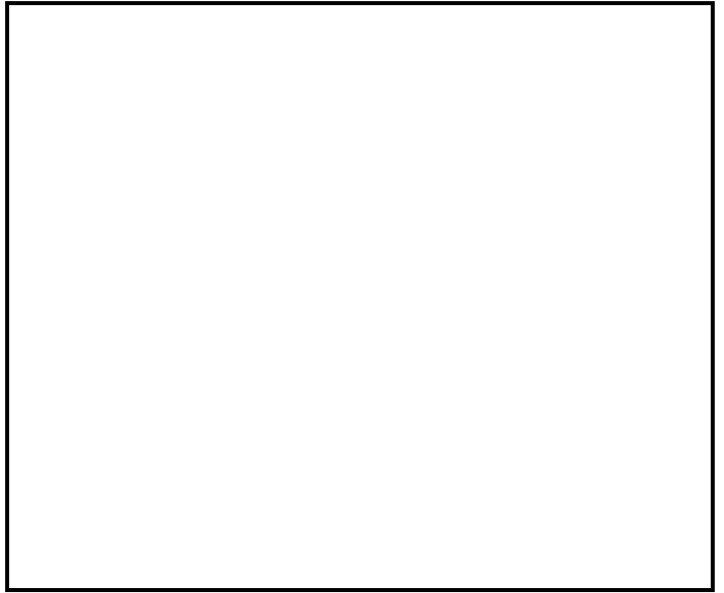
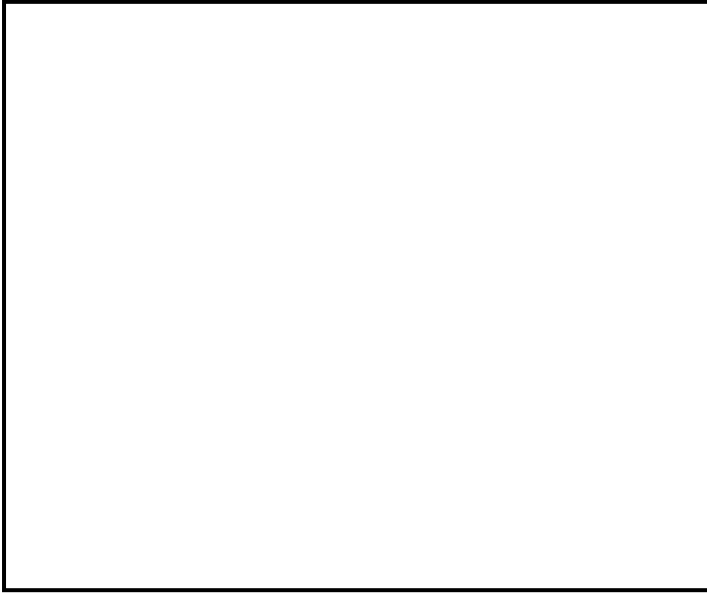


Site Survey
COU Fiber Project
City of Unalaska
Unalaska, Alaska

Date:

PON Location

Cable Routing



Cable Routing Notes



Site Survey
COU Fiber Project
City of Unalaska
Unalaska, Alaska

Date:



PON Location



General Scope

The purpose of this document is to provide a detailed scope of work for installing a fiber optic service drop to a particular City of Unalaska facility.

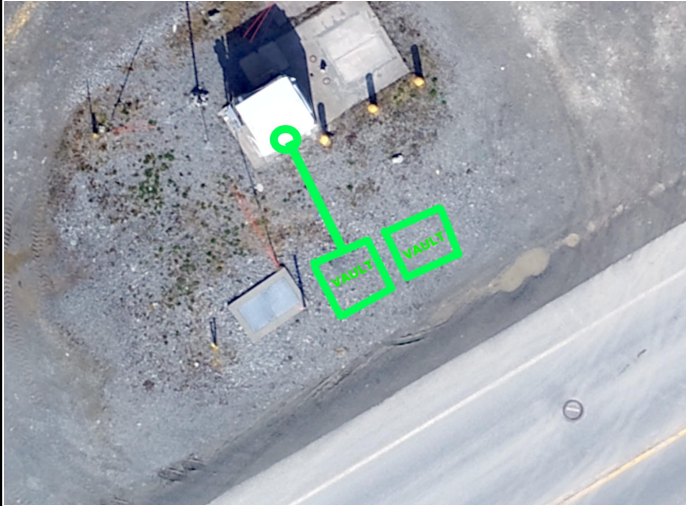
City of Unalaska

Facility Name:

Location of Property



Proposed Cable Path



Legend



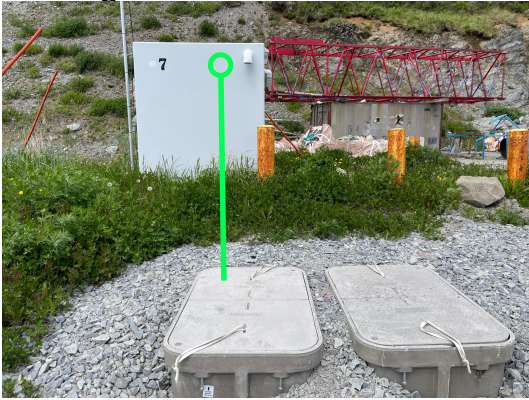
Proposed cable route



Locate Information

Utility locates are required at each site for any necessary underground trenching. A site meet will be required for the City of Unalaska to identify the location and depth of all fuel lines, pipes, conduits or cables placed by the owner in or near the trench path.

Building Penetration Point



Comm Room Access



Installation Notes



Site Survey
COU Fiber Project
City of Unalaska
Unalaska, Alaska

Date:

PON Location

Cable Routing

Cable Routing Notes



Site Survey
COU Fiber Project
City of Unalaska
Unalaska, Alaska

Date:

PON Location

General Scope

The purpose of this document is to provide a detailed scope of work for installing a fiber optic service drop to a particular City of Unalaska facility.

City of Unalaska

Facility Name:

Location of Property



Proposed Cable Path



Legend



Proposed cable route



Locate Information

Utility locates are required at each site for any necessary underground trenching. A site meet will be required for the City of Unalaska to identify the location and depth of all fuel lines, pipes, conduits or cables placed by the owner in or near the trench path.

Building Penetration Point



Comm Room Access



Installation Notes



Site Survey
COU Fiber Project
City of Unalaska
Unalaska, Alaska

Date:

PON Location

Cable Routing

Cable Routing Notes



Site Survey
COU Fiber Project
City of Unalaska
Unalaska, Alaska

Date:

PON Location

General Scope

The purpose of this document is to provide a detailed scope of work for installing a fiber optic service drop to a particular City of Unalaska facility.

City of Unalaska

Facility Name:

Location of Property



Locate Information

Utility locates are required at each site for any necessary underground trenching. A site meet will be required for the City of Unalaska to identify the location and depth of all fuel lines, pipes, conduits or cables placed by the owner in or near the trench path.

Proposed Cable Path



Legend



Proposed cable route



Building Penetration Point



Comm Room Access



Installation Notes

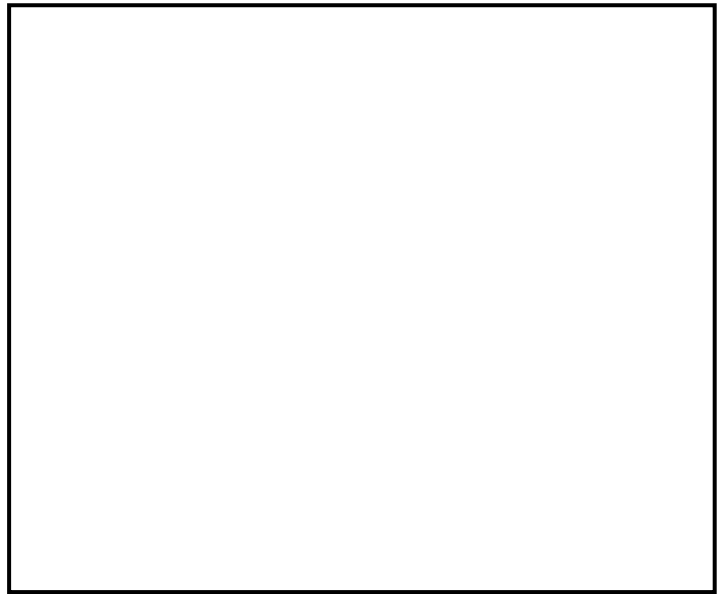
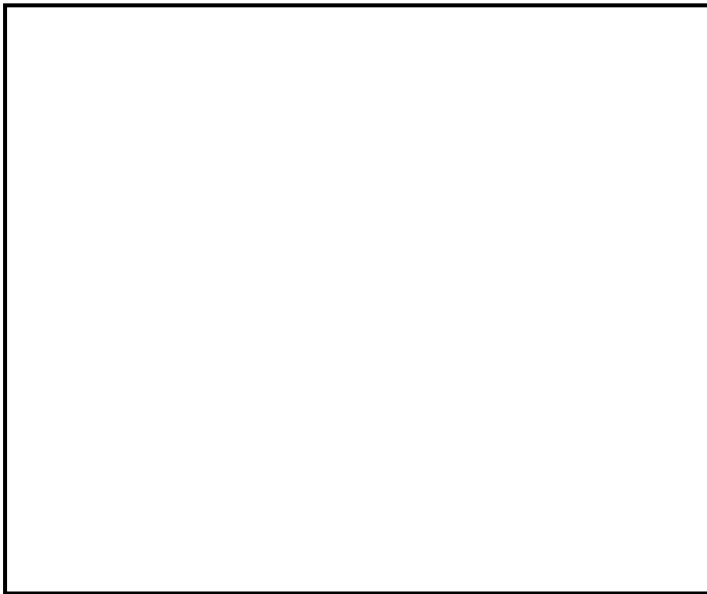
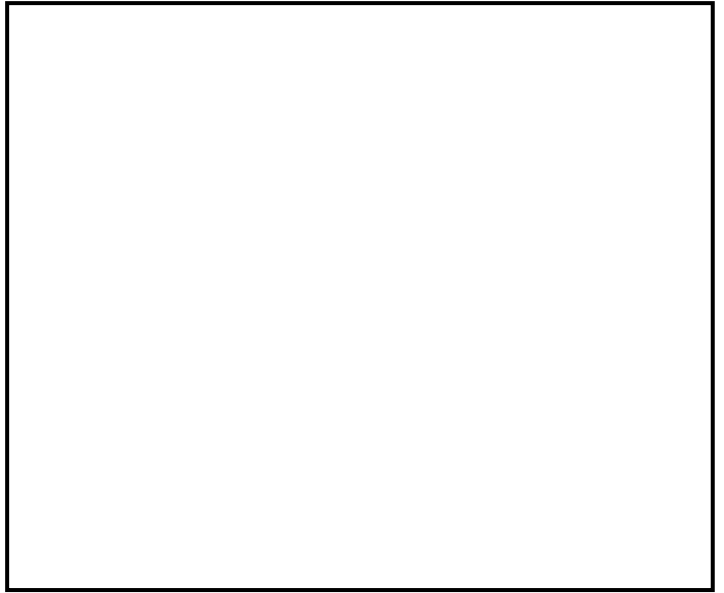
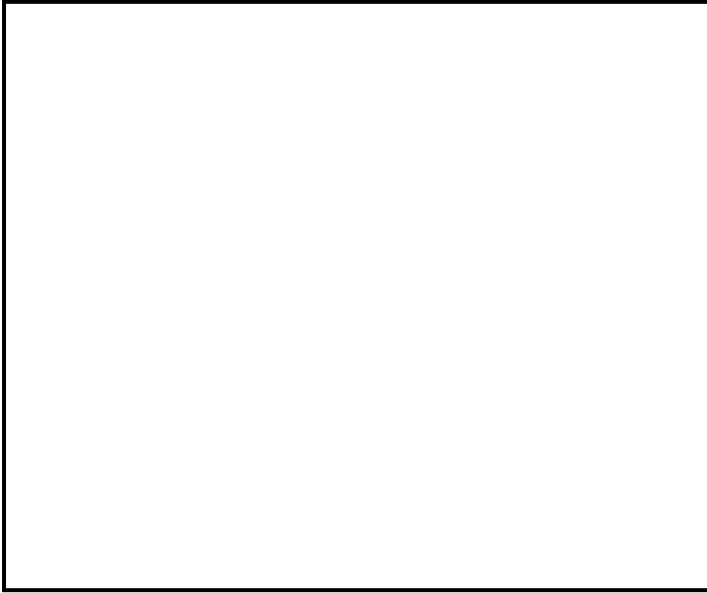


Site Survey
COU Fiber Project
City of Unalaska
Unalaska, Alaska

Date:

PON Location

Cable Routing



Cable Routing Notes



Site Survey
COU Fiber Project
City of Unalaska
Unalaska, Alaska

Date:



PON Location



General Scope

The purpose of this document is to provide a detailed scope of work for installing a fiber optic service drop to a particular City of Unalaska facility.

City of Unalaska

Facility Name:

Location of Property



Proposed Cable Path



Legend



Proposed cable route



Locate Information

Utility locates are required at each site for any necessary underground trenching. A site meet will be required for the City of Unalaska to identify the location and depth of all fuel lines, pipes, conduits or cables placed by the owner in or near the trench path.

Building Penetration Point



Comm Room Access

Installation Notes

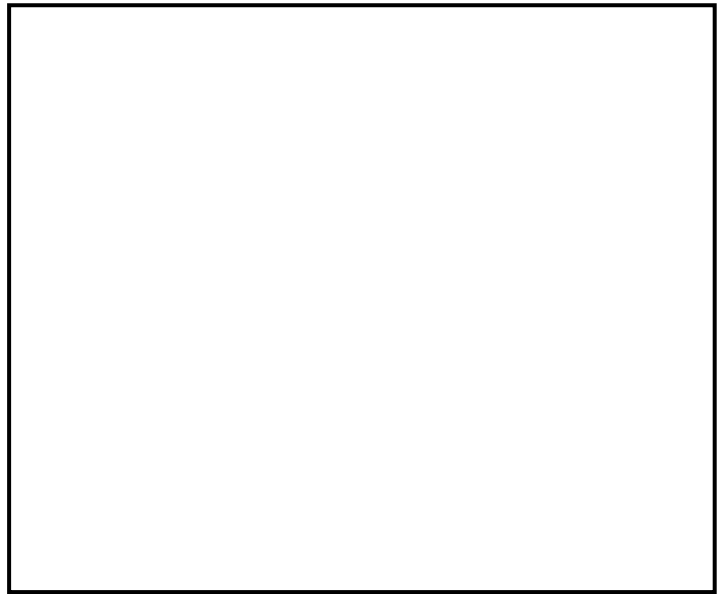
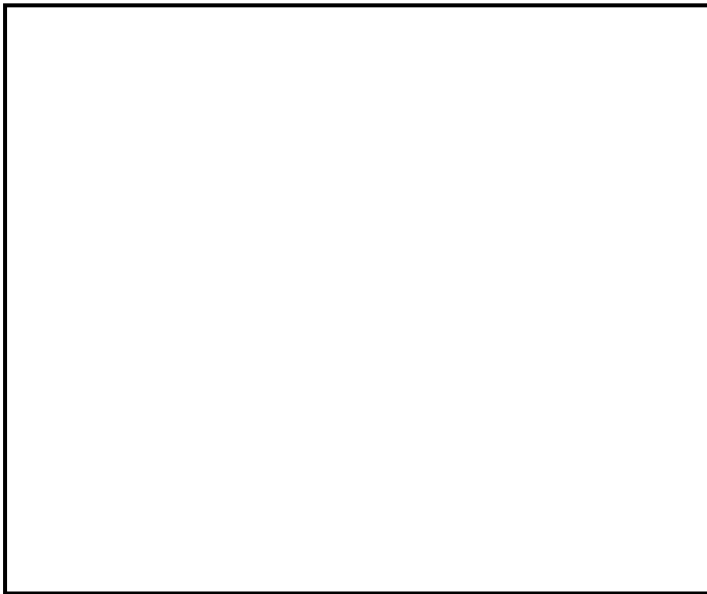
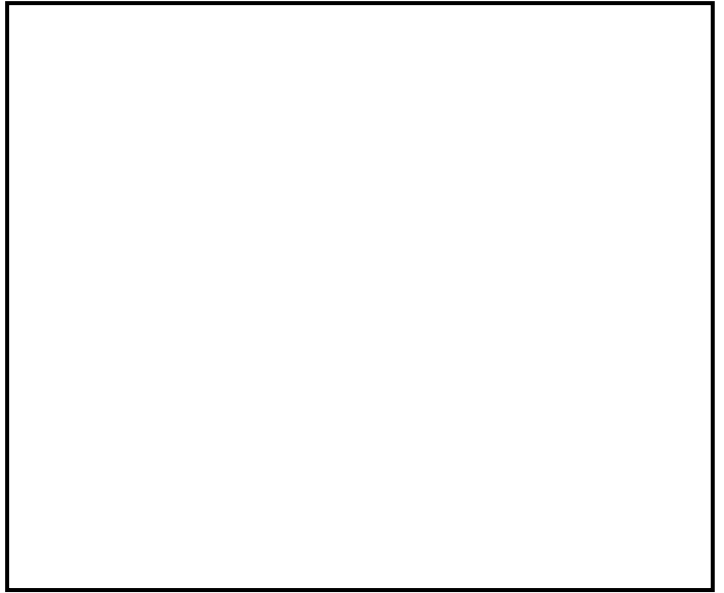
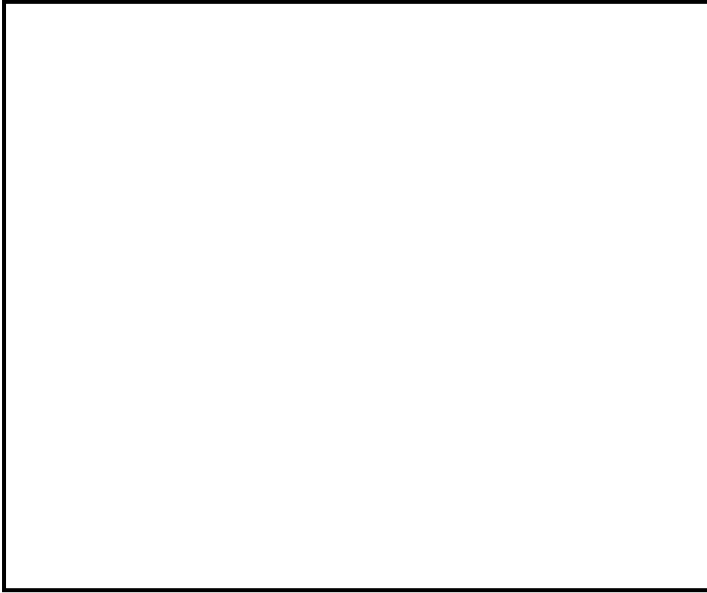


Site Survey
COU Fiber Project
City of Unalaska
Unalaska, Alaska

Date:

PON Location

Cable Routing



Cable Routing Notes



Site Survey
COU Fiber Project
City of Unalaska
Unalaska, Alaska

Date:



PON Location



General Scope

The purpose of this document is to provide a detailed scope of work for installing a fiber optic service drop to a particular City of Unalaska facility.

City of Unalaska

Facility Name:

Location of Property



Proposed Cable Path



Legend



Proposed cable route



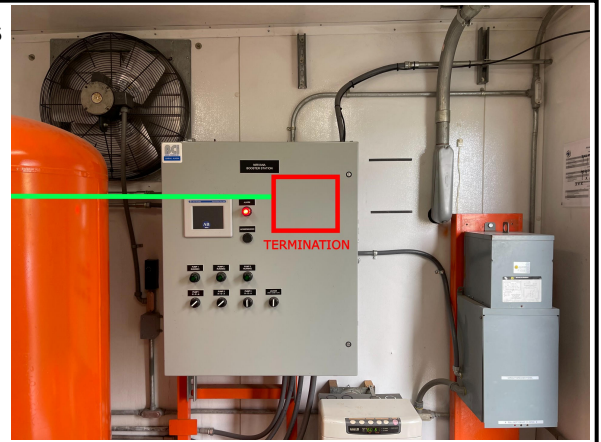
Locate Information

Utility locates are required at each site for any necessary underground trenching. A site meet will be required for the City of Unalaska to identify the location and depth of all fuel lines, pipes, conduits or cables placed by the owner in or near the trench path.

Building Penetration Point



Comm Room Access



Installation Notes

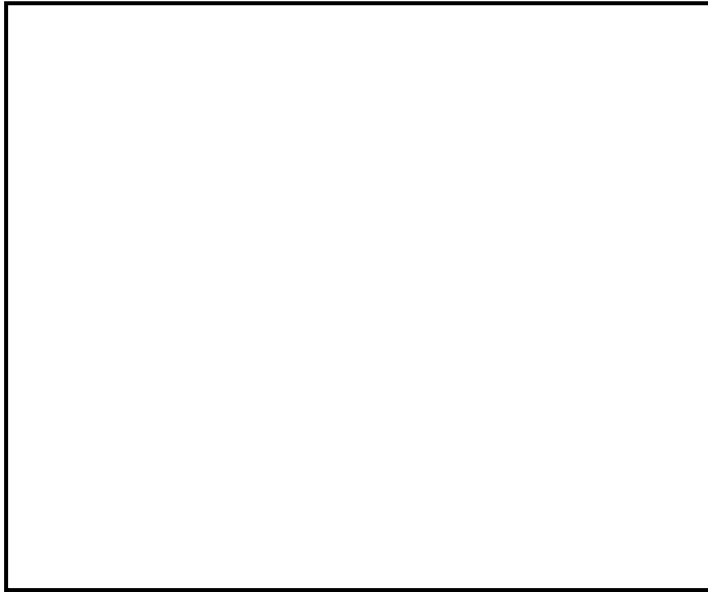
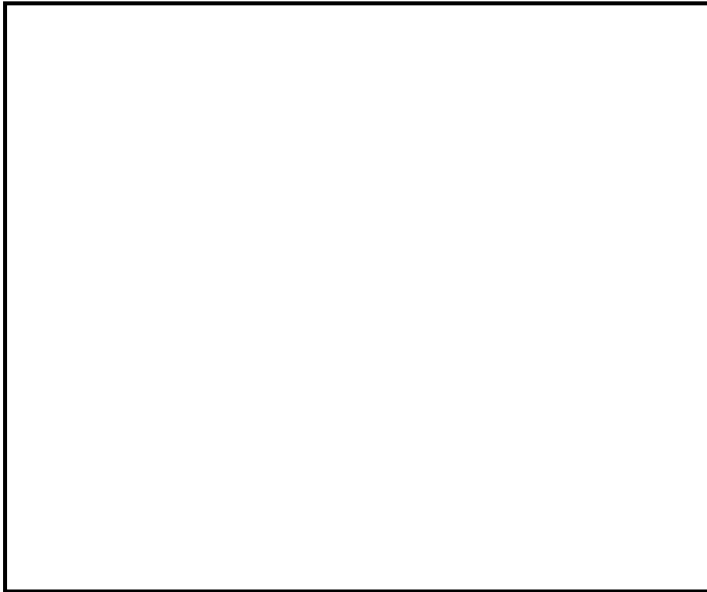
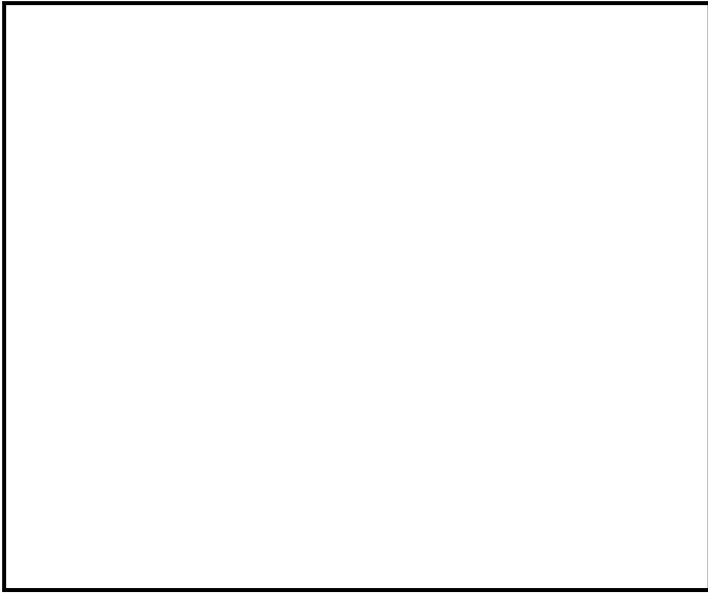


Site Survey
COU Fiber Project
City of Unalaska
Unalaska, Alaska

Date:

PON Location

Cable Routing



Cable Routing Notes



Site Survey
COU Fiber Project
City of Unalaska
Unalaska, Alaska

Date:

PON Location

General Scope

The purpose of this document is to provide a detailed scope of work for installing a fiber optic service drop to a particular City of Unalaska facility.

City of Unalaska

Facility Name:

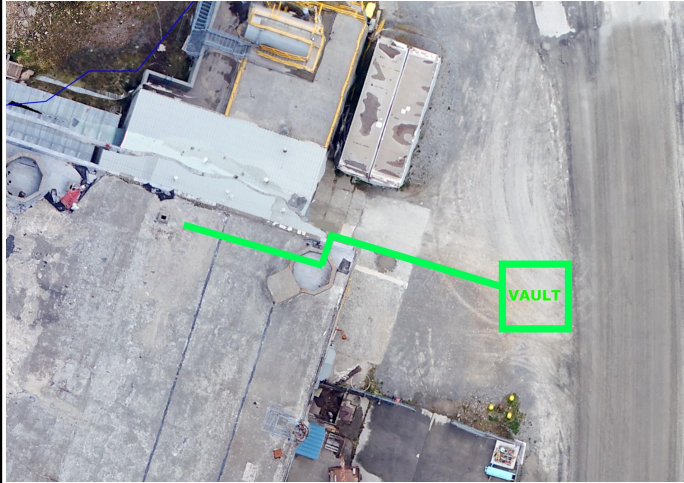
Location of Property



Locate Information

Utility locates are required at each site for any necessary underground trenching. A site meet will be required for the City of Unalaska to identify the location and depth of all fuel lines, pipes, conduits or cables placed by the owner in or near the trench path.

Proposed Cable Path



Legend



Proposed cable route



Building Penetration Point



Comm Room Access



Installation Notes

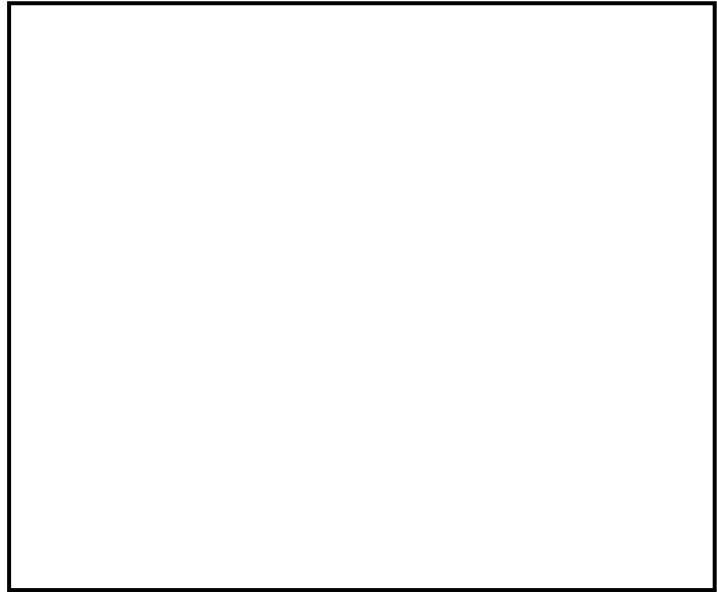
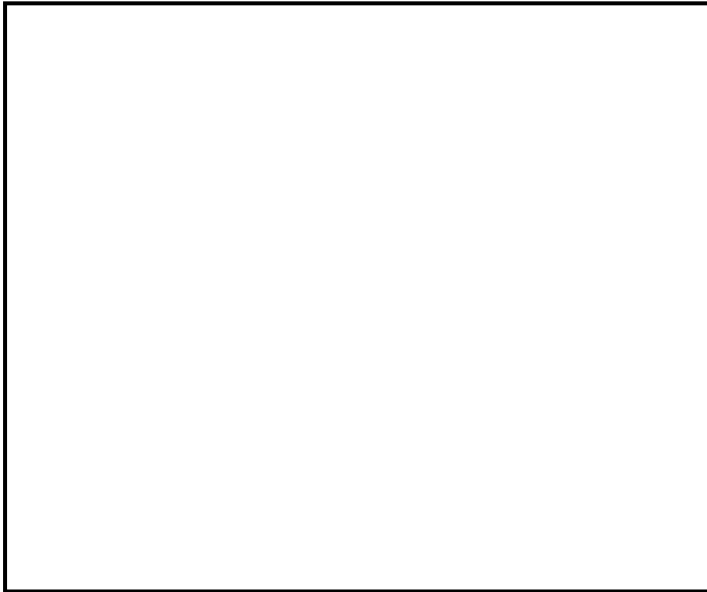
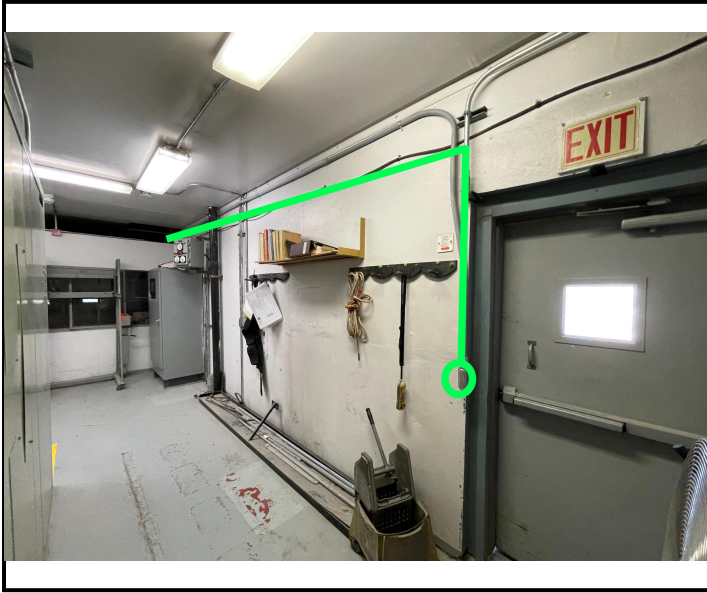


Site Survey
COU Fiber Project
City of Unalaska
Unalaska, Alaska

Date:

PON Location

Cable Routing



Cable Routing Notes



Site Survey
COU Fiber Project
City of Unalaska
Unalaska, Alaska

Date:

PON Location

General Scope

The purpose of this document is to provide a detailed scope of work for installing a fiber optic service drop to a particular City of Unalaska facility.

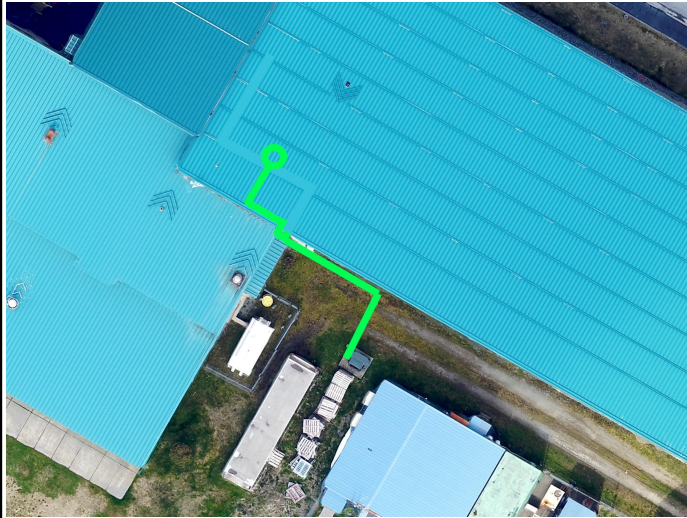
City of Unalaska

Facility Name:

Location of Property



Proposed Cable Path



Legend



Proposed cable route



Locate Information

Utility locates are required at each site for any necessary underground trenching. A site meet will be required for the City of Unalaska to identify the location and depth of all fuel lines, pipes, conduits or cables placed by the owner in or near the trench path.

Building Penetration Point



Comm Room Access



Installation Notes

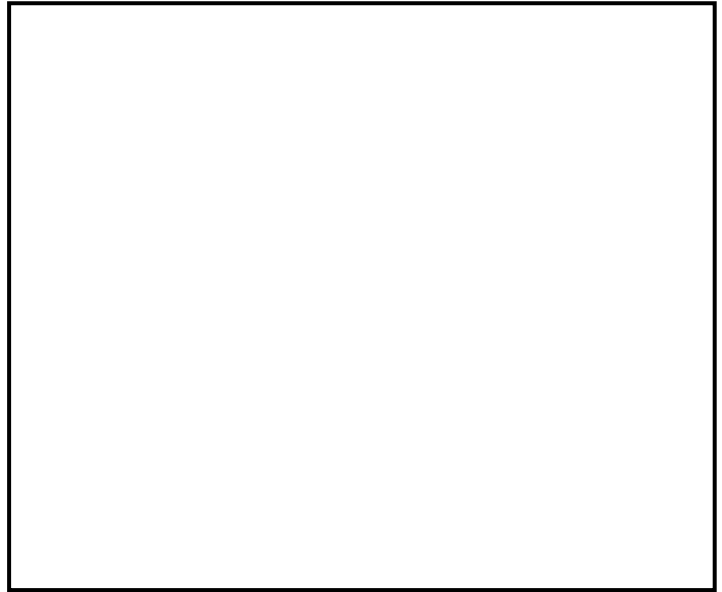
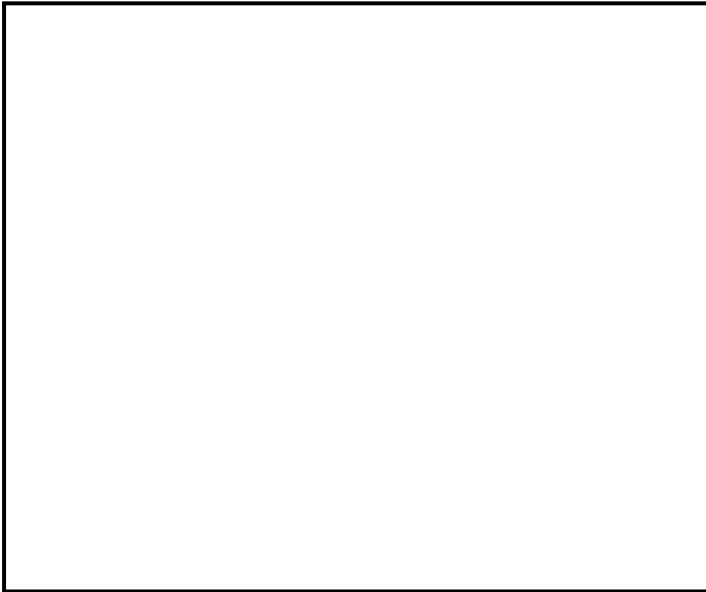
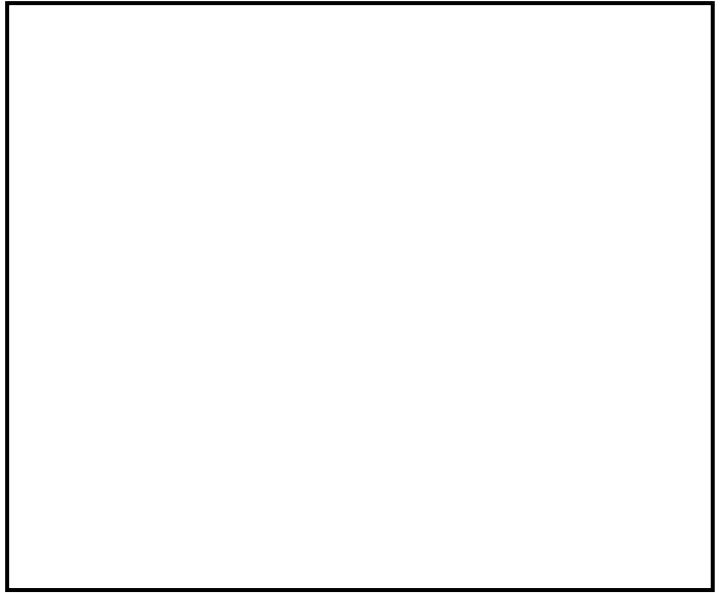
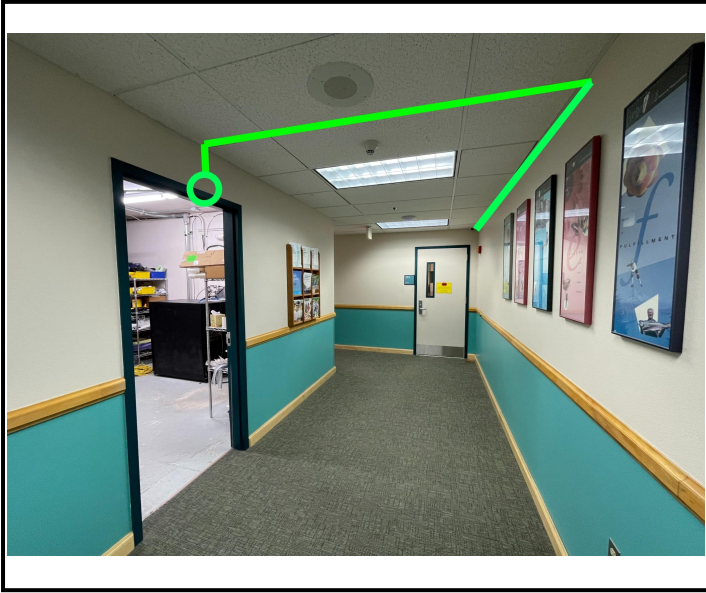


Site Survey
COU Fiber Project
City of Unalaska
Unalaska, Alaska

Date:

PON Location

Cable Routing



Cable Routing Notes



Site Survey
COU Fiber Project
City of Unalaska
Unalaska, Alaska

Date:

PON Location

General Scope

The purpose of this document is to provide a detailed scope of work for installing a fiber optic service drop to a particular City of Unalaska facility.

City of Unalaska

Facility Name:

Location of Property



Proposed Cable Path



Legend



Proposed cable route



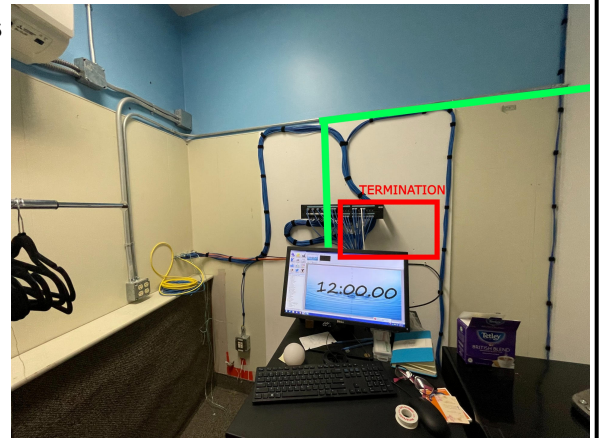
Locate Information

Utility locates are required at each site for any necessary underground trenching. A site meet will be required for the City of Unalaska to identify the location and depth of all fuel lines, pipes, conduits or cables placed by the owner in or near the trench path.

Building Penetration Point



Comm Room Access



Installation Notes

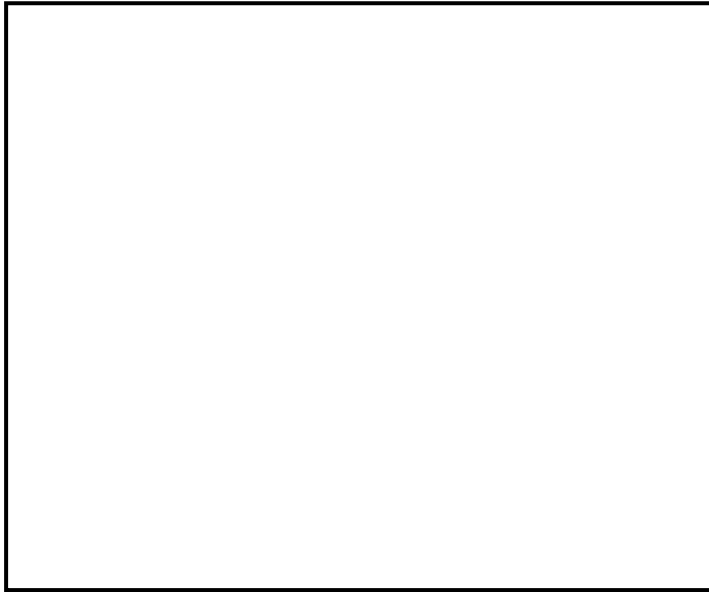
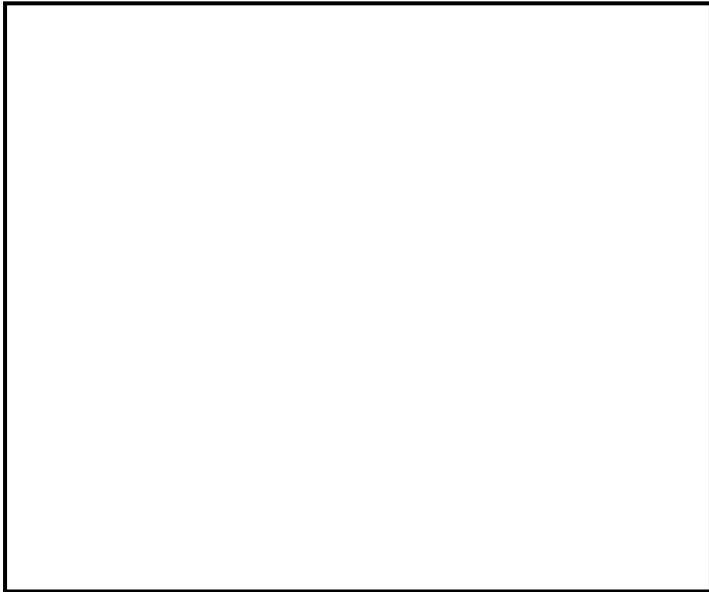
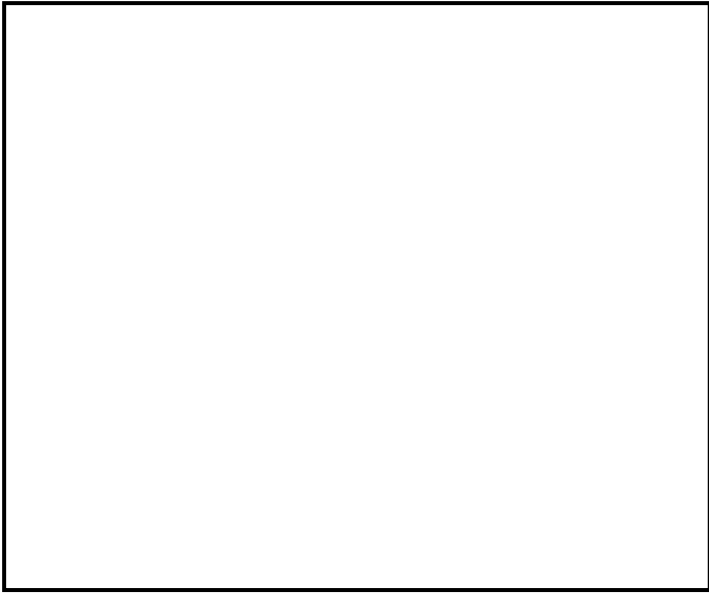
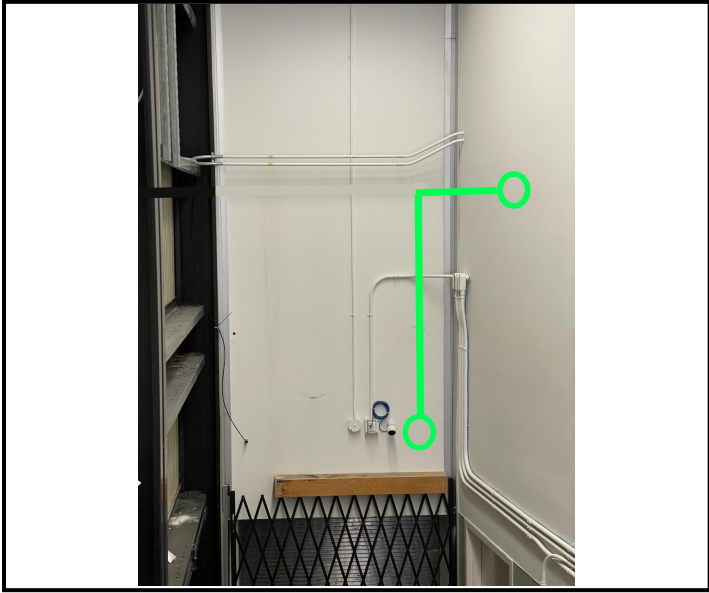


Site Survey
COU Fiber Project
City of Unalaska
Unalaska, Alaska

Date:

PON Location

Cable Routing



Cable Routing Notes



Site Survey
COU Fiber Project
City of Unalaska
Unalaska, Alaska

Date:

PON Location

General Scope

The purpose of this document is to provide a detailed scope of work for installing a fiber optic service drop to a particular City of Unalaska facility.

City of Unalaska

Facility Name:

Location of Property



Proposed Cable Path



Legend



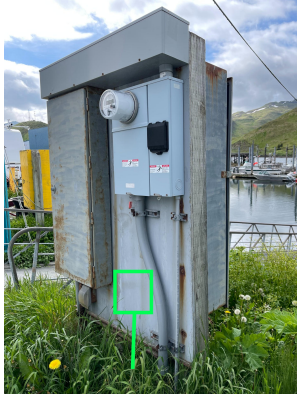
Proposed cable route



Locate Information

Utility locates are required at each site for any necessary underground trenching. A site meet will be required for the City of Unalaska to identify the location and depth of all fuel lines, pipes, conduits or cables placed by the owner in or near the trench path.

Building Penetration Point



Comm Room Access

Installation Notes

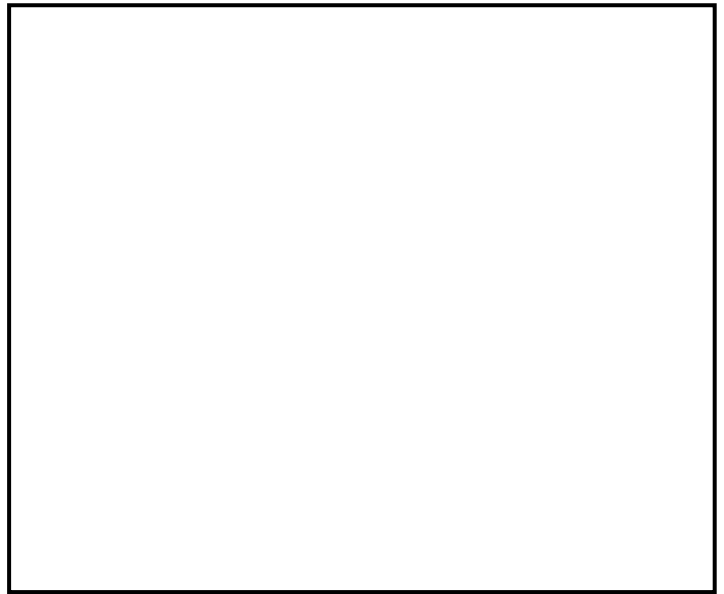
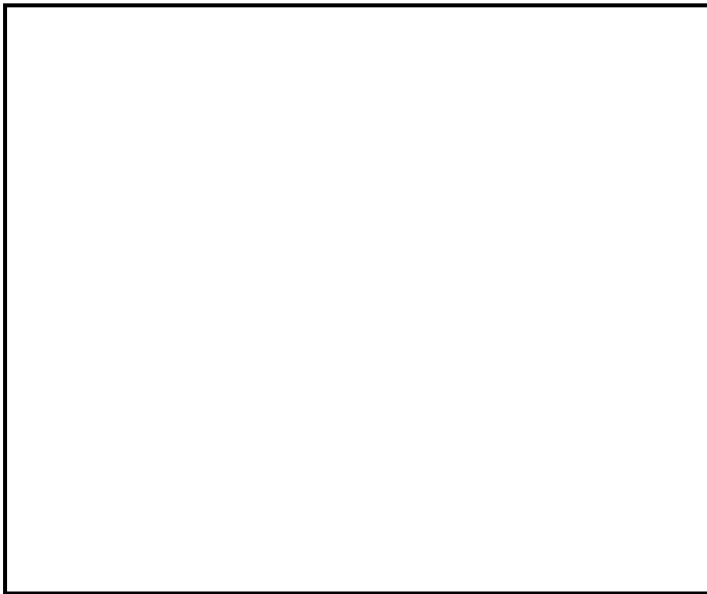
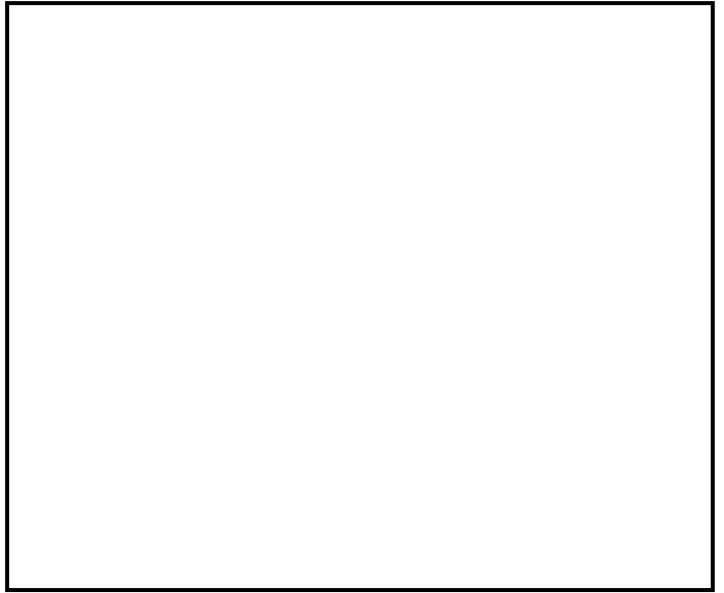
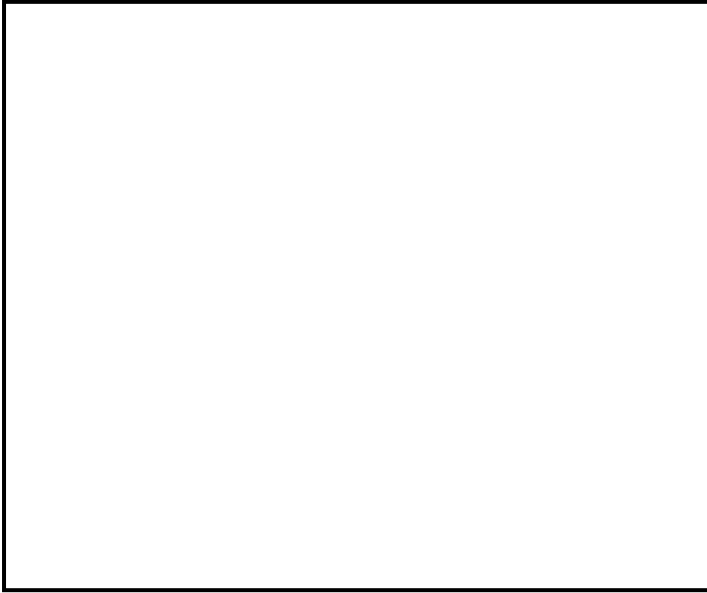


Site Survey
COU Fiber Project
City of Unalaska
Unalaska, Alaska

Date:

PON Location

Cable Routing



Cable Routing Notes



Site Survey
COU Fiber Project
City of Unalaska
Unalaska, Alaska

Date:



PON Location



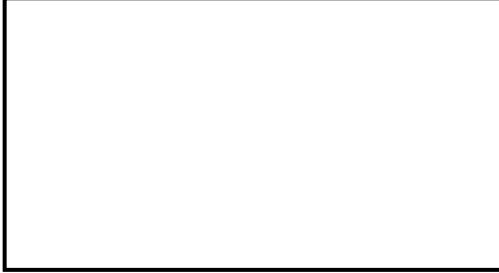
General Scope

The purpose of this document is to provide a detailed scope of work for installing a fiber optic service drop to a particular City of Unalaska facility.

City of Unalaska

Facility Name:

Location of Property



Proposed Cable Path



Legend



Proposed cable route

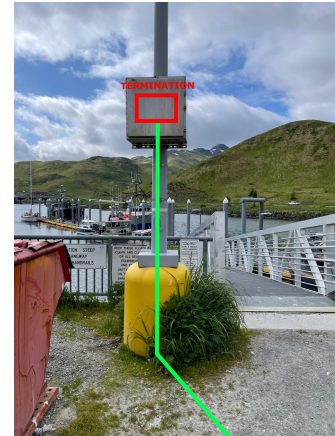


Locate Information

Utility locates are required at each site for any necessary underground trenching. A site meet will be required for the City of Unalaska to identify the location and depth of all fuel lines, pipes, conduits or cables placed by the owner in or near the trench path.

Building Penetration Point

Comm Room Access



Installation Notes

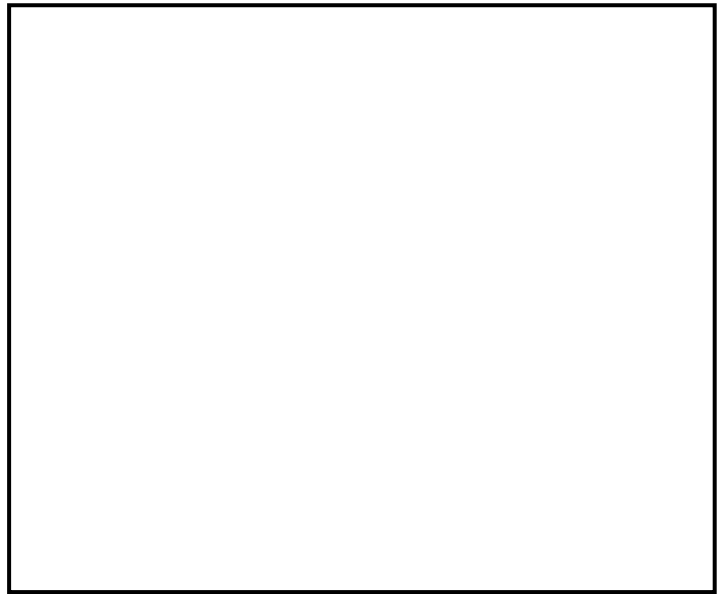
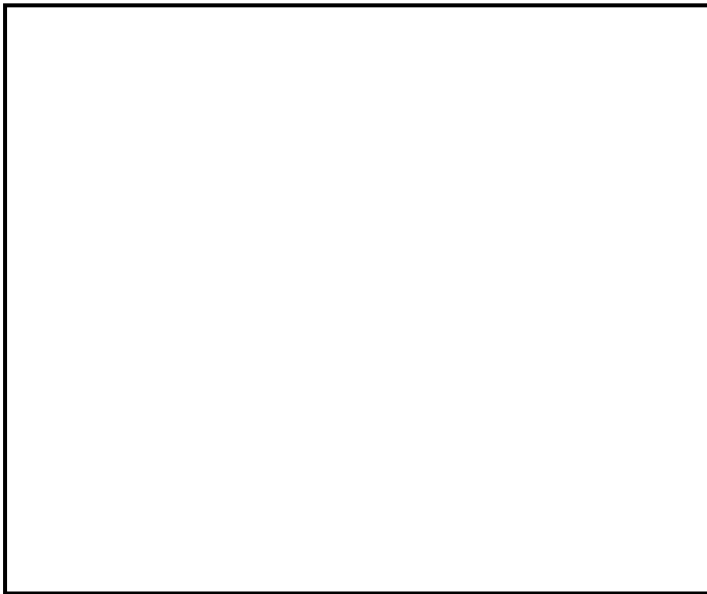
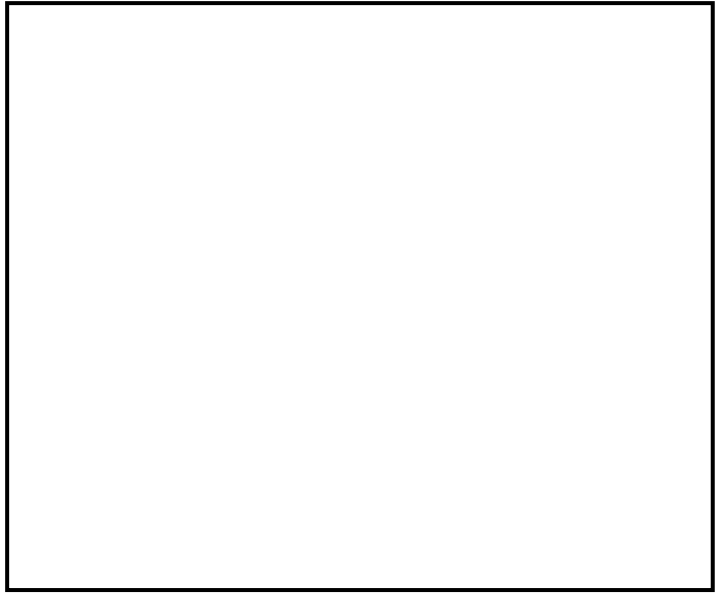
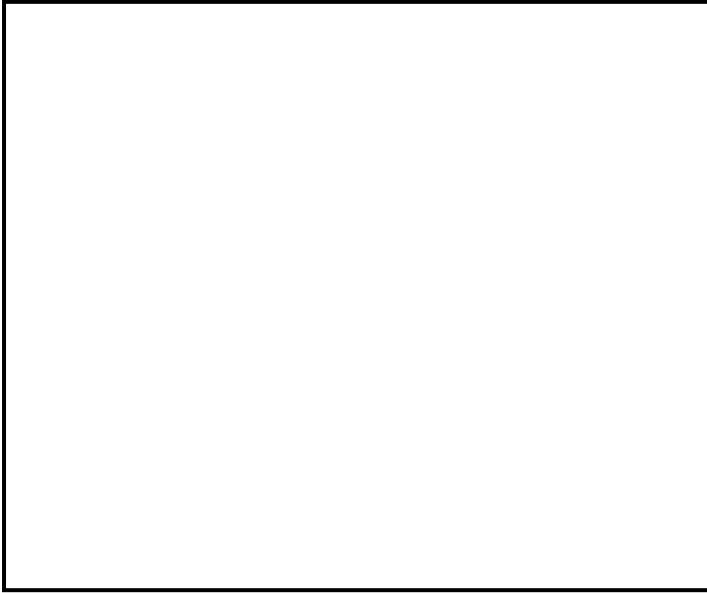


Site Survey
COU Fiber Project
City of Unalaska
Unalaska, Alaska

Date:

PON Location

Cable Routing



Cable Routing Notes



Site Survey
COU Fiber Project
City of Unalaska
Unalaska, Alaska

Date:



PON Location



General Scope

The purpose of this document is to provide a detailed scope of work for installing a fiber optic service drop to a particular City of Unalaska facility.

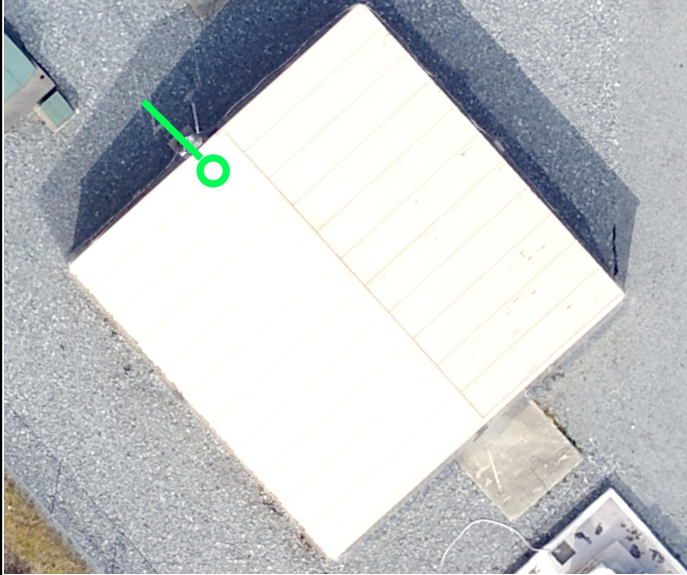
City of Unalaska

Facility Name:

Location of Property



Proposed Cable Path



Legend



Proposed cable route



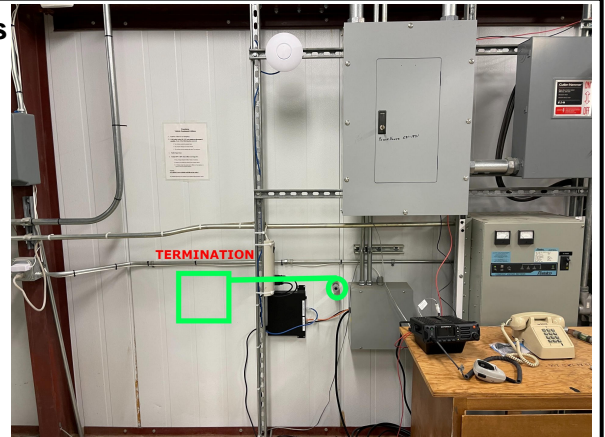
Locate Information

Utility locates are required at each site for any necessary underground trenching. A site meet will be required for the City of Unalaska to identify the location and depth of all fuel lines, pipes, conduits or cables placed by the owner in or near the trench path.

Building Penetration Point



Comm Room Access



Installation Notes

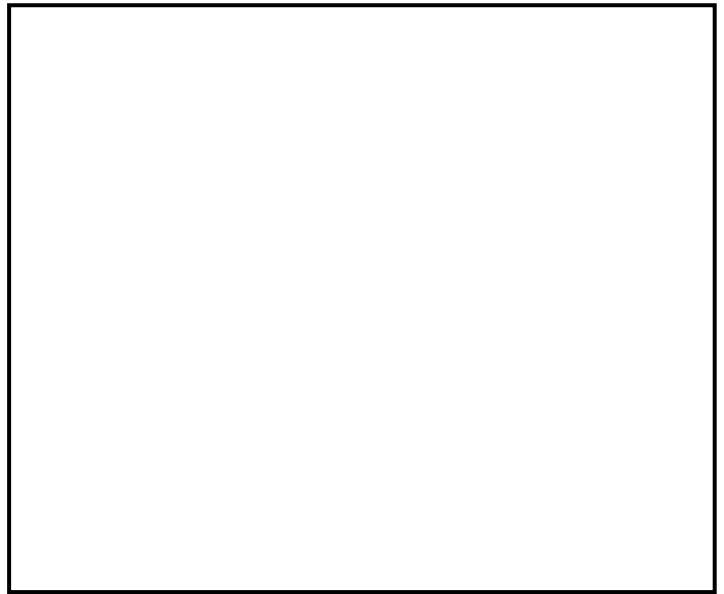
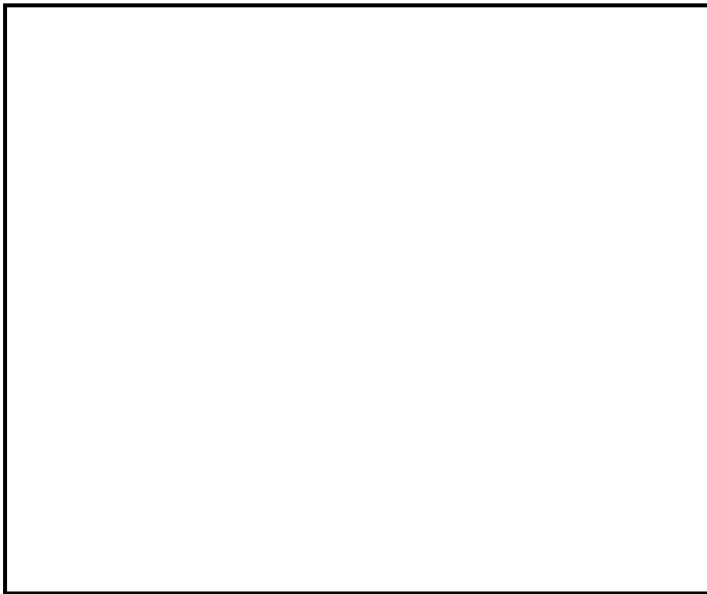
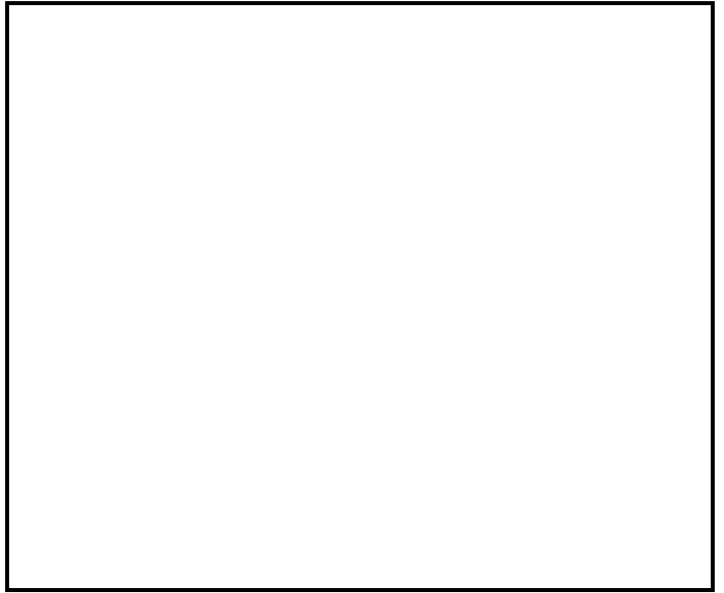
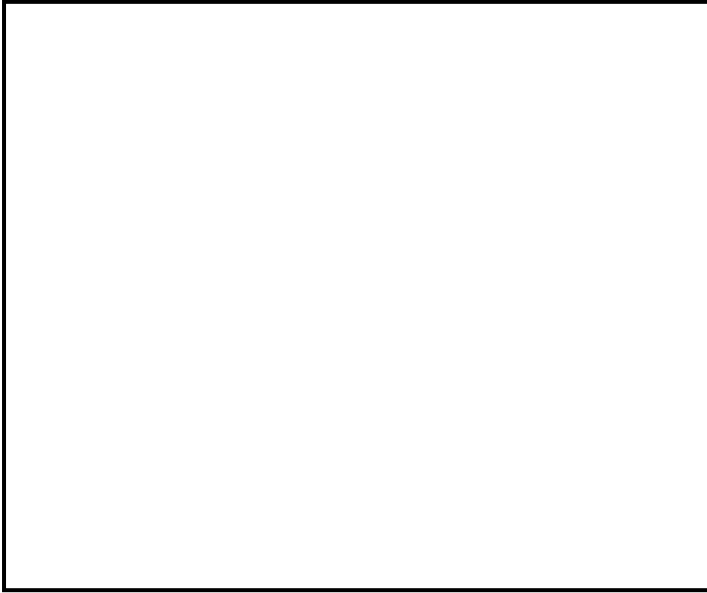


Site Survey
COU Fiber Project
City of Unalaska
Unalaska, Alaska

Date:

PON Location

Cable Routing




Cable Routing Notes



Site Survey
COU Fiber Project
City of Unalaska
Unalaska, Alaska

Date:



PON Location



General Scope

The purpose of this document is to provide a detailed scope of work for installing a fiber optic service drop to a particular City of Unalaska facility.

City of Unalaska

Facility Name:

Location of Property



Proposed Cable Path



Legend



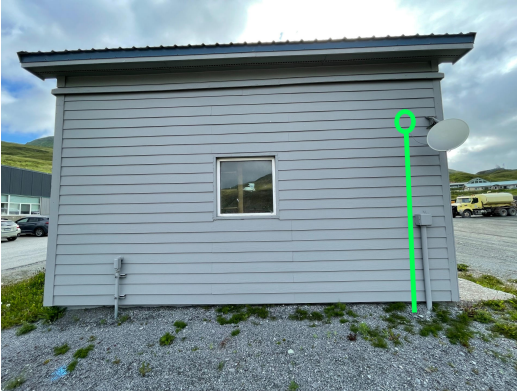
Proposed cable route



Locate Information

Utility locates are required at each site for any necessary underground trenching. A site meet will be required for the City of Unalaska to identify the location and depth of all fuel lines, pipes, conduits or cables placed by the owner in or near the trench path.

Building Penetration Point



Comm Room Access



Installation Notes

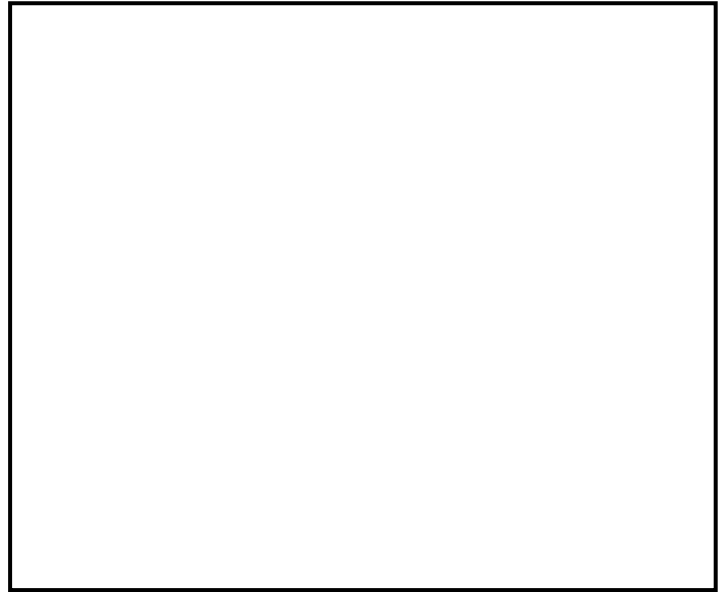
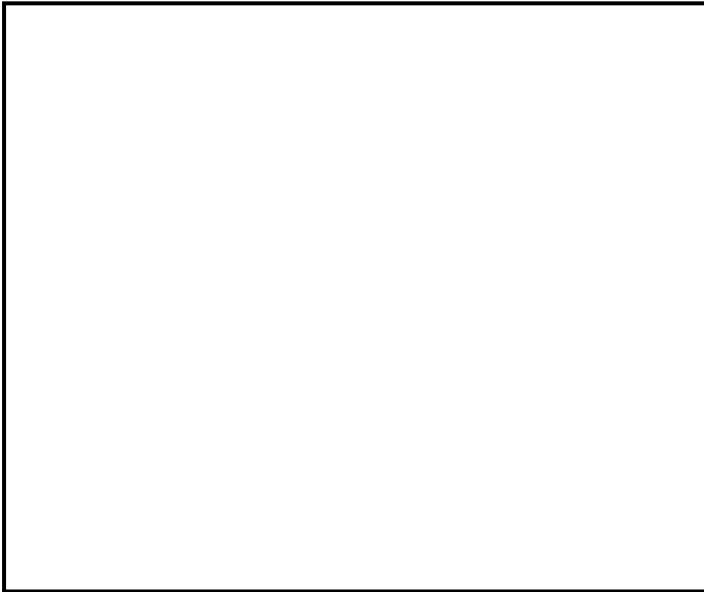
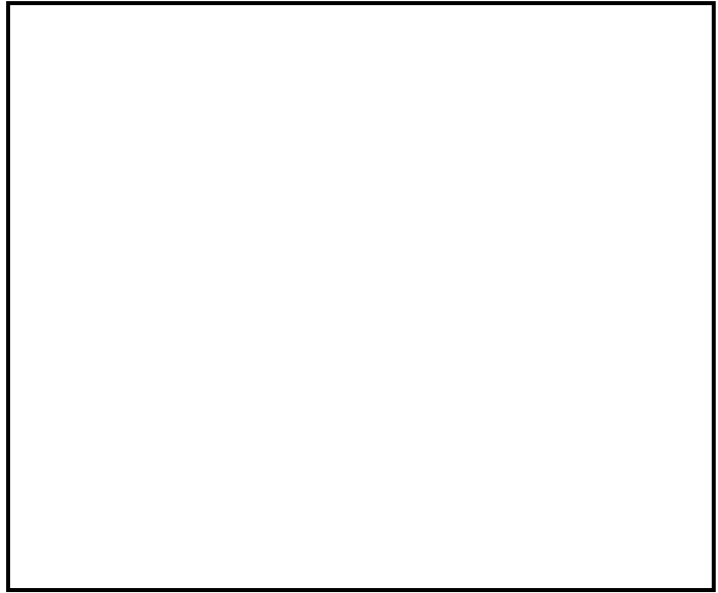


Site Survey
COU Fiber Project
City of Unalaska
Unalaska, Alaska

Date:

PON Location

Cable Routing



Cable Routing Notes



Site Survey
COU Fiber Project
City of Unalaska
Unalaska, Alaska

Date:

PON Location

General Scope

The purpose of this document is to provide a detailed scope of work for installing a fiber optic service drop to a particular City of Unalaska facility.

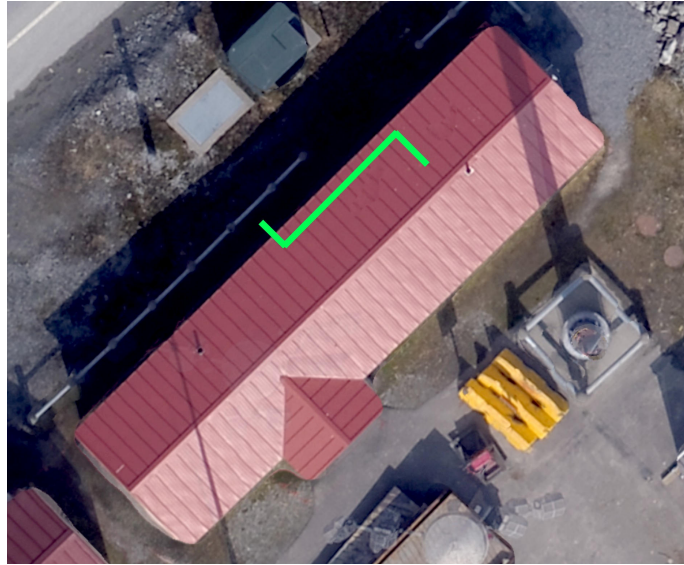
City of Unalaska

Facility Name:

Location of Property



Proposed Cable Path



Legend



Proposed cable route



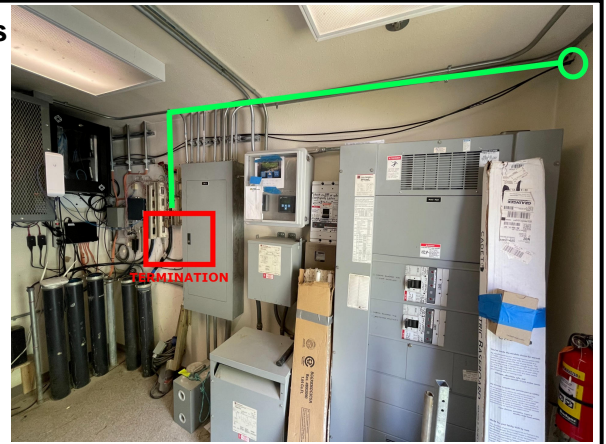
Locate Information

Utility locates are required at each site for any necessary underground trenching. A site meet will be required for the City of Unalaska to identify the location and depth of all fuel lines, pipes, conduits or cables placed by the owner in or near the trench path.

Building Penetration Point



Comm Room Access



Installation Notes

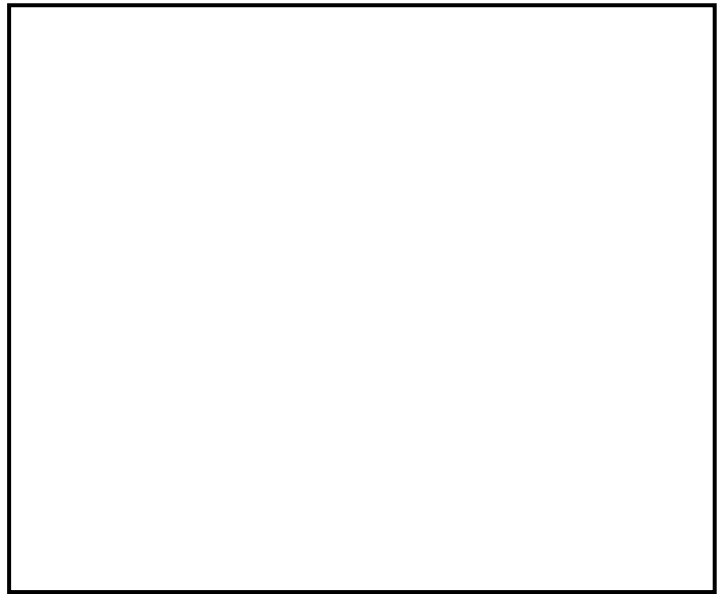
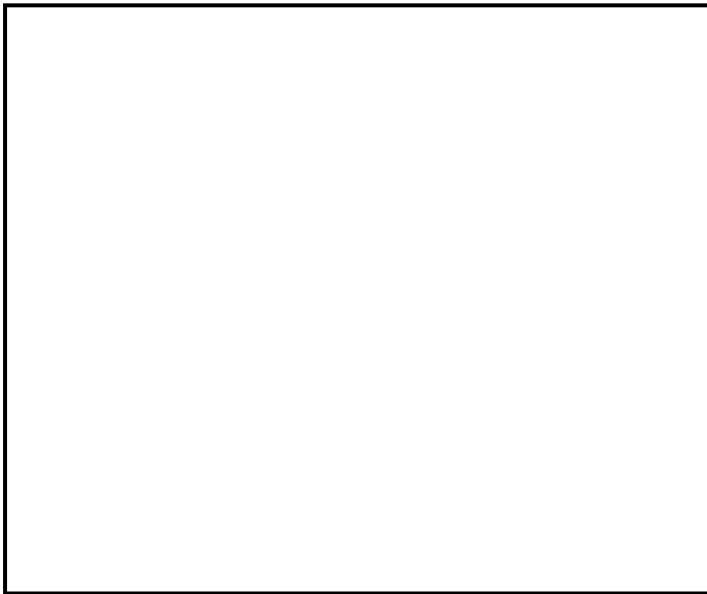
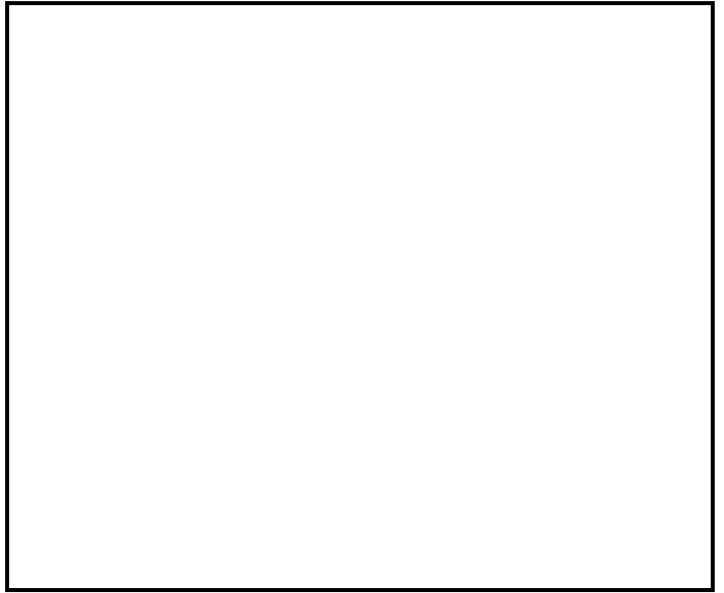
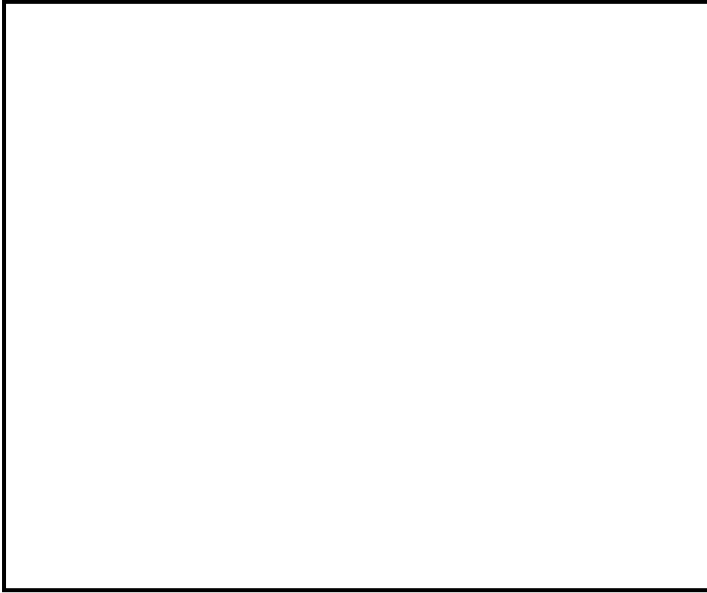


Site Survey
COU Fiber Project
City of Unalaska
Unalaska, Alaska

Date:

PON Location

Cable Routing



Cable Routing Notes



Site Survey
COU Fiber Project
City of Unalaska
Unalaska, Alaska

Date:



PON Location



General Scope

The purpose of this document is to provide a detailed scope of work for installing a fiber optic service drop to a particular City of Unalaska facility.

City of Unalaska

Facility Name:

Location of Property



Proposed Cable Path



Legend



Proposed cable route



Locate Information

Utility locates are required at each site for any necessary underground trenching. A site meet will be required for the City of Unalaska to identify the location and depth of all fuel lines, pipes, conduits or cables placed by the owner in or near the trench path.

Building Penetration Point



Comm Room Access

Installation Notes

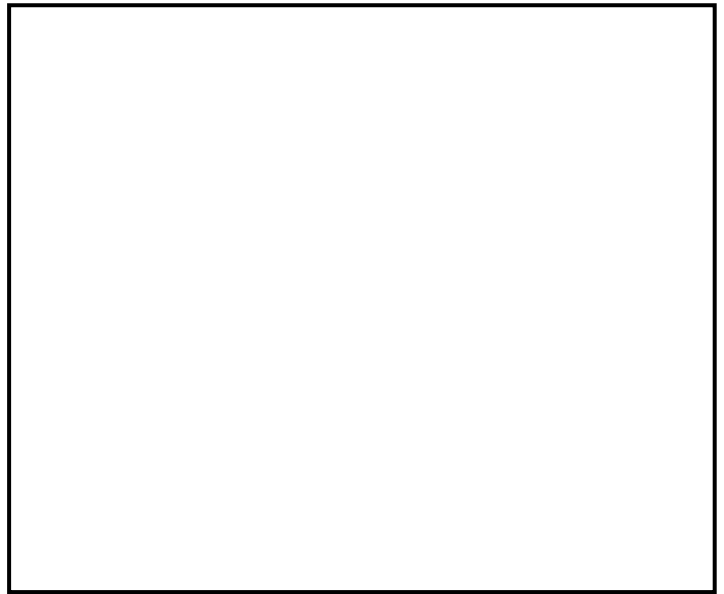
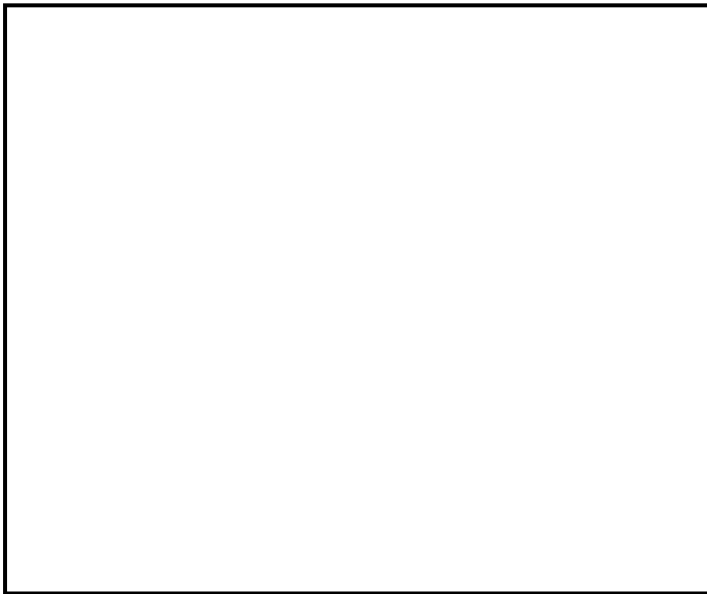
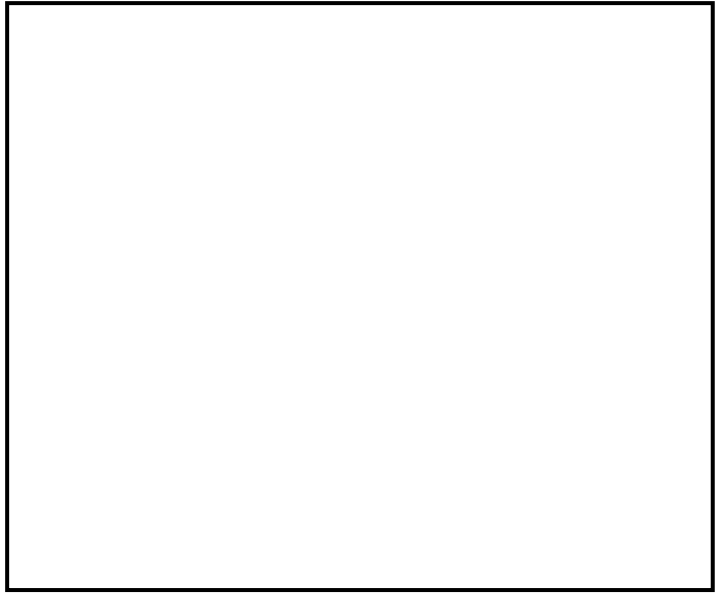
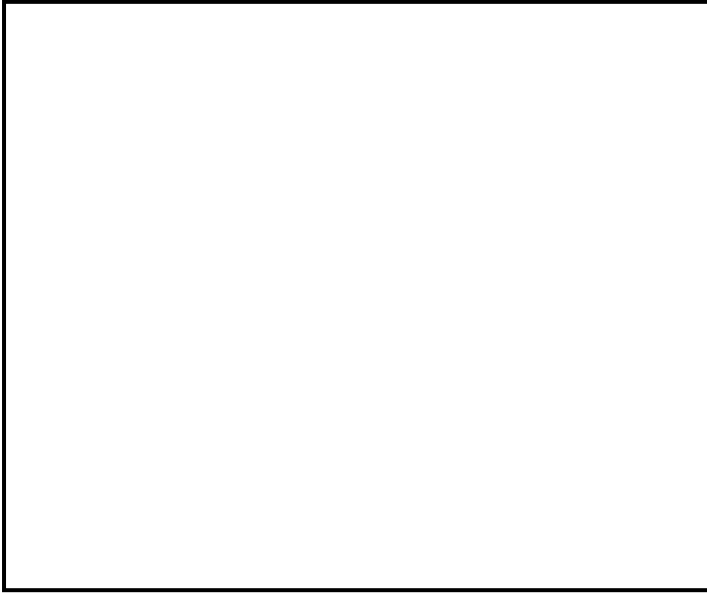


Site Survey
COU Fiber Project
City of Unalaska
Unalaska, Alaska

Date:

PON Location

Cable Routing




Cable Routing Notes



Site Survey
COU Fiber Project
City of Unalaska
Unalaska, Alaska

Date:



PON Location



General Scope

The purpose of this document is to provide a detailed scope of work for installing a fiber optic service drop to a particular City of Unalaska facility.

City of Unalaska

Facility Name:

Location of Property



Proposed Cable Path



Legend



Proposed cable route



Locate Information

Utility locates are required at each site for any necessary underground trenching. A site meet will be required for the City of Unalaska to identify the location and depth of all fuel lines, pipes, conduits or cables placed by the owner in or near the trench path.

Building Penetration Point



Comm Room Access

Installation Notes

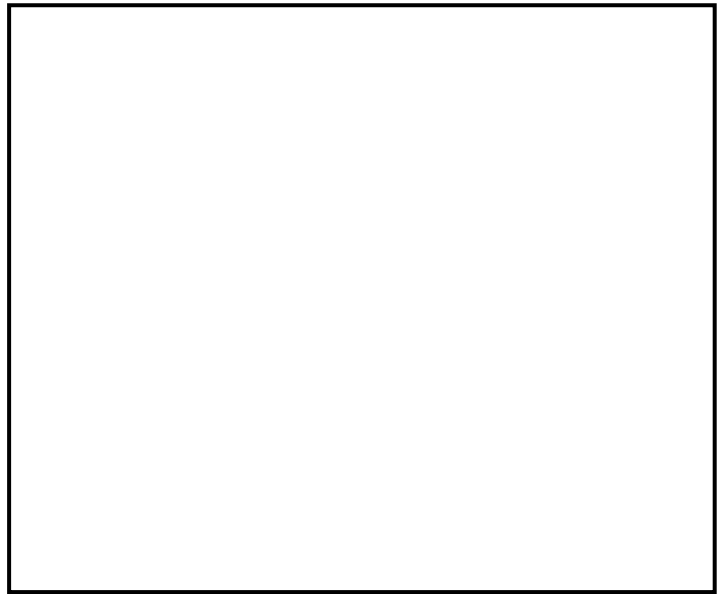
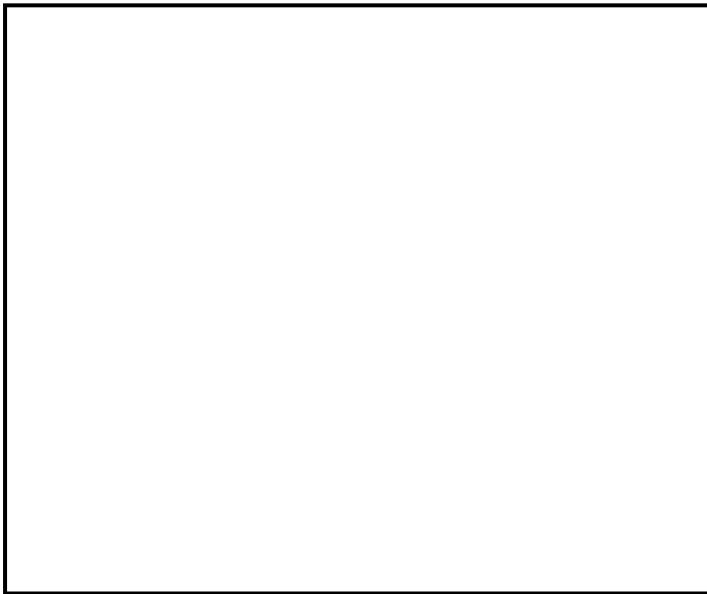
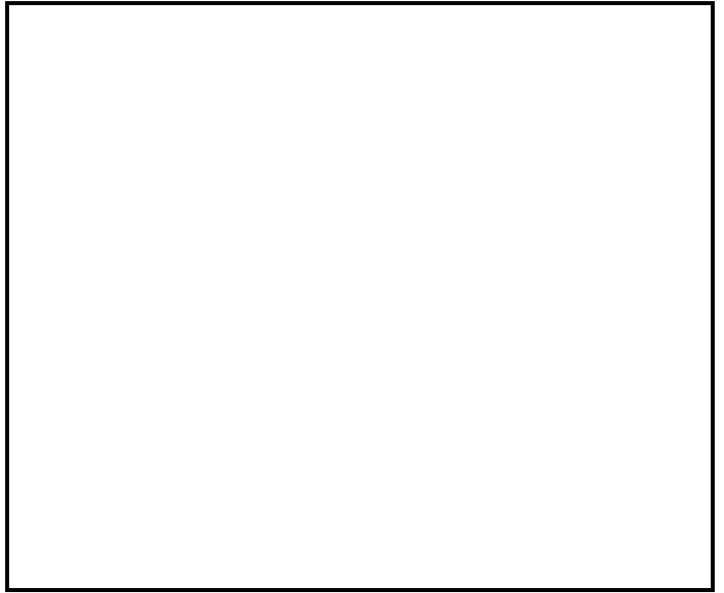
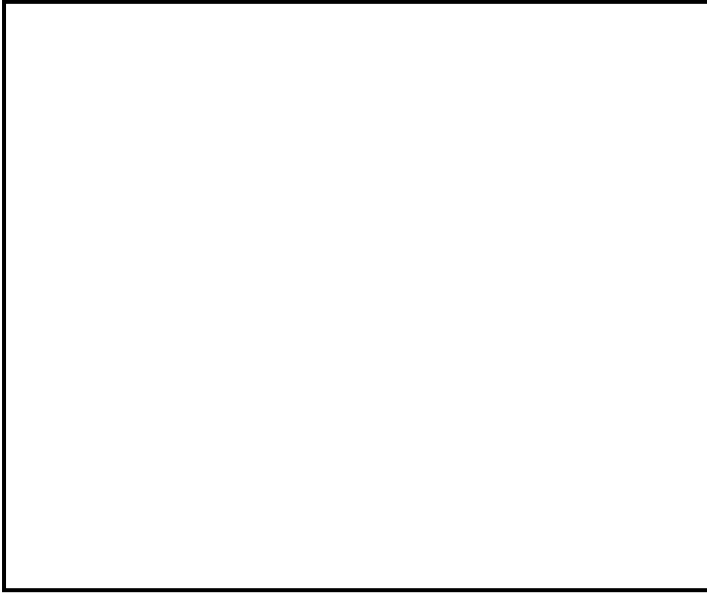


Site Survey
COU Fiber Project
City of Unalaska
Unalaska, Alaska

Date:

PON Location

Cable Routing



Cable Routing Notes



Site Survey
COU Fiber Project
City of Unalaska
Unalaska, Alaska

Date:



PON Location



General Scope

The purpose of this document is to provide a detailed scope of work for installing a fiber optic service drop to a particular City of Unalaska facility.

City of Unalaska

Facility Name:

Location of Property



Proposed Cable Path



Legend



Proposed cable route



Locate Information

Utility locates are required at each site for any necessary underground trenching. A site meet will be required for the City of Unalaska to identify the location and depth of all fuel lines, pipes, conduits or cables placed by the owner in or near the trench path.

Building Penetration Point



Comm Room Access

Installation Notes

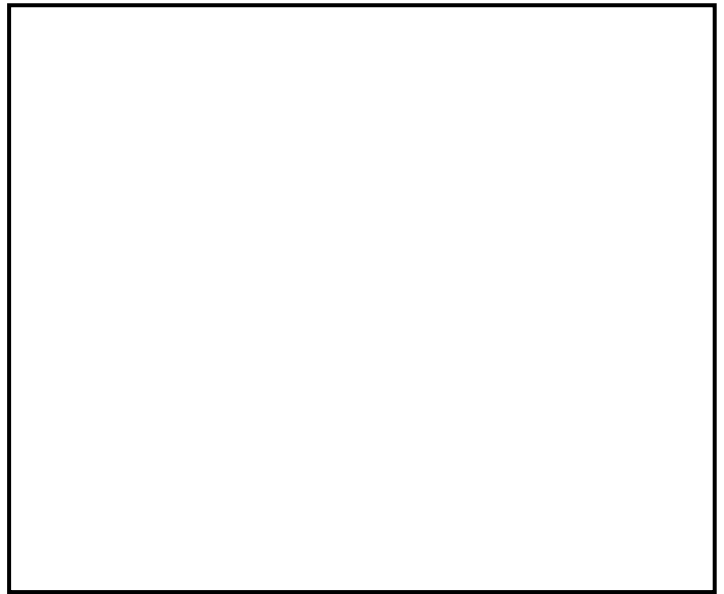
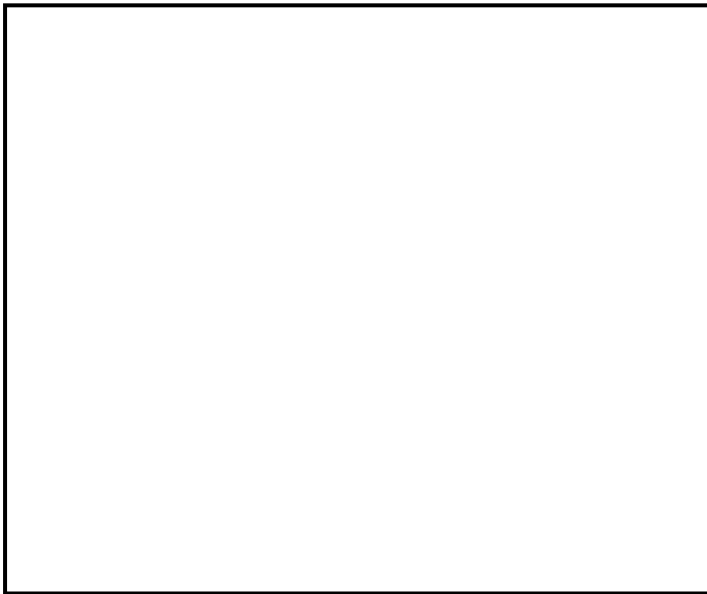
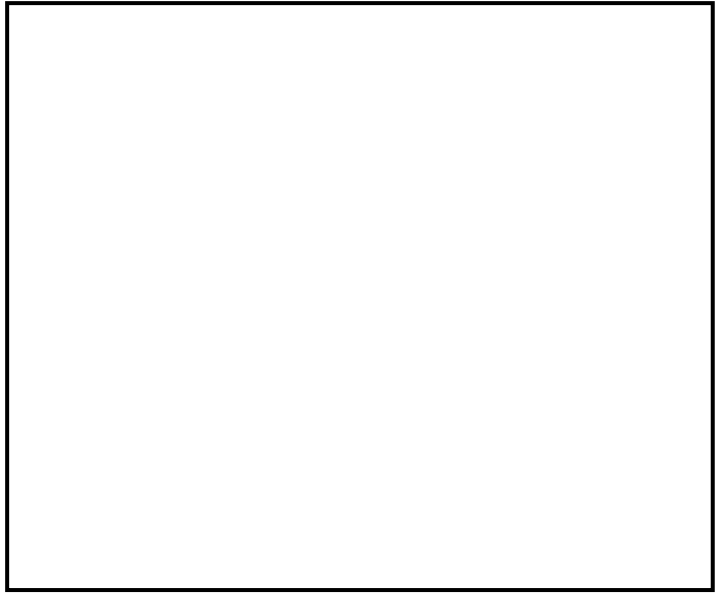
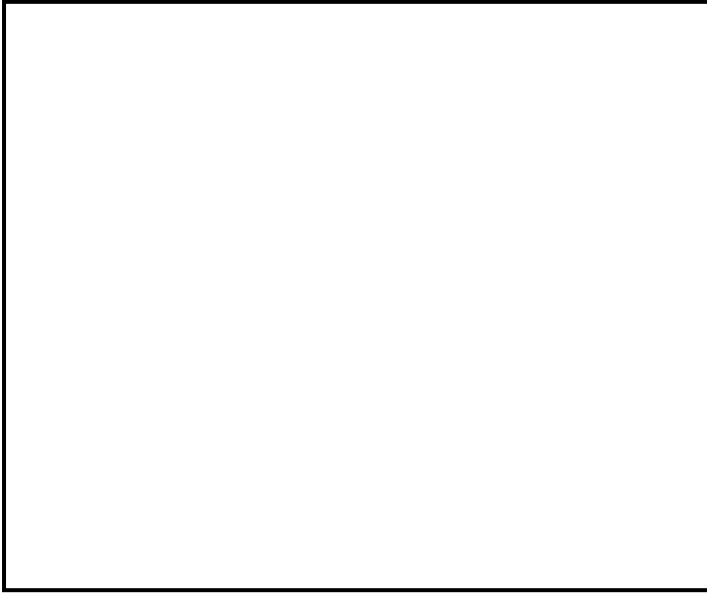


Site Survey
COU Fiber Project
City of Unalaska
Unalaska, Alaska

Date:

PON Location

Cable Routing




Cable Routing Notes



Site Survey
COU Fiber Project
City of Unalaska
Unalaska, Alaska

Date:



PON Location



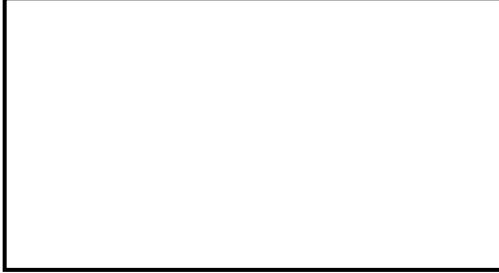
General Scope

The purpose of this document is to provide a detailed scope of work for installing a fiber optic service drop to a particular City of Unalaska facility.

City of Unalaska

Facility Name:

Location of Property



Proposed Cable Path



Legend



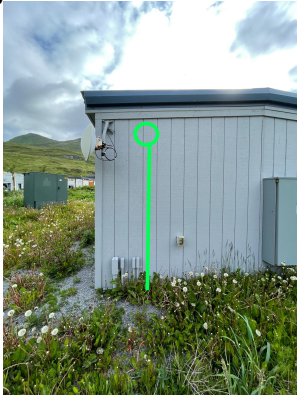
Proposed cable route



Locate Information

Utility locates are required at each site for any necessary underground trenching. A site meet will be required for the City of Unalaska to identify the location and depth of all fuel lines, pipes, conduits or cables placed by the owner in or near the trench path.

Building Penetration Point



Comm Room Access



Installation Notes

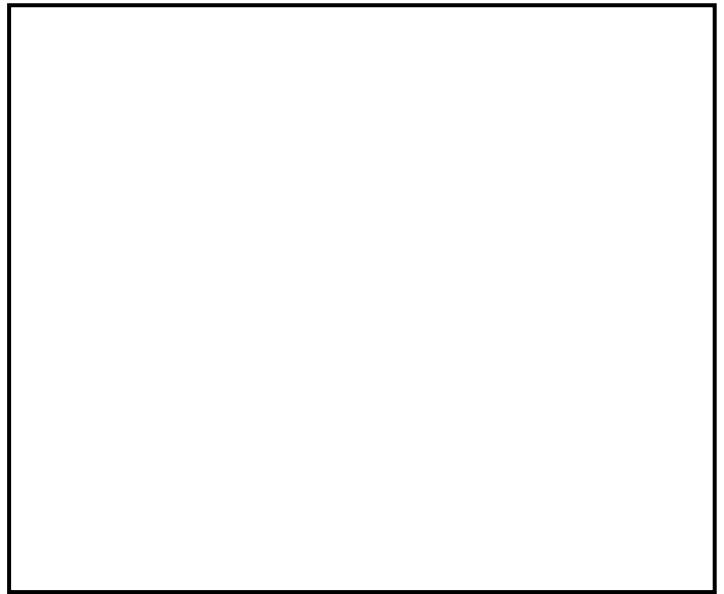
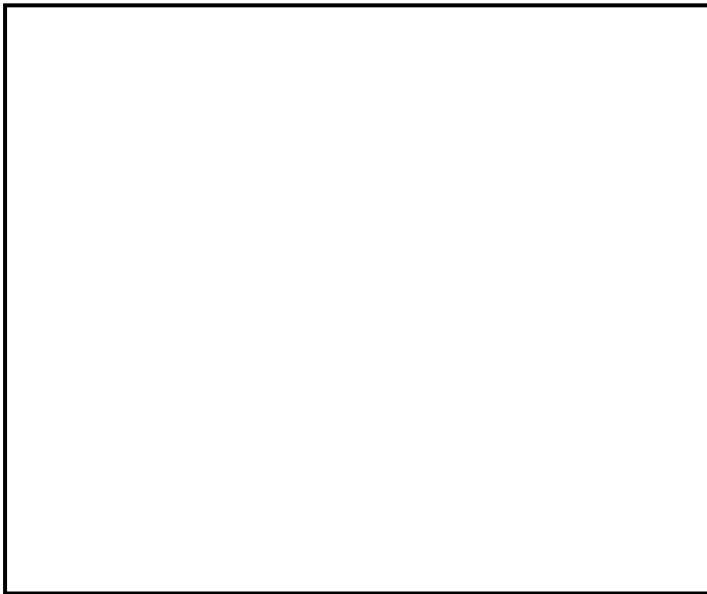
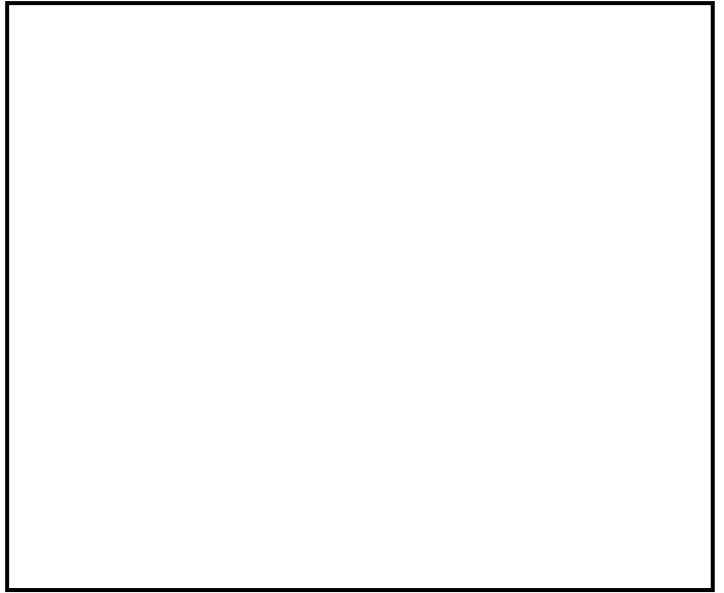
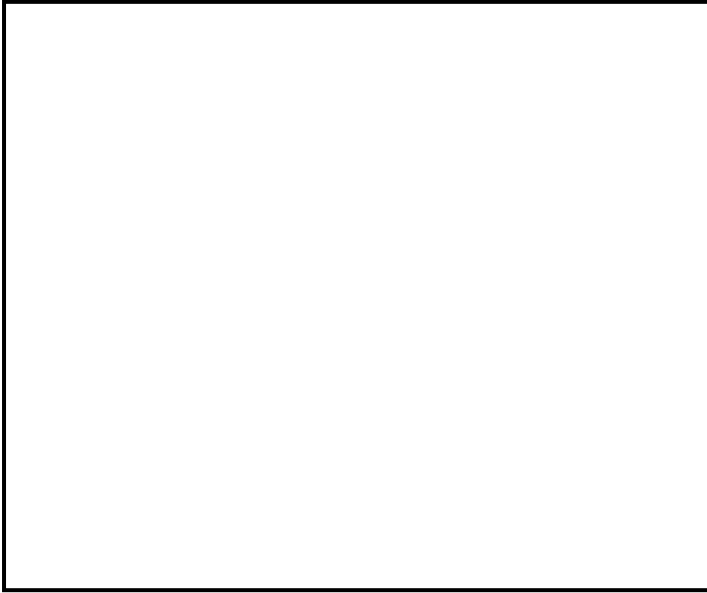


Site Survey
COU Fiber Project
City of Unalaska
Unalaska, Alaska

Date:

PON Location

Cable Routing



Cable Routing Notes



Site Survey
COU Fiber Project
City of Unalaska
Unalaska, Alaska

Date:



PON Location



General Scope

The purpose of this document is to provide a detailed scope of work for installing a fiber optic service drop to a particular City of Unalaska facility.

City of Unalaska

Facility Name:

Location of Property



Proposed Cable Path



Legend



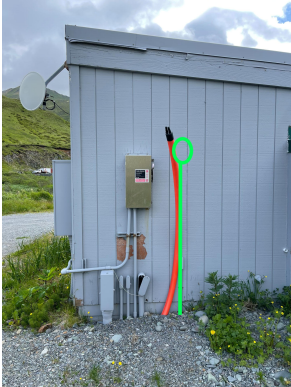
Proposed cable route



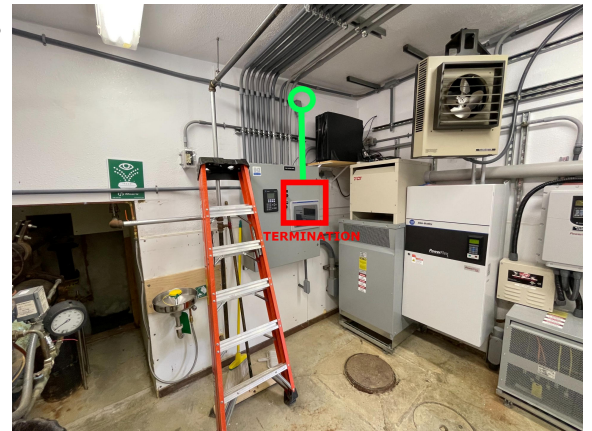
Locate Information

Utility locates are required at each site for any necessary underground trenching. A site meet will be required for the City of Unalaska to identify the location and depth of all fuel lines, pipes, conduits or cables placed by the owner in or near the trench path.

Building Penetration Point



Comm Room Access



Installation Notes

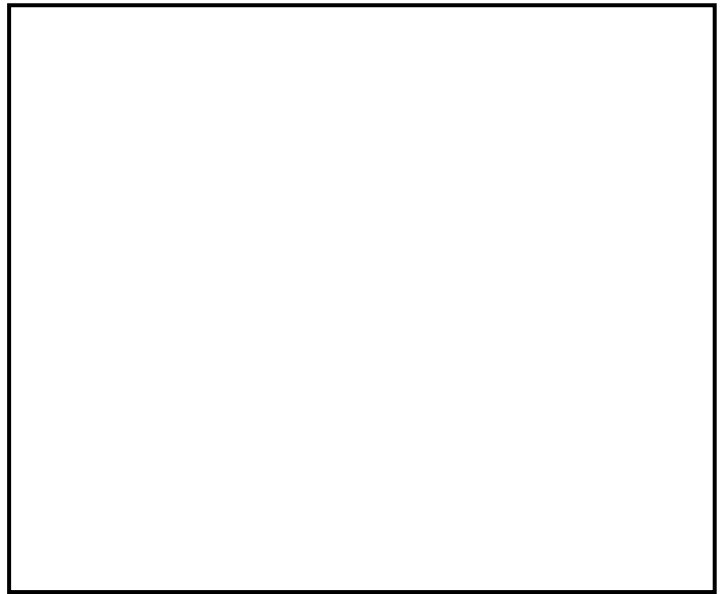
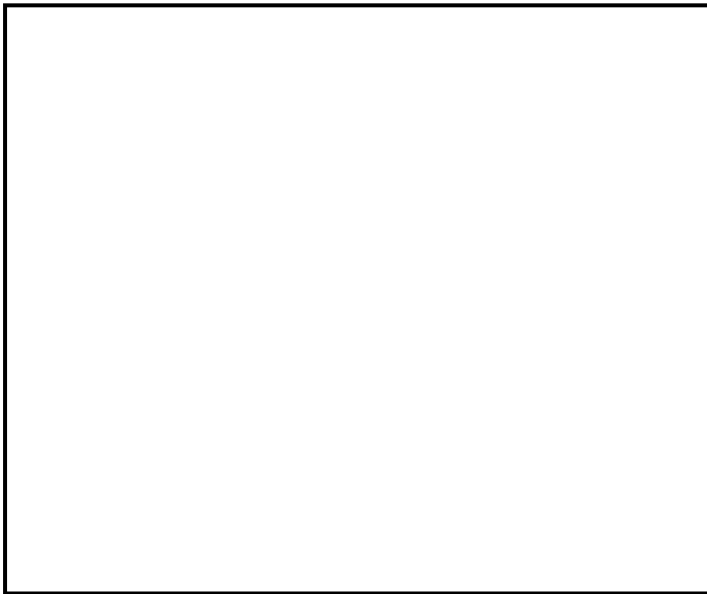
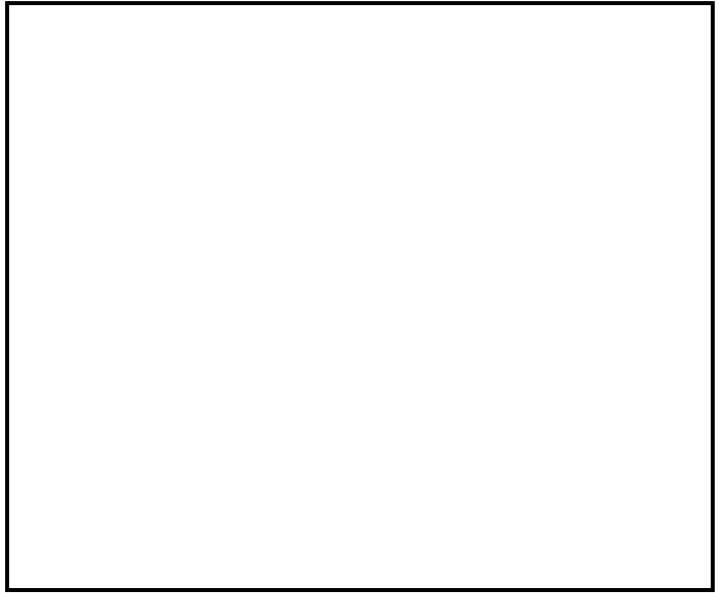
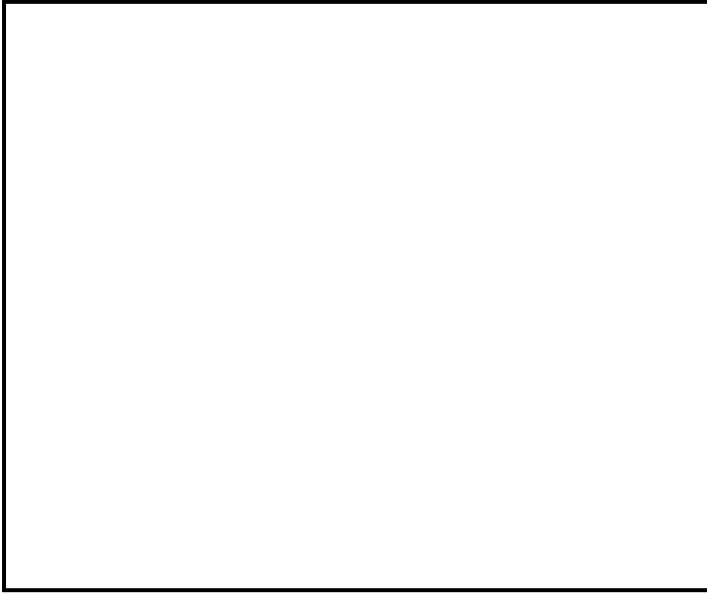


Site Survey
COU Fiber Project
City of Unalaska
Unalaska, Alaska

Date:

PON Location

Cable Routing



Cable Routing Notes



Site Survey
COU Fiber Project
City of Unalaska
Unalaska, Alaska

Date:



PON Location



General Scope

The purpose of this document is to provide a detailed scope of work for installing a fiber optic service drop to a particular City of Unalaska facility.

City of Unalaska

Facility Name:

Location of Property



Proposed Cable Path



Legend



Proposed cable route



Locate Information

Utility locates are required at each site for any necessary underground trenching. A site meet will be required for the City of Unalaska to identify the location and depth of all fuel lines, pipes, conduits or cables placed by the owner in or near the trench path.

Building Penetration Point



Comm Room Access



Installation Notes

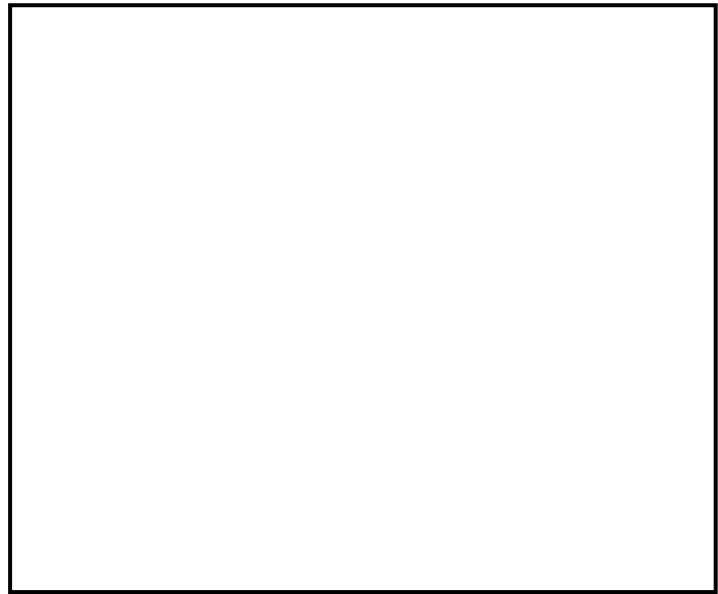
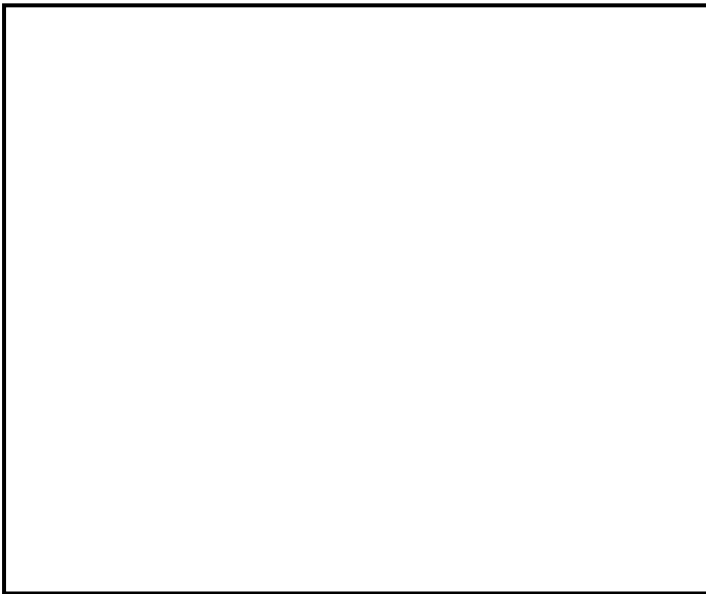
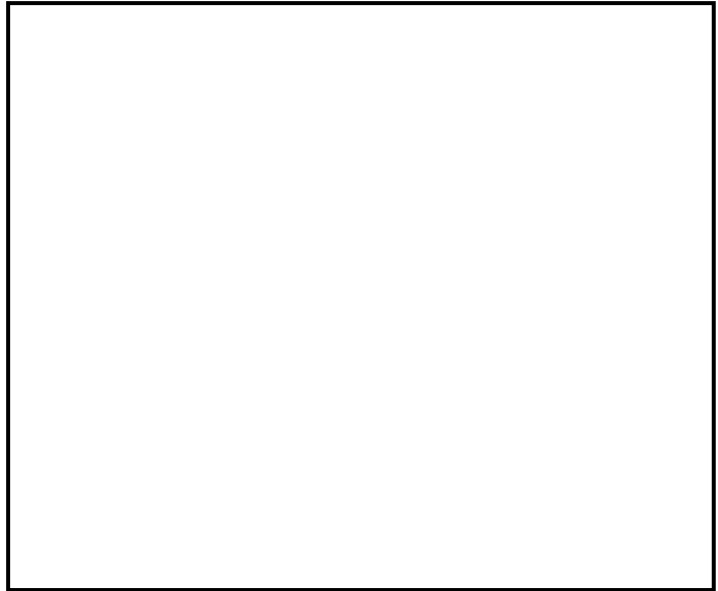


Site Survey
COU Fiber Project
City of Unalaska
Unalaska, Alaska

Date:

PON Location

Cable Routing



Cable Routing Notes



Site Survey
COU Fiber Project
City of Unalaska
Unalaska, Alaska

Date:

PON Location