



### ELECTRICAL LOAD SUMMARY - PCR

DEMAND HISTORY 12 MONTHS HIGHEST READING: 98kW  
 CONVERSION OF kW TO kVA ASSUMING 0.8% POWER FACTOR: 122.5kVA

CONVERSION TO VOLT-AMPERES:  
 122.5kVA X 1.25 (MULT.) X 1000 = 153,125VA

CONVERSION TO AMPERES AT 208V:  
 153,125 / 208V \* 1.7321 = 425 AMPERES

REMOVED LOAD:  
 LIGHTING 31,779VA  
 RECEPTACLES + 2,520VA  
 SUBTOTAL - 34,299VA

ADDED LOAD:  
 LIGHTING @ 125% 32,076VA  
 AHU-3 @ 125% 4,953VA  
 CP-7 @ 125% 2,070VA  
 RECEPTACLES 13,380VA  
 MISCELLANEOUS + 1,870VA  
 SUBTOTAL 47,934VA

NET CHANGE:  
 47,934 - 34,299 = 13,635VA

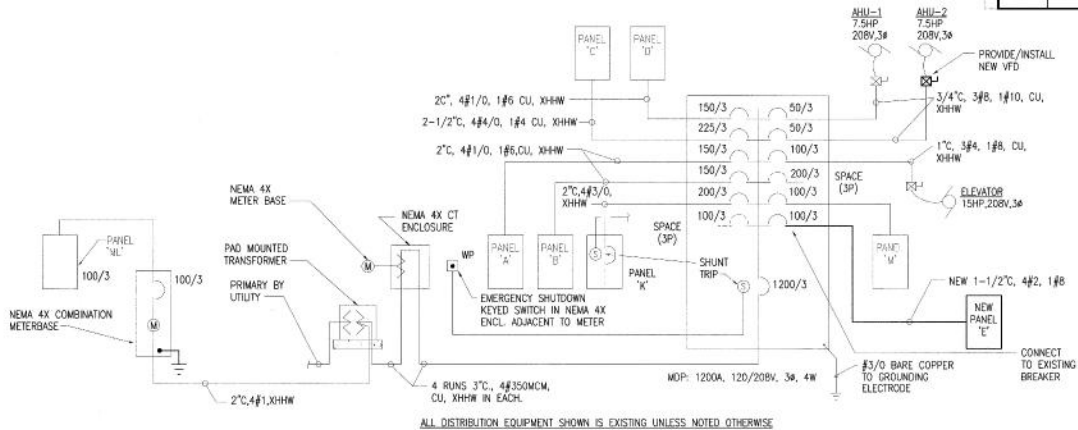
NEW CALCULATED LOAD:  
 153,125 + 13,635 = 166,760VA

165,356 / 208V \* 1.7321 = 463 AMPERES

ACCORDING TO THE ABOVE CALCULATION, THE EXISTING 1200A, 120/208V, 3-PHASE SERVICE IS ADEQUATE FOR BOTH EXISTING AND NEW LOADS AT THE FACILITY

### LUMINAIRE SCHEDULE

DESIGNATION	MFR. MODEL NO. OR APPROVED EQ.	PRODUCT DESCRIPTION	LAMP QTY.	WATTS	TYPE	LOCATION & MOUNTING
A	KIM # GEMC-60LED120WH	42" LED BOLLARD LIGHT, TYPE V DISTRIBUTION, WHITE FINISH, NATURAL CONCRETE RISER	60	60	LIGHT EMITTING DIODE	PATHWAY ANCHOR BASE
B	KIM # 15A-WP9LE3-LSK120 DB1WA-25	LED AREA LIGHT, TYPE III DISTRIBUTION, POLE MOUNTED AT 30 FT ON CONCRETE BASE.	120	175	LED 5100K	DRIVE & PARKING ANCHOR BASE
B1	KIM # 25B-WP9LE3-LSK120 DB1WA-25	SAME AS TYPE 'B' EXCEPT 2 @ 180 DEGREES	120	175	LED 5100K	DRIVE & PARKING ANCHOR BASE
C	KIM # 1W-WPSE3-LSK120-WH	LED WALL BRACKET, GASKETED DIE CAST HOUSING, SPECULAR REFLECTOR, ELECTRONIC DRIVER MODULE, WHITE FINISH	60	86	LED 5100K	EXTERIOR WALL
C1	GLTH # SINDSC-138-12L-S	LED WALL BRACKET, GASKETED DIE CAST HOUSING, STIPPLED GLASS LENS, STAINLESS STEEL FASTENERS, DARK BRONZE FINISH	MULTI	21	LED 4100K	EXTERIOR WALL
D	COLUMBIA # LHV4-654-MARU-24EP-U8D-LHVW66-LHVSP	2X4 FLUORESCENT HIGH BAY, SILVER REFLECTOR W/UPLIGHT, WHITE WIREGUARD, BALLAST DISCONNECT, SIDE PANELS, CABLE MOUNT	6	54	T5HO 5000K	GYMNASIUM PENDANT
E	KIM # PGL71W-LSK120-PS	SURFACE MOUNT LED CANOPY LIGHT, TYPE V DISTRIBUTION, FINISH AS DIRECTED BY ARCHITECT.	60	86	LED 5100K	CANOPY SURFACE
F	PRESCOLITE # DLED4-60LED450K6	6" DIA. RECESSED LED DOWNLIGHT, INTEGRAL HEAT SINK, DIMMING OPTION TBD, 50K HOUR LIFE EXPECTANCY	MULTI	26	LED 5000K	AS SHOWN RECESSED
G	COLUMBIA # STR24-254G-MPO-EP	BI-DIRECTIONAL FLUORESCENT TROFFER, PERFORATED METAL BASKET, UNIVERSAL VOLTAGE ELECTRONIC BALLAST.	2	54	T5HO 5000K	AS SHOWN RECESSED
H	COLUMBIA # BIL4-232-EPLW-U	1X4 BI-LEVEL FLUORESCENT, INTEGRAL OCCUPANCY AND DAYLIGHT CONTROLS, LOW WATTAGE ELECTRONIC BALLAST.	2	32	T8 4100K	AS SHOWN SURFACE
J	COLUMBIA # LHG24-654F-FSCP-MR-24EP	RECESSED 2X4 FLUORESCENT HIGH BAY, CLEAR POLYCARBONATE LENS, FLANGE TRIM, DUAL CIRCUIT, PROGRAMMED START ELECTRONIC BALLASTS.	6	54	T5HO 5000K	RACQUETBALL COURT RECESSED
K	COLUMBIA # AWN4-232-EP	1X4 SURFACE FLUORESCENT, STEEL HOUSING, PRISMATIC ACRYLIC LENS, PROGRAMMED START ELECTRONIC BALLAST	2	32	T8 4100K	AS SHOWN SURFACE
L	FAIL-SAFE # CTGC-42A-120-LL-WHT-VRSD	12" SQ. VANDAL RESISTANT FLUORESCENT, CLEAR PRISMATIC POLYCARBONATE LENS, 120V ELECTRONIC BALLAST, LAMPS PROVIDED WITH PRODUCT.	1	42	TRT 3000K	BELOW GYM TRACK SURFACE
M	COLUMBIA # PW84-132G-LDK-EU-PWPK84	4FT. FLUORESCENT WALL WASH, UNIVERSAL VOLTAGE ELECTRONIC BALLAST, FIELD VERIFY EXACT MOUNTING HARDWARE REQUIRED PRIOR TO ORDER	1	32	T8 4100K	TOP OF DISPLAY CASES
EM	DUAL-LITE # CVEC50-12V-1	COMMERCIAL EMERGENCY LIGHTING UNIT W/2 HEADS, THERMOPLASTIC HOUSING, DUAL VOLTAGE, SELF DIAGNOSTICS, UNIVERSAL MOUNTING PLATE.	-	13	N/A	EXIT DISCHARGE AREAS WALL
EL	DUAL-LITE # LCSNI	DUAL HEAD EMERGENCY LIGHTING UNIT, POLYCARBONATE HOUSING, SELF DIAGNOSTICS, UNIVERSAL VOLTAGE, FIELD ADJUSTABLE.	2	10	HAL	EGRESS PATH WALL 7'-8"
ER	DUAL-LITE # OMSDB1225	TWIN HEAD REMOTE W/SEALED LAMP & SWIVEL ASSEMBLY FOR USE WITH 'EM', GASKETED ALUMINUM MOUNTING PLATE, FIELD AIM ALONG DISCHARGE	2	25	PAR 36	EXIT DISCHARGE AREAS WALL
X	DUAL-LITE # LURWEIFAP	LED EXIT SIGN, WHITE COMPOSITE HOUSING, RED STENCIL FACE, UNIVERSAL FACE, MOUNTING & APPROWS, N-CAD BATTERY, SELF DIAGNOSTICS	-	3.8	LIGHT EMITTING DIODE	EGRESS PATH WALL OR CEILING



1 POWER ONE-LINE DISTRIBUTION DIAGRAM  
 NO SCALE



**KIMIN ASSOCIATES, INC.**  
 ARCHITECTS - PLANNERS - INTERIOR DESIGNERS  
 1000 W. 10TH AVE. SUITE 200  
 ANCHORAGE, AK 99501-3133  
 PHONE: 907.272.8333  
 FAX: 907.272.8333

**RISA Engineering, Inc.**  
 MECHANICAL AND ELECTRICAL CONSULTING ENGINEERS  
 1000 W. 10TH AVE. SUITE 200  
 ANCHORAGE, AK 99501-3133  
 PHONE: 907.272.8333

**UNALASKA COMMUNITY CENTER RENOVATION**

UNALASKA, ALASKA

CITY OF UNALASKA

NO.	NO.	NO.
DATE	BY	CHKD
1-16-10		
PREP	BD SET	
DATE	2017.02	
ELECTRICAL SCHEDULES AND DIAGRAMS		















