

City of Unalaska Eagle's View Elementary - Playground

503 East Broadway, Unalaska, Alaska
03-14-2026

**FOR BIDDING PURPOSES ONLY
NOT FOR CONSTRUCTION**

BIDS DUE:
5pm Monday, April 20

**GREAT WESTERN
RECREATION**

MAIN OFFICE: 435-245-5055
975 SOUTH HWY 89
LOGAN UT 84321

SALES REPRESENTATIVE:
NANCY CASEY
907-394-2577
nancy@gwpark.com



VICINITY MAP

SHEET INDEX

T	Title Sheet	L 6	West Half - Footings
L 1	Project Overview	L 7	East Half Footings
L 2	Site Demo	L 8	Soccer Field Plans & Details
L 3	2-5 Playground Layout	L -9	Details
L 4	West Half - 5-12 Playground	SH	Name
L 5	East Half - 5-12 Playground	SH	Name

OWNER

City of Unalaska Department of Parks, Culture, and Recreation
Jolene Longo, Business and Operations Manager
P.O Box 610 Unalaska, AK 99685
jlongo@unalaska.gov
907-581-1297 office :: 907-359-5954 mobile

CONSULTANT / CONTRACTORS

Great Western Recreation
975 S. Hwy 89
Logan, UT 84321
435-245-5055

Monique Anderson, PLA
AELS 10961
Anderson Land Planning

GameTime and GT Impax
P.O. Box 680121
Fort Payne, AL 35967
435-245-5055

INSTALLER SCOPE & ASSUMPTIONS

Project involves the reconfiguration of 3 existing playground areas into 2 playgrounds and upgrading the existing soccer field to artificial turf with edging and drainage. Scope includes subgrade preparation, grading, and construction of new concrete edging. Scope also includes the layout and assembly of new playground equipment and resilient playground surfacing with a substantial completion date of August 10, 2026.

Contractor shall provide all crew, materials and equipment necessary to complete the following:

1. Furnish and erect temporary security fencing and site security as needed to prevent theft, damage, or injury during construction.
2. Protect existing site infrastructure, such as fencing, pavement, signage, structures. Contractor is 100% responsible for fixing or replacing any site elements that are damaged during construction.
3. Remove & dispose of organic layer on existing soccer field, grade, install subgrade drainage, concrete curb, nailer boards, and wear course in preparation for the installation of owner-supplied artificial turf, by others as per plans.
4. Site grading and subgrade preparation as per plans for both soccer field and playground areas to include drainage infrastructure, gravel, and new curbing.
5. Install new concrete curb as per plans.
6. Lay out and install owner-furnished playground equipment, surfacing, and site furnishings as per plans and manufacturers installation instructions.
7. Install owner-furnished interlocking playground tile surfacing as per manufacturer's installation instructions and as per plans.
8. Hydroseed disturbed lawn areas.
9. Contractor shall provide third party material testing of subgrade compaction to 95% in 6" lifts and for 3500 psi concrete.
10. Contractor is responsible for construction survey as needed to lay out site as per plans.

By	Revision	Date
MA	Details (including nailer board type and attachment requirements), footing types, footing quantities, notes, deadline.	04/13/26
1		

Unalaska City School District
55 E Broadway, Unalaska

Eagle's View Elementary

503 East Broadway, Unalaska

PROJECT/QUOTE #
117777-01-01
117777-02-01

DATE
03/14/2026

SHEET TITLE
TITLE SHEET

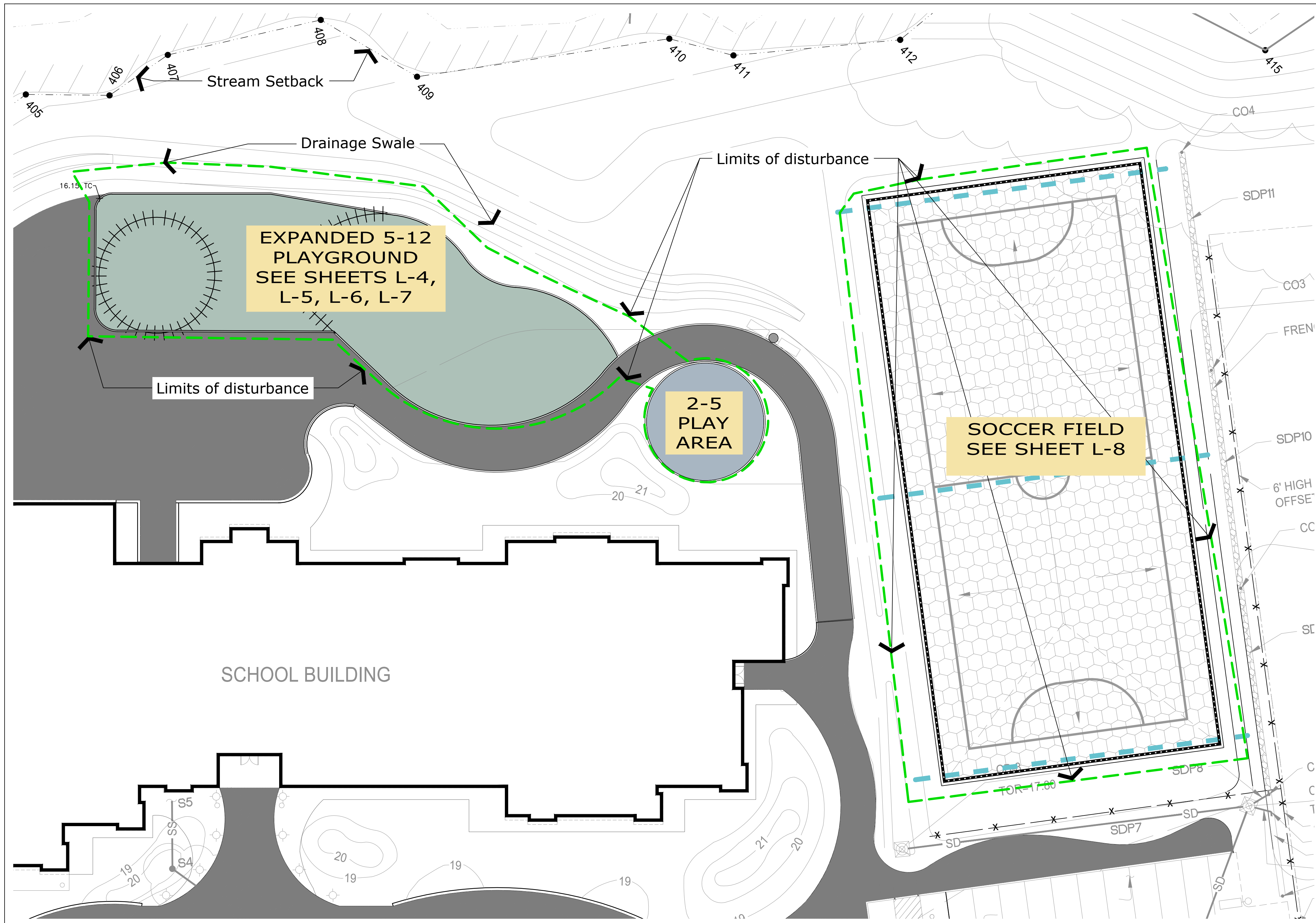
SHEET NO:
T



PROJECT WORK AREA



EXISTING SITE



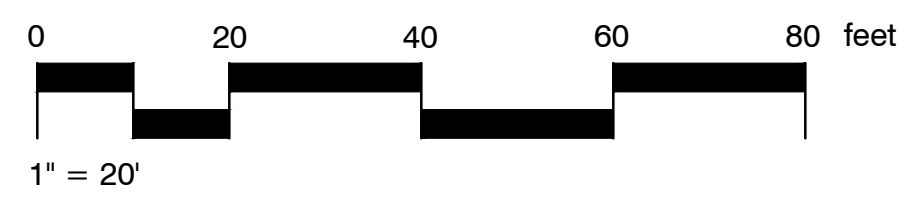
GENERAL NOTES:

- All work shall be in conformance with 2020 AK DOT Standard Specifications.
- Contractor is responsible for protecting existing pavement, landscaping, and structures from damage during installation and for repairing or replacing site elements damaged during installation.
- Contractor is responsible for providing work area fencing, maintaining pedestrian safety, and providing signage during construction.
- Utilities: Contractor is responsible for locating and avoiding existing utilities above and below ground during construction activities. It is the contractor's responsibility to order utility locates prior to breaking ground and to repair or replace utilities damaged during construction.
- This drawing shall not be altered in any way. If changes are required, please contact your Great Western Recreation sales representative.
- It is the contractor's responsibility to verify and maintain all C.P.S.C. playground safety requirements for heights, clearances, and distances related to equipment, safety surfacing, shade structures, and materials. Installation of concrete curb and bike trail by others after installation of shade structure.
- Grade to drain, level, topsoil, and seed all non-paved areas disturbed during construction.

GREAT WESTERN RECREATION
 MAIN OFFICE: 435-245-5055
 975 SOUTH HWY 89
 LOGAN UT 84321
 SALES REPRESENTATIVE:
 NANCY CASEY
 907-394-2577
 nancy@gwpark.com

By	Revision	Date
MA	1	04/13/26
Details (including nailer board type and attachment requirements), footing types, footing quantities, notes, deadline.		

1 SITE OVERVIEW
 Scale: FULL SIZE 22" x 34": 1" = 20'
 Scale: HALF SIZE 11" x 17": 1" = 40'



LEGEND

- Existing Pavement
- Soccer Field
- Existing Topo
- Spot Elevation
- Top of Curb Elev.
- Existing Fence
- Limits of Disturbance
- Existing Storm Drain
- Existing Storm CB
- Existing Playground Fence
- Use Zone for Playground Equipment - Keep Clear
- Drain Pipe - Soccer Field

Unalaska City School District
 55 E Broadway, Unalaska
Eagle's View Elementary
 503 East Broadway, Unalaska

PROJECT/QUOTE #
 117777-01-01
 117777-02-01

DATE
 03/14/2026

SHEET TITLE
OVERALL SITE

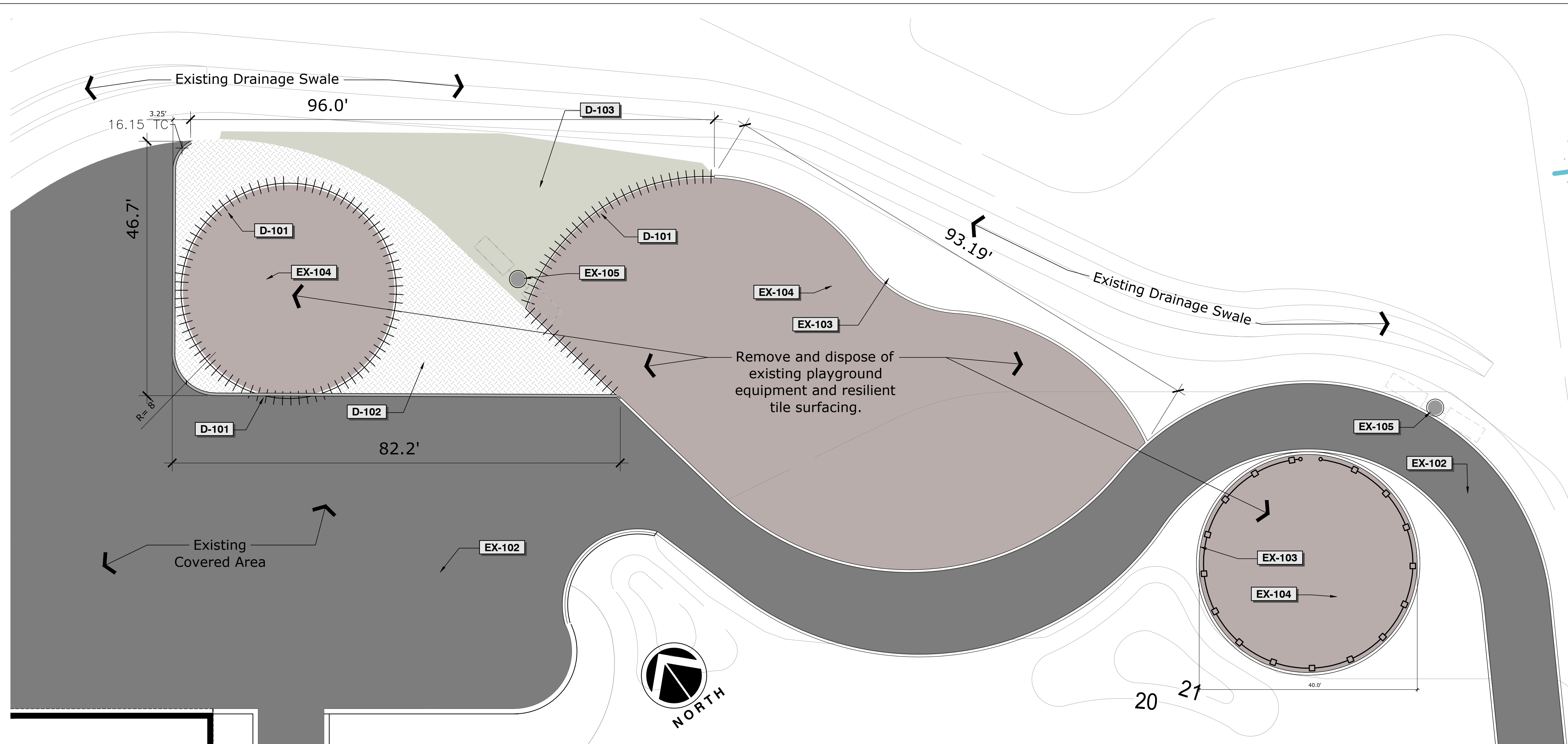
SHEET NO:
L-1





MAIN OFFICE: 435-245-5055
975 SOUTH HWY 89
LOGAN UT 84321

SALES REPRESENTATIVE:
NANCY CASEY
907-394-2577
nancy@gwpark.com



1 DEMOLITION & SUBGRADE PREP PLAN
Scale: FULL SIZE 22" x 34": 1" = 10'
Scale: HALF SIZE 11" x 17": 1" = 20'

LEGEND

	Existing Pavement		Existing Fence
	Soccer Field		Limits of Disturbance
	Existing Topo		Existing Storm Drain
	Spot Elevation		Existing Storm CB
	Top of Curb Elev.		Existing Playground Fence
			Use Zone for Playground Equipment - Keep Clear
			Drain Pipe - Soccer Field

Existing MAIN

SYMBOL	CODE	DESCRIPTION
	EX-102	Existing Pavement to Remain
	EX-103	Exist. Curb to Remain
	EX-104	Existing Play Areas to Remain Remove Exist. Surfacing and Prep for New Tile Surfacing.
	EX-105	LIGHT POLE
	EX-106	EXISTING FENCE TO REMAIN PROTECT DURING CONSTRUCTION

Demolition

SYMBOL	CODE	DESCRIPTION	QTY	DETAIL
	D-101	Sawcut and Dispose of Concrete Curb	195 lf	
	D-102	Remove & Dispose of Existing Pavement Prepare for Play Surfacing	1,342 sf	
	D-103	New Play Area Converted From Natural	1,025 sf	

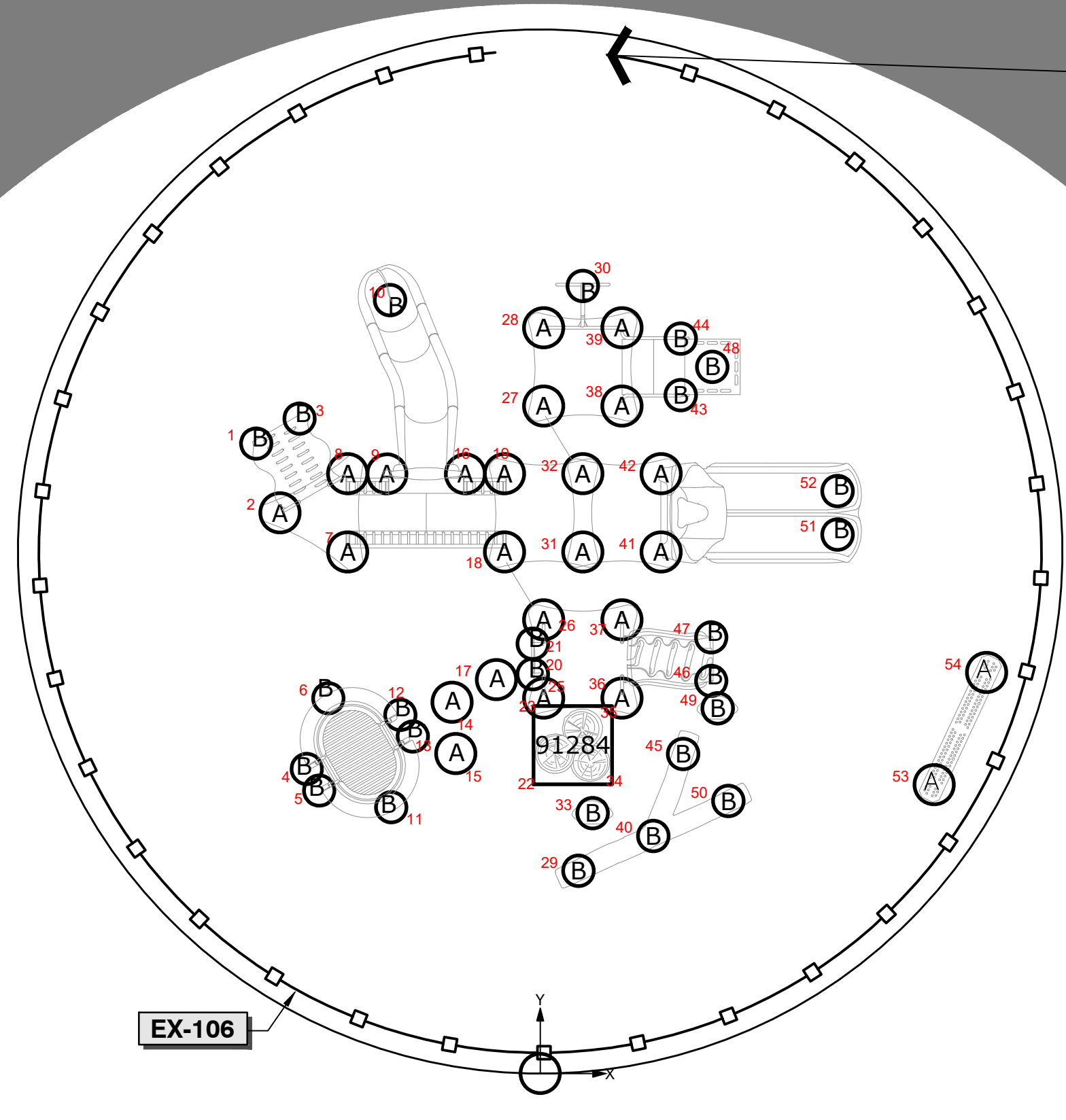
By	Revision	Date
MA	Details (including nailer board type and attachment requirements), footing types, footing quantities, notes, deadline.	04/13/26
1		

Unalaska City School District
55 E Broadway, Unalaska
Eagle's View Elementary
503 East Broadway, Unalaska

PROJECT/QUOTE #	117777-01-01 117777-02-01
DATE	03/14/2026
SHEET TITLE	DEMO PLAN
SHEET NO:	L-2



FOOTINGS ORDINATE TABLE			
HOLE	X	Y	DIAG
1	-10'-10 1/2"	24'-1 1/2"	26'-5 1/2"
2	-9'-11 1/2"	21'-6"	23'-8"
3	-9'-2 1/2"	25'-1"	26'-9"
4	-8'-11 1/2"	11'-8"	14'-8 1/2"
5	-8'-5 1/2"	10'-10"	13'-9"
6	-8'-1 1/2"	14'-4 1/2"	16'-6"
7	-7'-4 1/2"	20'-0"	21'-3 1/2"
8	-7'-4 1/2"	23'-0"	24'-1 1/2"
9	-5'-10 1/2"	23'-0"	23'-8 1/2"
10	-5'-9"	29'-7 1/2"	30'-2"
11	-5'-8 1/2"	10'-2 1/2"	11'-8 1/2"
12	-5'-4 1/2"	13'-9"	14'-9"
13	-4'-10 1/2"	12'-11"	13'-9 1/2"
14	-3'-4 1/2"	14'-3"	14'-7 1/2"
15	-3'-2 1/2"	12'-3"	12'-8"
16	-2'-10 1/2"	23'-0"	23'-2"
17	-1'-8"	15'-1"	15'-2"
18	-1'-4 1/2"	20'-0"	20'-0 1/2"
19	-1'-4 1/2"	23'-0"	23'-0 1/2"
20	0'-3 1/2"	15'-3 1/2"	15'-3 1/2"
21	0'-3 1/2"	16'-5 1/2"	16'-5 1/2"
22	0'-3"	11'-1"	11'-1"
23	0'-3"	14'-1"	14'-1"
24	0'-0"	0'-0"	0'-0"
25	0'-1 1/2"	14'-4 1/2"	14'-4 1/2"
26	0'-1 1/2"	17'-4 1/2"	17'-4 1/2"
27	0'-1 1/2"	25'-7"	25'-7"
28	0'-1 1/2"	28'-7"	28'-7"
29	1'-5 1/2"	7'-9"	7'-11"
30	1'-7 1/2"	30'-2"	30'-2 1/2"
31	1'-7 1/2"	20'-0"	20'-0 1/2"
32	1'-7 1/2"	23'-0"	23'-0 1/2"
33	2'-0"	9'-11 1/2"	10'-2"
34	2'-9"	11'-1"	11'-5"
35	2'-9"	14'-1"	14'-4 1/2"
36	3'-1 1/2"	14'-4 1/2"	14'-8 1/2"
37	3'-1 1/2"	17'-4 1/2"	17'-8"
38	3'-1 1/2"	25'-7"	25'-9"
39	3'-1 1/2"	28'-7"	28'-9"
40	4'-4"	9'-1 1/2"	10'-1"
41	4'-7 1/2"	20'-0"	20'-6"
42	4'-7 1/2"	23'-0"	23'-5 1/2"
43	5'-4 1/2"	26'-0"	26'-6 1/2"
44	5'-4 1/2"	28'-2"	28'-8"
45	5'-5 1/2"	12'-3"	13'-5"
46	6'-6 1/2"	15'-0 1/2"	16'-5"
47	6'-6 1/2"	16'-8 1/2"	17'-11 1/2"
48	6'-7"	27'-1"	27'-10 1/2"
49	6'-9 1/2"	14'-0"	15'-6 1/2"
50	7'-2 1/2"	10'-5 1/2"	12'-8 1/2"
51	11'-4 1/2"	20'-8"	23'-7"
52	11'-4 1/2"	22'-4"	25'-0 1/2"
53	15'-1"	11'-1"	18'-8 1/2"
54	17'-1"	15'-4 1/2"	23'-0"



1 2-5 FOOTING LAYOUT
 Scale: FULL SIZE 22" x 34": 1" = 5'
 Scale: HALF SIZE 11" x 17": 1" = 10'

REFERENCE NOTES SCHEDULE

SYMBOL	CODE	DESCRIPTION	QTY	DETAIL
32 Site Development				
	32-01	Unitary Surfacing 2-5 Area	1,257 sf	
	32-02	Unitary Surfacing for 5-12 Area 4.25" Interlocking Tiles	8,183 sf	
	32-05	New 6"x6" Concrete Curb	126 lf	3/L-9
	32-06	New Curb - with weep holes	194 lf	4/L-9
	32-09	Concrete Curb around Turf Field	591 lf	1/L-9
	32-10	Artificial Turf Field. Remove and dispose of top 6" exist. sod and soil. Build back with gravel as per plans and details.	18,683 sf	1/L-9
	32-11	Topsoil & Seed disturbed areas	4,466 sf	
	32-12	4" Perforated Pipe	341 lf	1/L-9
Demolition				
	D-101	Sawcut and Dispose of Concrete Curb	195 lf	
	D-102	Remove & Dispose of Existing Pavement Prepare for Play Surfacing	1,342 sf	
	D-103	New Play Area Converted From Natural	1,025 sf	
Existing				
	EX-102	Existing Pavement to Remain	3,136,438 sf	
	EX-103	Exist. Curb to Remain	1,937 lf	
	EX-104	Existing Play Areas to Remain Remove Exist. Surfacing and Prep for New Tile Surfacing.	7,192 sf	
	EX-105	LIGHT POLE	3	
	EX-106	EXISTING FENCE TO REMAIN PROTECT DURING CONSTRUCTION	1,533 lf	

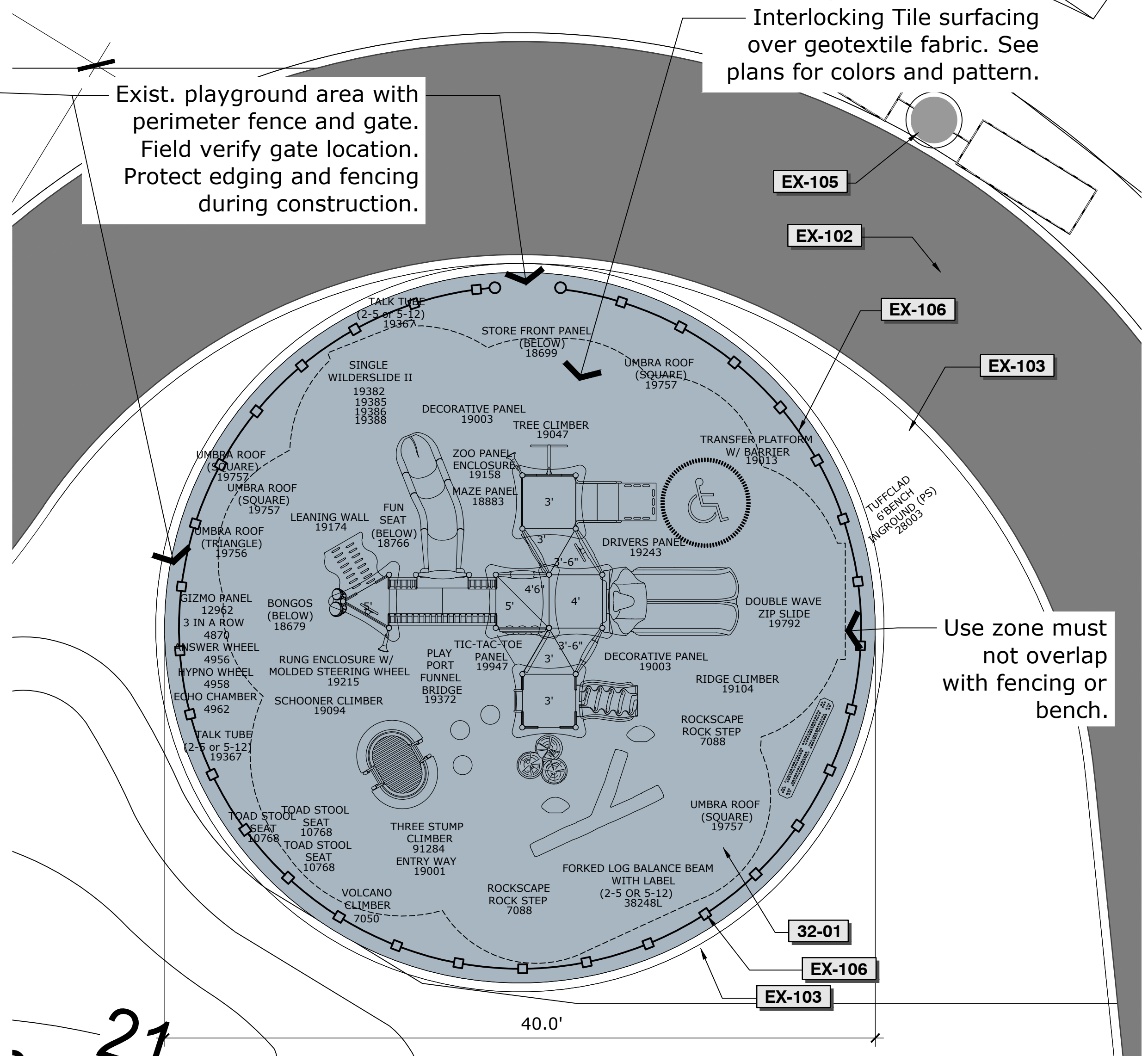
* IN GROUND 91708 EXTENSION REQUIRED

FOOTINGS TABLE
 See Detail 9 on Sheet L 9 for FOOTINGS TABLE

* DETAILS MEASURED FROM FINISHED GRADE

NOTE:
 ON NON-LETTERED HOLES, TO ENSURE CONCRETE REQUIREMENTS PLEASE REFER TO EACH COMPONENTS INSTALLATION SHEETS.

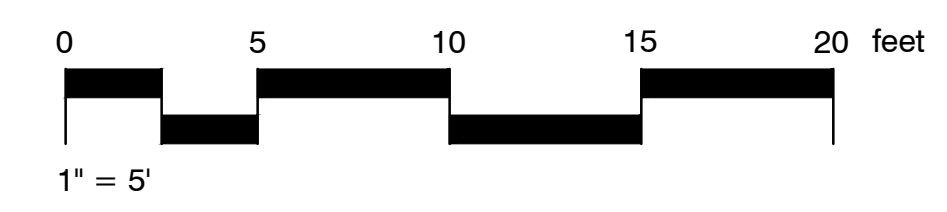
IF COMPACTED STONE IS REQUIRED BELOW SUBGRADE, PLEASE CONTACT GAMETIME FOR CUSTOM FOOTER DETAILS.



1 2-5 PLAYGROUND AREA
 Scale: FULL SIZE 22" x 34": 1" = 5'
 Scale: HALF SIZE 11" x 17": 1" = 10'

2-5 PLAYGROUND SHEET NOTES:

- All work shall be in conformance with 2020 AK DOT Standard Specifications.
- See Sheet L1 for Legend and General Notes.
- Maintain existing playground curbing, fencing, drainage pattern, and finish grade.
- Compact subgrade and wear course to 95% compaction prior to installation of interlocking tiles.
- Install playground equipment as per manufacturer's installation instructions and per CPSC 2026 and ASTM F1487-25.
- On non-lettered holes, to ensure concrete requirements please refer to each components installation sheets.
- If compacted stone is required below subgrade, please contact GameTime for custom footer details.
- Field verify that footing layout will result in use zone compliance with



GREAT WESTERN RECREATION

MAIN OFFICE: 435-245-5055
 975 SOUTH HWY 89
 LOGAN UT 84321

SALES REPRESENTATIVE:
 NANCY CASEY
 907-394-2577
 nancy@gwpark.com

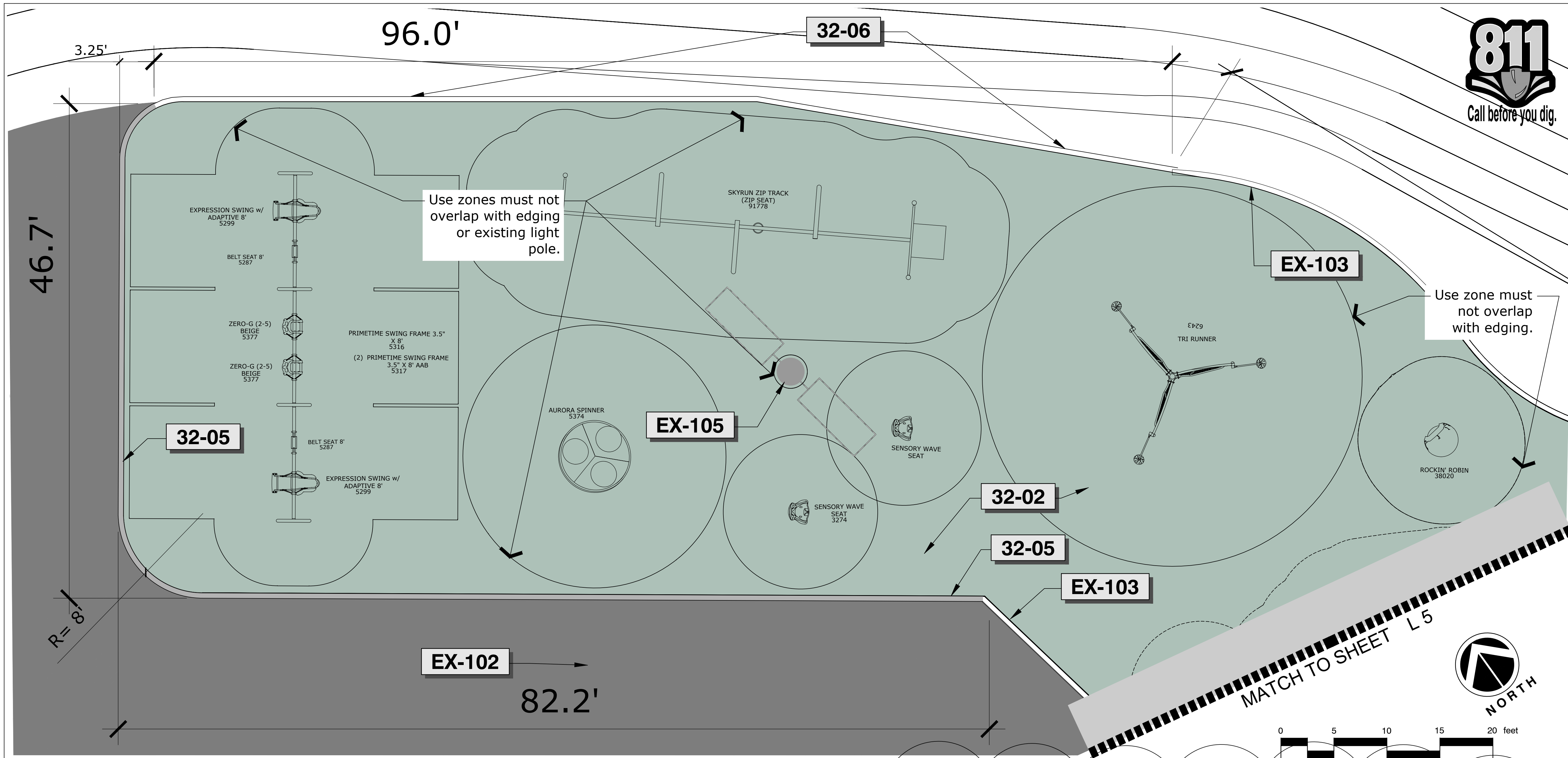
By	Revision	Date
MA	Details (including nailer board type and attachment requirements), footing types, footing quantities, notes, deadline.	04/13/26
1		

Unalaska City School District
 55 E Broadway, Unalaska

Eagle's View Elementary

503 East Broadway, Unalaska

PROJECT/QUOTE #	117777-01-01 117777-02-01
DATE	03/14/2026
SHEET TITLE	2-5 PLAY AREA
SHEET NO:	L-3



GREAT WESTERN RECREATION
 MAIN OFFICE: 435-245-5055
 975 SOUTH HWY 89
 LOGAN UT 84321
 SALES REPRESENTATIVE:
 NANCY CASEY
 907-394-2577
 nancy@gwpark.com

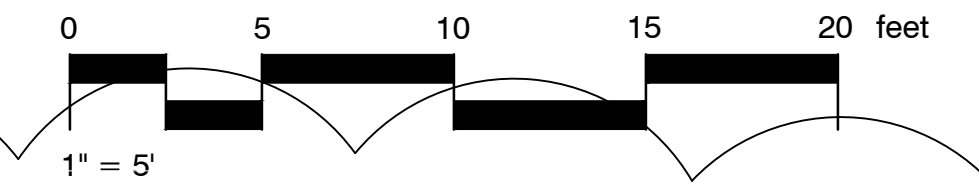
By	Revision	Date
MA	1	04/13/26
Details (including nailer board type and attachment requirements), footing types, footing quantities, notes, deadline.		

1 WEST HALF; MAIN PLAYGROUND AREA
 Scale: FULL SIZE 22" x 34": 1" = 5'
 Scale: HALF SIZE 11" x 17": 1" = 10'

32 Site Development				
SYMBOL	CODE	DESCRIPTION	QTY	DETAIL
[Blue Box]	32-01	Unitary Surfacing 2-5 Area	1,257 sf	
[Green Box]	32-02	Unitary Surfacing for 5-12 Area 4.25" Interlocking Tiles	8,183 sf	
[Grey Line]	32-05	New 6"x6" Concrete Curb	126 lf	3/L-9
[Dashed Line]	32-06	New Curb - with weep holes	98 lf	4/L-9
[Dotted Line]	32-09	Concrete Curb around Turf Field	591 lf	1/L-9
[Turf Pattern]	32-10	Artificial Turf Field. Remove and dispose of top 6" exist. sod and soil. Build back with gravel as per plans and details.	18,683 sf	1/L-9
[Dotted Area]	32-11	Topsoil & Seed disturbed areas	4,466 sf	
[Blue Line]	32-12	4" Perforated Pipe	341 lf	1/L-9

Existing MAIN		
SYMBOL	CODE	DESCRIPTION
[Grey Box]	EX-102	Existing Pavement to Remain
[Dashed Line]	EX-103	Exist. Curb to Remain
[Brown Box]	EX-104	Existing Play Areas to Remain Remove Exist. Surfacing and Prep for New Tile Surfacing.
[Circle]	EX-105	LIGHT POLE
[Crossed Line]	EX-106	EXISTING FENCE TO REMAIN PROTECT DURING CONSTRUCTION

- 5-12 PLAYGROUND SHEET NOTES:**
- All work shall be in conformance with 2020 AK DOT Standard Specifications.
 - See Sheet L1 for Legend and General Notes.
 - See Sheets L 6 & L 7 for footing layout. On non-lettered holes, to ensure concrete requirements please refer to each components installation sheets.
 - In existing play areas, maintain existing drainage pattern and finish grade. In expanded play areas, continue same drainage pattern.
 - Compact subgrade and wear course to 95% compaction prior to installation of interlocking tiles.
 - Install playground equipment as per manufacturer's installation instructions and per CPSC 2026 and ASTM F1487-25.
 - On non-lettered holes, to ensure concrete requirements please refer to each components installation sheets.
 - If compacted stone is required below subgrade, please contact GameTime for custom footer details.
 - Field verify that footing layout will result in use zone compliance with CPSC 2026 and ASTM F1487-25. ALL play items must be at least 6' from other structures, such as existing light pole.
 - If footing size is different on plans vs installation sheets, installer shall defer to larger footing size.



Unalaska City School District
 55 E Broadway, Unalaska
Eagle's View Elementary
 503 East Broadway, Unalaska

PROJECT/QUOTE #
 117777-01-01
 117777-02-01
 DATE
 03/14/2026
 SHEET TITLE
WEST HALF 5-12 PLAY AREA
 SHEET NO:
L-4

32 Site Development

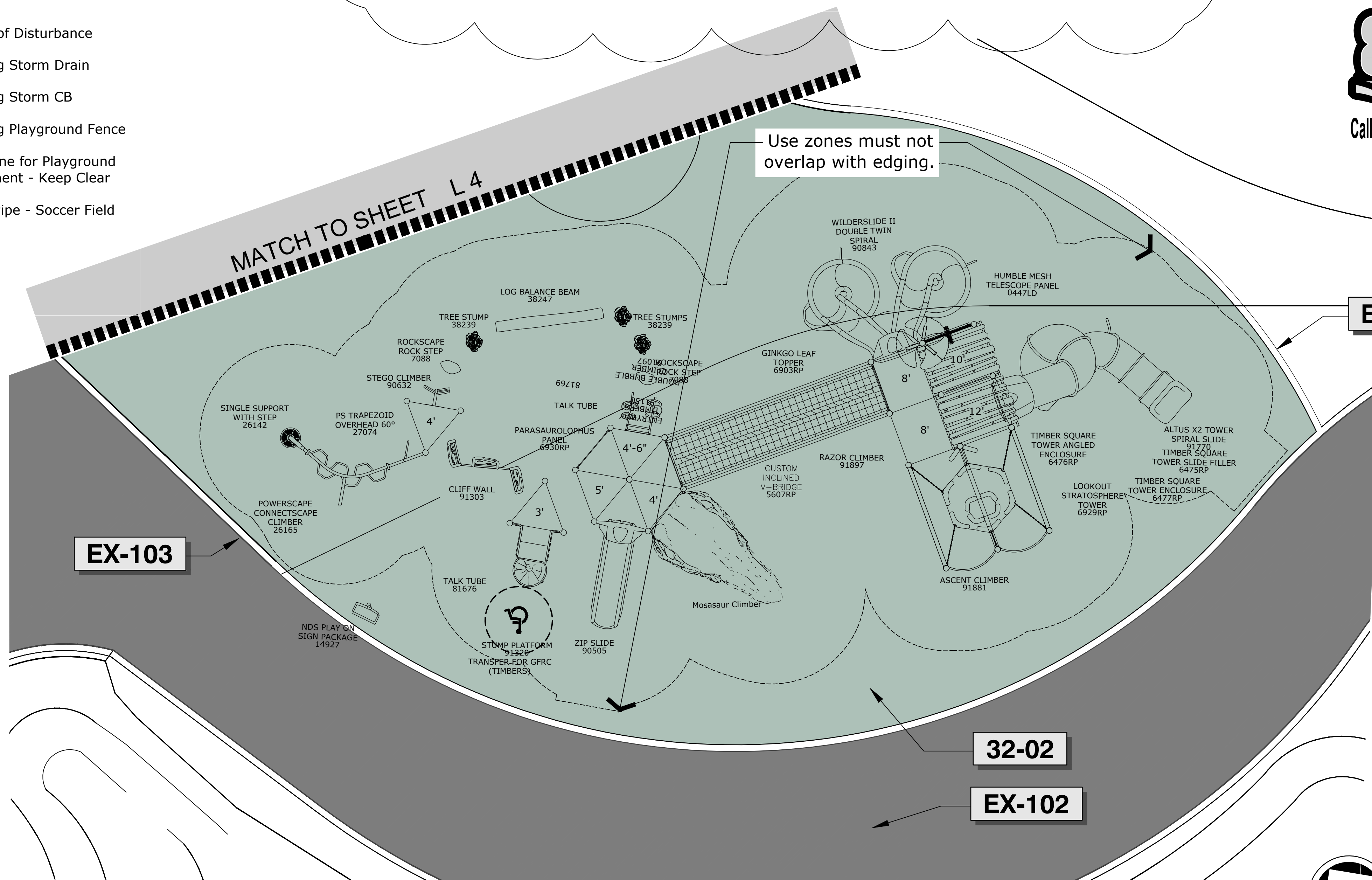
SYMBOL	CODE	DESCRIPTION	QTY	DETAIL
	32-01	Unitary Surfacing 2-5 Area	1,257 sf	
	32-02	Unitary Surfacing for 5-12 Area 4.25" Interlocking Tiles	8,183 sf	
	32-05	New 6"x6" Concrete Curb	126 lf	3/L-9
	32-06	New Curb - with weep holes	98 lf	4/L-9
	32-09	Concrete Curb around Turf Field	591 lf	1/L-9
	32-10	Artificial Turf Field. Remove and dispose of top 6" exist. sod and soil. Build back with gravel as per plans and details.	18,683 sf	1/L-9
	32-11	Topsoil & Seed disturbed areas	4,466 sf	
	32-12	4" Perforated Pipe	341 lf	1/L-9

LEGEND

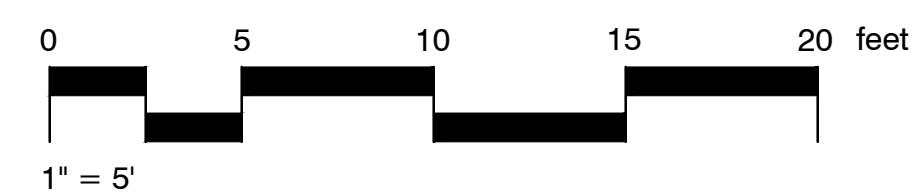
	Existing Pavement		Existing Fence
	Soccer Field		Limits of Disturbance
	Existing Topo		Existing Storm Drain
	Spot Elevation		Existing Storm CB
	Spot Elevation		Existing Playground Fence
	Top of Curb Elev.		Use Zone for Playground Equipment - Keep Clear
			Drain Pipe - Soccer Field

1 5-12 PLAYGROUND SHEET NOTES:

- All work shall be in conformance with 2020 AK DOT Standard Specifications.
- See Sheet L1 for Legend and General Notes.
- See Sheets L 6 & L 7 for footing layout. On non-lettered holes, to ensure concrete requirements please refer to each components installation sheets.
- In existing play areas, maintain existing drainage pattern and finish grade. In expanded play areas, continue same drainage pattern.
- Compact subgrade and wear course to 95% compaction prior to installation of interlocking tiles.
- Install playground equipment as per manufacturer's installation instructions and per CPSC 2026 and ASTM F1487-25.
- On non-lettered holes, to ensure concrete requirements please refer to each components installation sheets.
- If compacted stone is required below subgrade, please contact GameTime for custom footer details.
- Field verify that footing layout will result in use zone compliance with CPSC 2026 and ASTM F1487-25. ALL play items must be at least 6' from other structures, such as existing light pole.
- If footing size is different on plans vs installation sheets, installer shall defer to larger footing size.



1 EAST HALF: 5-12 PLAYGROUND STRUCTURE
 Scale: FULL SIZE 22" x 34": 1" = 5'
 Scale: HALF SIZE 11" x 17": 1" = 10'



MAIN OFFICE: 435-245-5055
 975 SOUTH HWY 89
 LOGAN UT 84321

SALES REPRESENTATIVE:
 NANCY CASEY
 907-394-2577
 nancy@gwpark.com

By	Revision	Date
MA	Details (including nailer board type and attachment requirements), footing types, footing quantities, notes, deadline.	04/13/26
1		

Unalaska City School District
 55 E Broadway, Unalaska
Eagle's View Elementary
 503 East Broadway, Unalaska

PROJECT/QUOTE #
 117777-01-01
 117777-02-01

DATE
 03/14/2026

SHEET TITLE
**EAST HALF 5-12
 PLAY AREA**

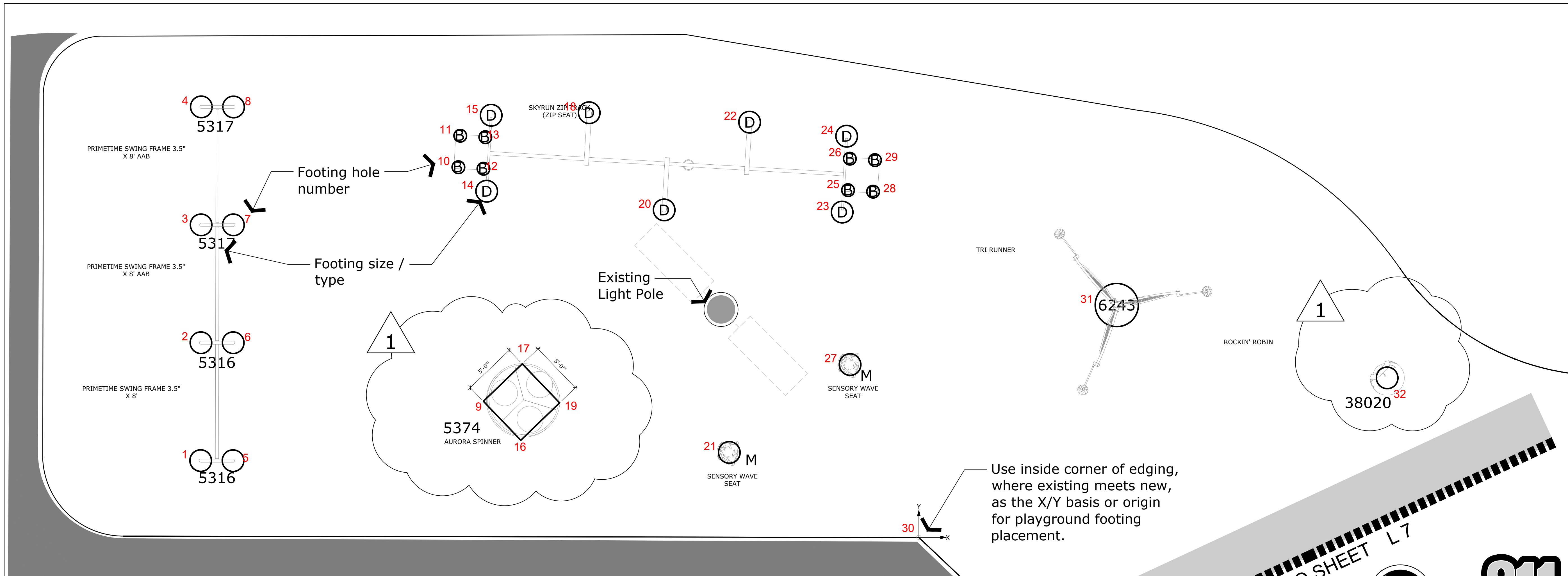
SHEET NO:
L-5



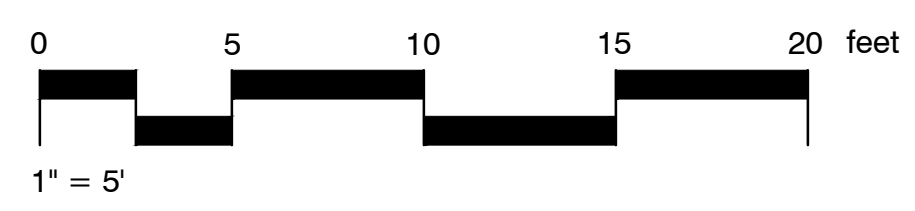
MAIN OFFICE: 435-245-5055
975 SOUTH HWY 89
LOGAN UT 84321

SALES REPRESENTATIVE:
NANCY CASEY
907-394-2577
nancy@gwpark.com

By	Revision	Date
MA	1	04/13/26
Details (including nailer board type and attachment requirements), footing types, footing quantities, notes, deadline.		



1 WEST HALF: FOOTING LAYOUT
Scale: FULL SIZE 22" x 34": 1" = 5'
Scale: HALF SIZE 11" x 17": 1" = 10'



FOOTINGS ORDINATE TABLE			
HOLE	X	Y	DIAG
1	-66'-7"	7'-1 1/2"	66'-11 1/2"
2	-66'-7"	18'-0 1/2"	68'-11 1/2"
3	-66'-6 1/2"	28'-11 1/2"	72'-7"
4	-66'-6 1/2"	39'-10 1/2"	77'-7"
5	-63'-7"	7'-1 1/2"	64'-0"
6	-63'-7"	18'-0 1/2"	66'-1"
7	-63'-7"	28'-11 1/2"	69'-10"
8	-63'-6 1/2"	39'-10 1/2"	75'-0 1/2"
9	-43'-9 1/2"	12'-8"	45'-7"
10	-42'-8 1/2"	34'-3 1/2"	54'-9 1/2"
11	-42'-6 1/2"	37'-2 1/2"	56'-6"
12	-40'-4 1/2"	34'-2"	52'-10 1/2"
13	-40'-2 1/2"	37'-1"	54'-8 1/2"
14	-40'-1"	32'-1"	51'-4"
15	-39'-8"	39'-1 1/2"	55'-8 1/2"
16	-37'-0"	5'-7"	37'-5"
17	-36'-8 1/2"	19'-6"	41'-7"
18	-30'-7"	39'-4 1/2"	49'-10"
19	-29'-11"	12'-5"	32'-4 1/2"
20	-23'-7 1/2"	30'-4"	38'-5 1/2"
21	-17'-7"	7'-10 1/2"	19'-3"
22	-15'-8 1/2"	38'-6"	41'-6 1/2"

FOOTINGS ORDINATE TABLE			
HOLE	X	Y	DIAG
23	-7'-1 1/2"	30'-1 1/2"	30'-11 1/2"
24	-6'-8 1/2"	37'-2"	37'-9 1/2"
25	-6'-7"	32'-2"	32'-10"
26	-6'-5"	35'-1"	35'-8"
27	-6'-4 1/2"	16'-0"	17'-3"
28	-4'-3"	32'-0 1/2"	32'-4"
29	-4'-1"	34'-11 1/2"	35'-2 1/2"
30	0'-0"	0'-0"	0'-0"
31	18'-4 1/2"	21'-6 1/2"	28'-3 1/2"
32	43'-5"	14'-9 1/2"	45'-10 1/2"

* IN GROUND 91708 EXTENSION REQUIRED

FOOTINGS TABLE			
TYPE	DIAMETER/SIDE	DEPTH*	QTY.
A			
B			
D			
G			
M			

NOTE:
ON NON-LETTERED HOLES, TO ENSURE CONCRETE REQUIREMENTS PLEASE REFER TO EACH COMPONENTS INSTALLATION SHEETS.
IF COMPACTED STONE IS REQUIRED BELOW SUBGRADE, PLEASE CONTACT GAMETIME FOR CUSTOM FOOTER DETAILS.

5-12 PLAYGROUND SHEET NOTES:

- All work shall be in conformance with 2020 AK DOT Standard Specifications.
- See Sheet L1 for Legend and General Notes.
- See Details Sheet L9 for Footing Details and Table.
- See Sheets L 6 & L 7 for footing layout. On non-lettered holes, to ensure concrete requirements please refer to each components installation sheets.
- In existing play areas, maintain existing drainage pattern and finish grade. In expanded play areas, continue same drainage pattern.
- Compact subgrade and wear course to 95% compaction prior to installation of interlocking tiles.
- Install playground equipment as per manufacturer's installation instructions and per CPSC 2026 and ASTM F1487-25.
- On non-lettered holes, to ensure concrete requirements please refer to each components installation sheets.
- If compacted stone is required below subgrade, please contact GameTime for custom footer details.
- Field verify that footing layout will result in use zone compliance with CPSC 2026 and ASTM F1487-25. ALL play items must be at least 6' from other structures, such as existing light pole.
- If footing size is different on plans vs installation sheets, installer shall defer to larger footing size.

2 WEST HALF: FOOTING ORDINATE CHART

MATCH TO SHEET L7



Unalaska City School District
55 E Broadway, Unalaska
Eagle's View Elementary
503 East Broadway, Unalaska

PROJECT/QUOTE #
117777-01-01
117777-02-01

DATE
03/14/2026

SHEET TITLE
WEST HALF FOOTINGS

SHEET NO:
L-6

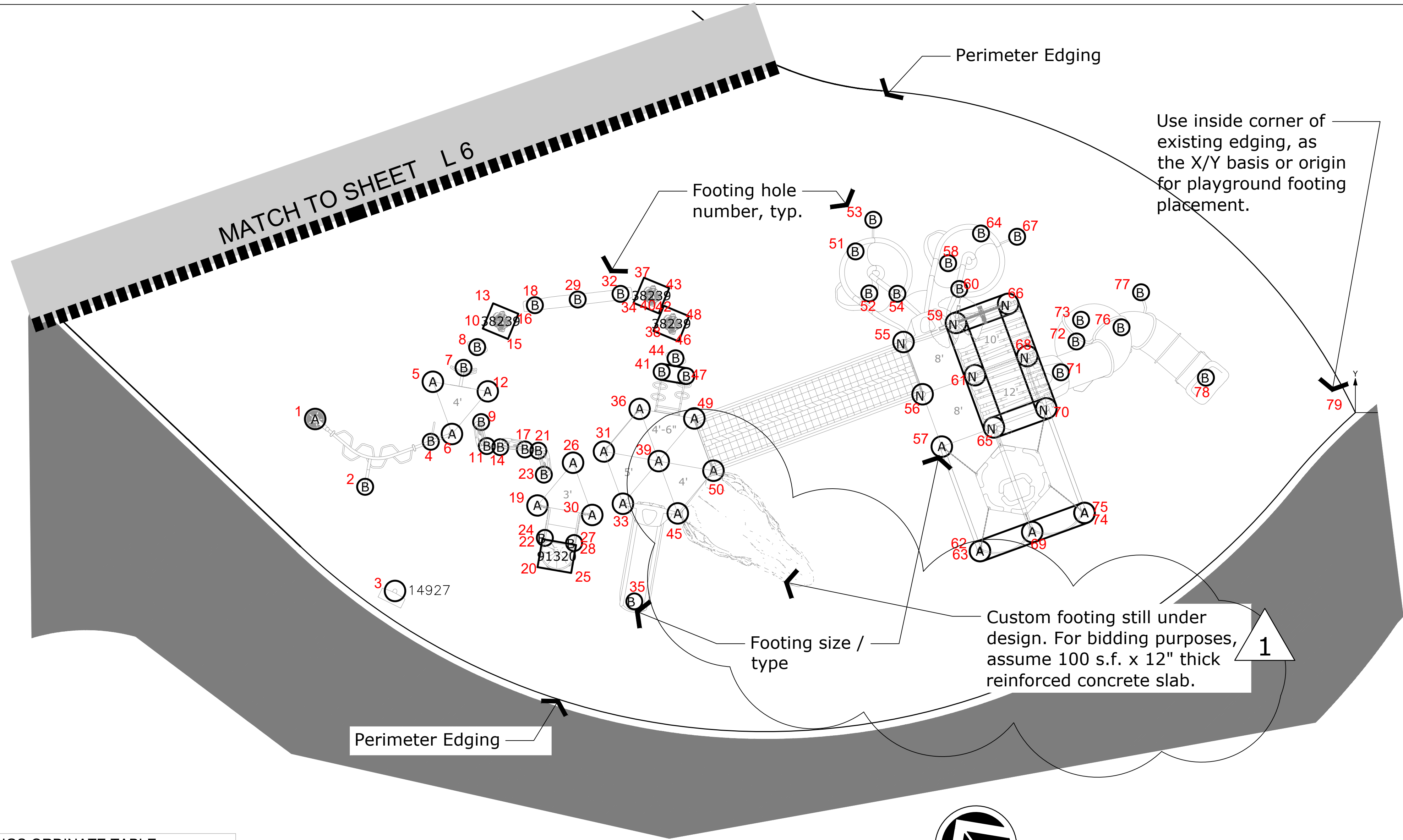
FOOTINGS ORDINATE TABLE			
HOLE	X	Y	DIAG
1	-76'-3 1/2"	-0'-6"	76'-3 1/2"
2	-72'-7 1/2"	-5'-5 1/2"	72'-10"
3	-70'-5 1/2"	-13'-1"	71'-8"
4	-67'-9 1/2"	-2'-1 1/2"	67'-10"
5	-67'-8"	2'-3"	67'-8 1/2"
6	-66'-3"	-1'-7"	66'-3 1/2"
7	-65'-5"	3'-3 1/2"	65'-6"
8	-64'-5"	4'-9 1/2"	64'-7"
9	-64'-1 1/2"	-0'-8 1/2"	64'-1 1/2"
10	-64'-0"	6'-2"	64'-3 1/2"
11	-63'-8 1/2"	-2'-5 1/2"	63'-9"
12	-63'-7 1/2"	1'-6 1/2"	63'-8"
13	-63'-3"	8'-0"	63'-9"
14	-62'-8 1/2"	-2'-6 1/2"	62'-9"
15	-62'-2"	5'-5"	62'-4 1/2"
16	-61'-4 1/2"	7'-3"	61'-10"
17	-60'-11"	-2'-8 1/2"	60'-11 1/2"
18	-60'-2"	7'-10 1/2"	60'-8 1/2"
19	-60'-0"	-6'-10"	60'-4 1/2"
20	-60'-0"	-11'-4"	61'-0 1/2"
21	-59'-11"	-2'-9 1/2"	60'-0"
22	-59'-7 1/2"	-9'-3 1/2"	60'-4"
23	-59'-6"	-4'-6 1/2"	59'-8 1/2"
24	-59'-5 1/2"	-9'-2 1/2"	60'-2"
25	-57'-6 1/2"	-11'-9"	58'-8 1/2"
26	-57'-4 1/2"	-3'-8"	57'-6"
27	-57'-3 1/2"	-9'-7"	58'-1"
28	-57'-2"	-9'-8 1/2"	58'-0"
29	-57'-0 1/2"	8'-3 1/2"	57'-7 1/2"
30	-55'-11 1/2"	-7'-6 1/2"	56'-6"
31	-55'-1 1/2"	-2'-10 1/2"	55'-2 1/2"
32	-53'-11"	8'-8 1/2"	54'-7"
33	-53'-8 1/2"	-6'-8 1/2"	54'-1 1/2"
34	-52'-11 1/2"	8'-0 1/2"	53'-6 1/2"
35	-52'-10 1/2"	-13'-10"	54'-8"
36	-52'-6"	0'-3"	52'-6"
37	-52'-2"	9'-10 1/2"	53'-1 1/2"
38	-51'-6"	6'-0"	51'-10"
39	-51'-1"	-3'-7"	51'-2 1/2"
40	-51'-1"	7'-3 1/2"	51'-7 1/2"
41	-50'-10 1/2"	3'-0"	50'-11 1/2"
42	-50'-8 1/2"	7'-10"	51'-4"
43	-50'-4"	9'-1 1/2"	51'-2"
44	-49'-10 1/2"	4'-0"	50'-0 1/2"
45	-49'-8 1/2"	-7'-5"	50'-3"
46	-49'-7 1/2"	5'-2 1/2"	49'-11"
47	-49'-1"	2'-8"	49'-2"
48	-48'-10 1/2"	7'-1"	49'-4 1/2"
49	-48'-6"	-0'-5"	48'-6"
50	-47'-1"	-4'-3"	47'-3 1/2"
51	-36'-8"	11'-10"	38'-6"
52	-35'-7 1/2"	8'-9"	36'-8 1/2"
53	-35'-4 1/2"	14'-2"	38'-1"
54	-33'-7"	8'-8 1/2"	34'-8 1/2"
55	-33'-1 1/2"	5'-2"	33'-6 1/2"
56	-31'-9"	1'-4"	31'-9"
57	-30'-4"	-2'-6"	30'-5 1/2"
58	-29'-10 1/2"	10'-11 1/2"	31'-9 1/2"
59	-29'-3 1/2"	6'-7"	30'-0 1/2"



FOOTINGS ORDINATE TABLE			
HOLE	X	Y	DIAG
60	-29'-0 1/2"	9'-1"	30'-5"
61	-27'-11"	2'-9"	28'-0 1/2"
62	-27'-6 1/2"	-10'-2"	29'-4"
63	-27'-6 1/2"	-10'-2"	29'-4"
64	-27'-5 1/2"	13'-1 1/2"	30'-5 1/2"
65	-26'-6"	-1'-1"	26'-6 1/2"
66	-25'-5 1/2"	7'-11 1/2"	26'-8"
67	-24'-9 1/2"	12'-11"	27'-11 1/2"
68	-24'-1"	4'-1 1/2"	24'-5"
69	-23'-8 1/2"	-8'-9"	25'-3"
70	-22'-8"	0'-3 1/2"	22'-8"
71	-21'-7"	2'-11 1/2"	21'-9 1/2"
72	-20'-5 1/2"	5'-2 1/2"	21'-1 1/2"
73	-20'-1 1/2"	6'-9 1/2"	21'-3"
74	-19'-10 1/2"	-7'-4 1/2"	21'-2"
75	-19'-10 1/2"	-7'-4 1/2"	21'-2"
76	-17'-2"	6'-3"	18'-3"
77	-15'-8 1/2"	8'-10"	18'-0 1/2"
78	-10'-11 1/2"	2'-6 1/2"	11'-3"
79	0'-0"	0'-0"	0'-0"

* IN GROUND 91708 EXTENSION REQUIRED

2 WEST HALF: FOOTING ORDINATE CHART



1 EAST HALF: FOOTING LAYOUT
 Scale: FULL SIZE 22" x 34": 1" = 5'
 Scale: HALF SIZE 11" x 17": 1" = 10'

5-12 PLAYGROUND SHEET NOTES:

- All work shall be in conformance with 2020 AK DOT Standard Specifications.
- See Sheet L1 for Legend and General Notes.
- See Details Sheet L9 for Footing Details and Table.
- See Sheets L 6 & L 7 for footing layout. On non-lettered holes, to ensure concrete requirements please refer to each components installation sheets.
- In existing play areas, maintain existing drainage pattern and finish grade. In expanded play areas, continue same drainage pattern.
- Compact subgrade and wear course to 95% compaction prior to installation of interlocking tiles.
- Install playground equipment as per manufacturer's installation instructions and per CPSC 2026 and ASTM F1487-25.
- On non-lettered holes, to ensure concrete requirements please refer to each components installation sheets.
- If compacted stone is required below subgrade, please contact GameTime for custom footer details.
- Field verify that footing layout will result in use zone compliance with CPSC 2026 and ASTM F1487-25. ALL play items must be at least 6' from other structures, such as existing light pole.
- If footing size is different on plans vs installation sheets, installer shall defer to larger footing size.

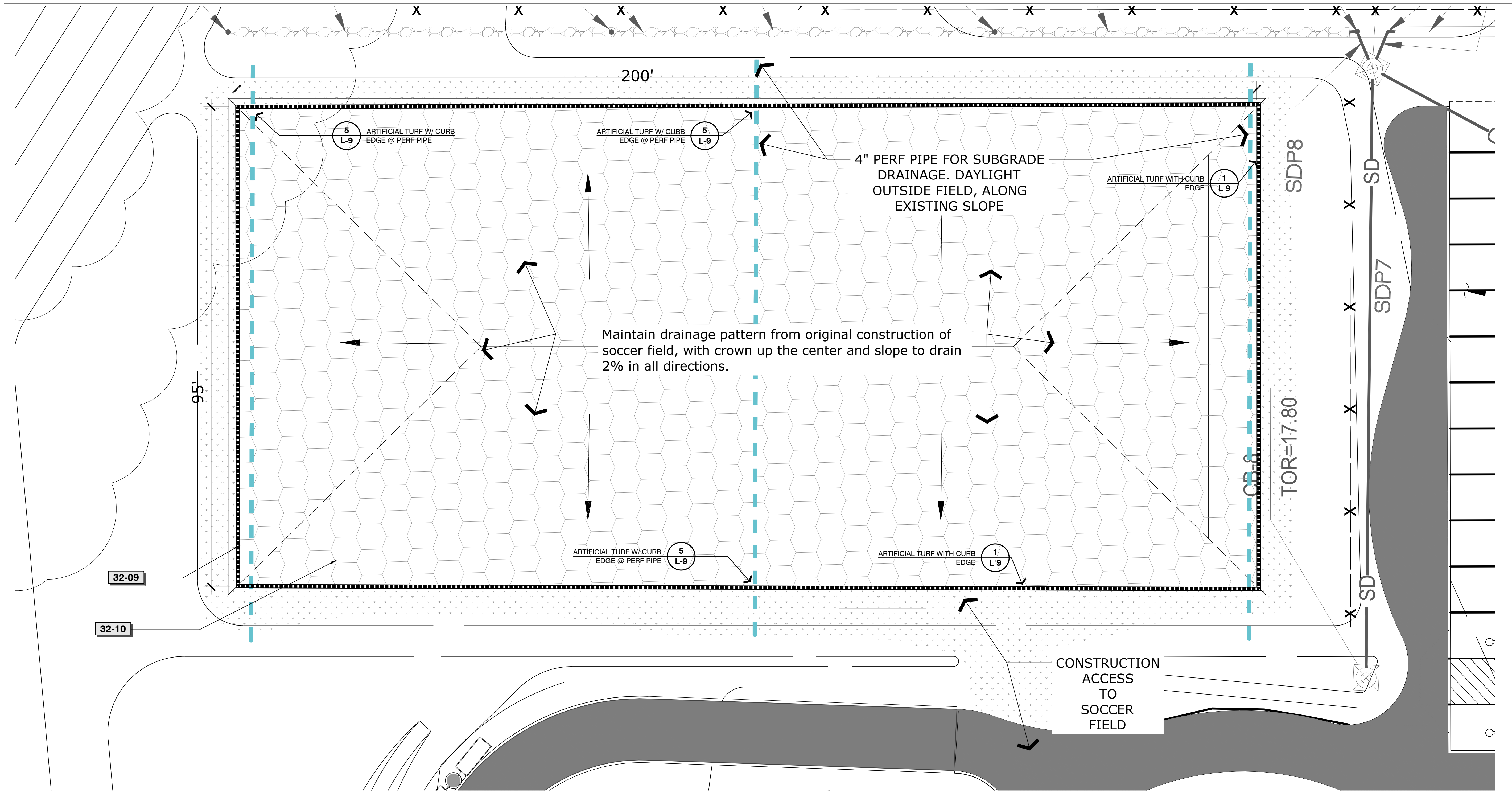
MAIN OFFICE: 435-245-5055
 975 SOUTH HWY 89
 LOGAN UT 84321

SALES REPRESENTATIVE:
 NANCY CASEY
 907-394-2577
 nancy@gwpark.com

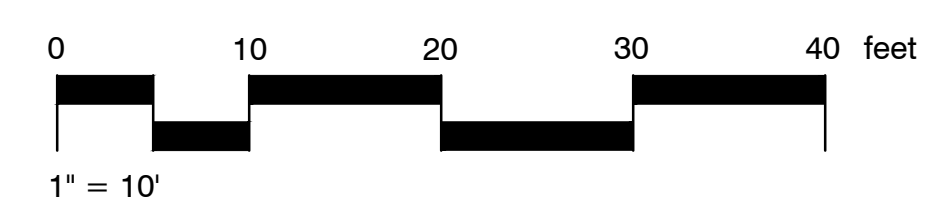
By	Revision	Date
MA	Details (including nailer board type and attachment requirements), footing types, footing quantities, notes, deadline.	04/13/26
1		

Unalaska City School District
 55 E Broadway, Unalaska
Eagle's View Elementary
 503 East Broadway, Unalaska

PROJECT/QUOTE #	117777-01-01 117777-02-01
DATE	03/14/2026
SHEET TITLE	EAST HALF FOOTINGS
SHEET NO:	L-7



1 SOCCER FIELD
 Scale: FULL SIZE 22" x 34": 1" = 10'
 Scale: HALF SIZE 11" x 17": 1" = 20'



32 Site Development					
SYMBOL	CODE	DESCRIPTION	QTY	DETAIL	
	32-01	Unitary Surfacing 2-5 Area	1,257 sf		
	32-02	Unitary Surfacing for 5-12 Area 4.25" Interlocking Tiles	8,183 sf		
	32-05	New 6"x6" Concrete Curb	128 lf	3/L-9	
	32-06	New Curb - with weep holes	97 lf	4/L-9	
	32-09	Concrete Curb around Turf Field	591 lf	1/L-9	
	32-10	Artificial Turf Field. Remove and dispose of top 6" exist. sod and soil. Build back with gravel as per plans and details.	18,683 sf	1/L-9	
	32-11	Topsoil & Seed disturbed areas	4,466 sf		
	32-12	4" Perforated Pip	340 lf	1/L-9	

SHEET NOTES:

- All work shall be in conformance with 2020 AK DOT Standard Specifications.
- Remove minimum 6" existing sod and topsoil. Dispose off site.
- Rebuild field as per Details 1 and 5 on Sheet L 9.

1

GREAT WESTERN RECREATION
 MAIN OFFICE: 435-245-5055
 975 SOUTH HWY 89
 LOGAN UT 84321
 SALES REPRESENTATIVE:
 NANCY CASEY
 907-394-2577
 nancy@gwpark.com



Date	Revision	By
1 04/13/26	Details (including nailer board type and attachment requirements), footing types, footing quantities, notes, deadline.	MA

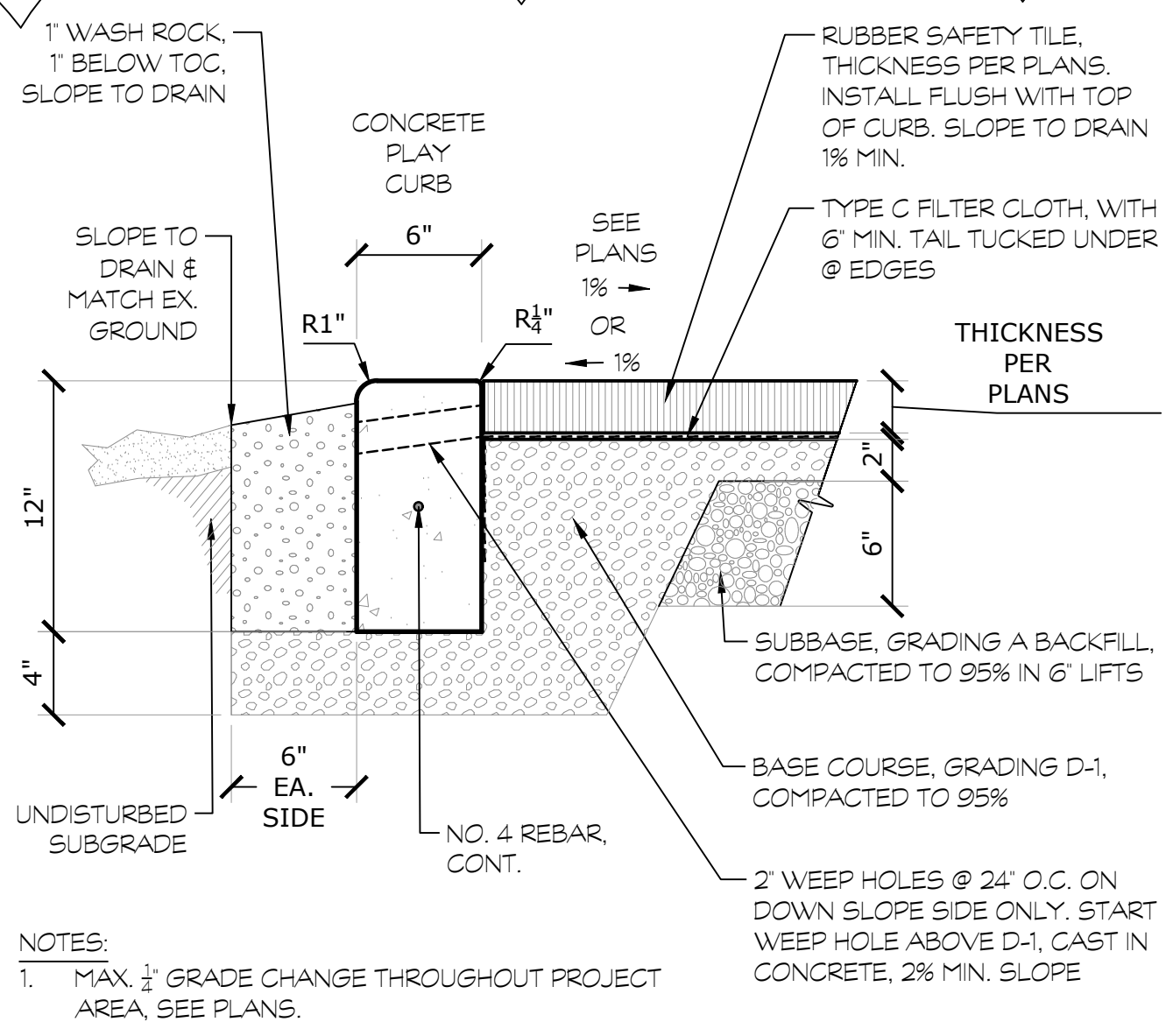
Unalaska City School District
 55 E Broadway, Unalaska
Eagle's View Elementary
 503 East Broadway, Unalaska

PROJECT/QUOTE #
 117777-01-01
 117777-02-01
 DATE
 03/14/2026
 SHEET TITLE
SOCCER FIELD
 SHEET NO:
L-8

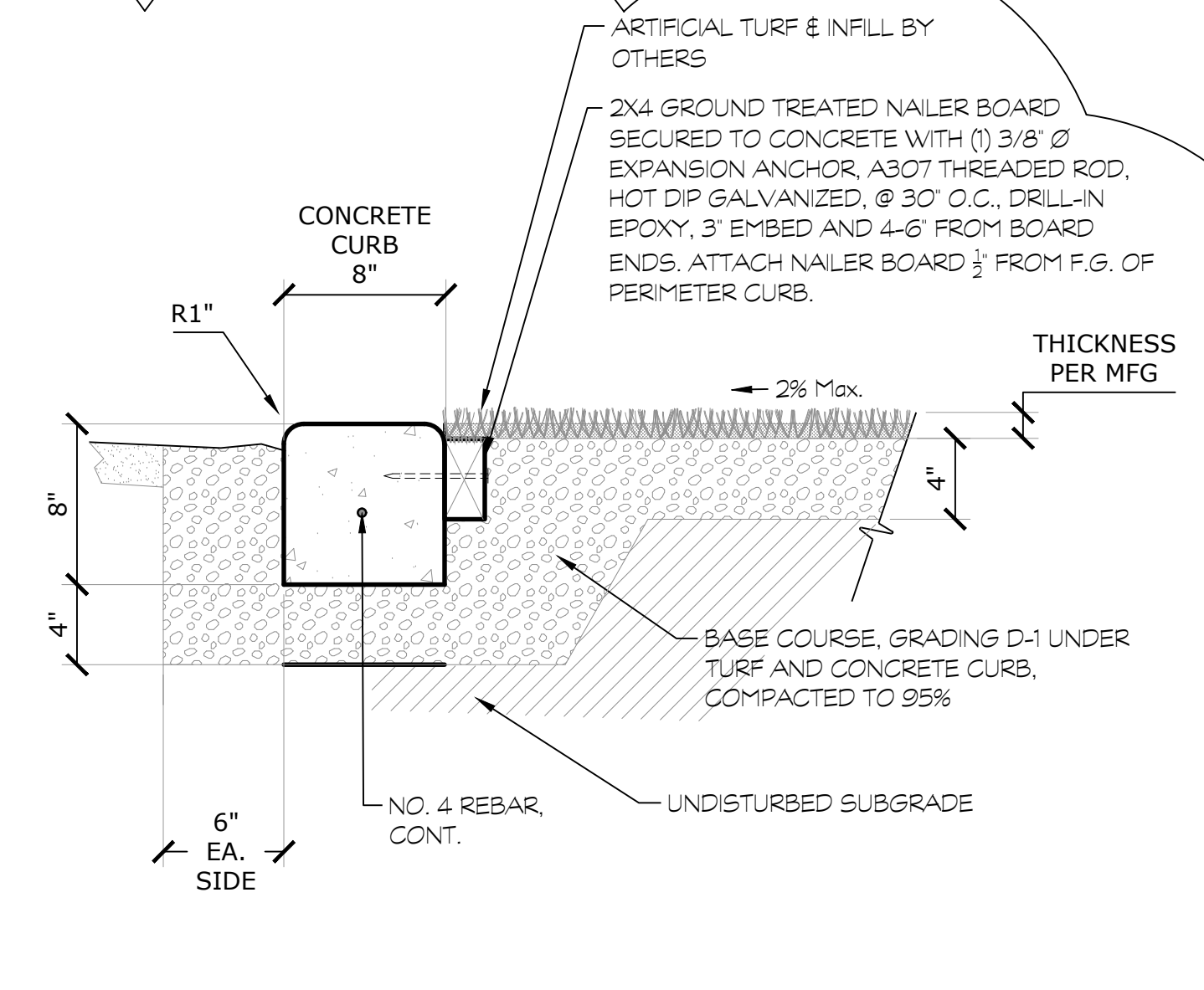
FOOTINGS TABLE			
TYPE	DIAMETER/SIDE	DEPTH*	QTY.
B	1'-2" [35.56cm]	2'-6" [76.20cm]	8
D	2'-0" [60.96cm]	2'-6" [76.20cm]	7
G	4'-0" [121.92cm]	3'-6" [106.68cm]	1
M	2'-0" [60.96cm]	3'-6" [106.68cm]	2
5316/5317 Swings	2'-0"	3'-0"	8
5374 Aurora Spinner	5'-0" square	1'-3"	1
6243 Tri-Runner	4'-0"	5'-0"	1
38020 Rockin Robin	2' Square	3'-6"	1

*DEPTH IS MEASURED FROM FINISHED GRADE

1



4 PLAY CURB ALONG NATURAL AREA W/ WEEP HOLES
1/2" = 1'-0" P-EA-04



1 ARTIFICIAL TURF WITH CURB EDGE
1/2" = 1'-0" P-SU-02

7 WEST HALF 5-12 FOOTING SUMMARY

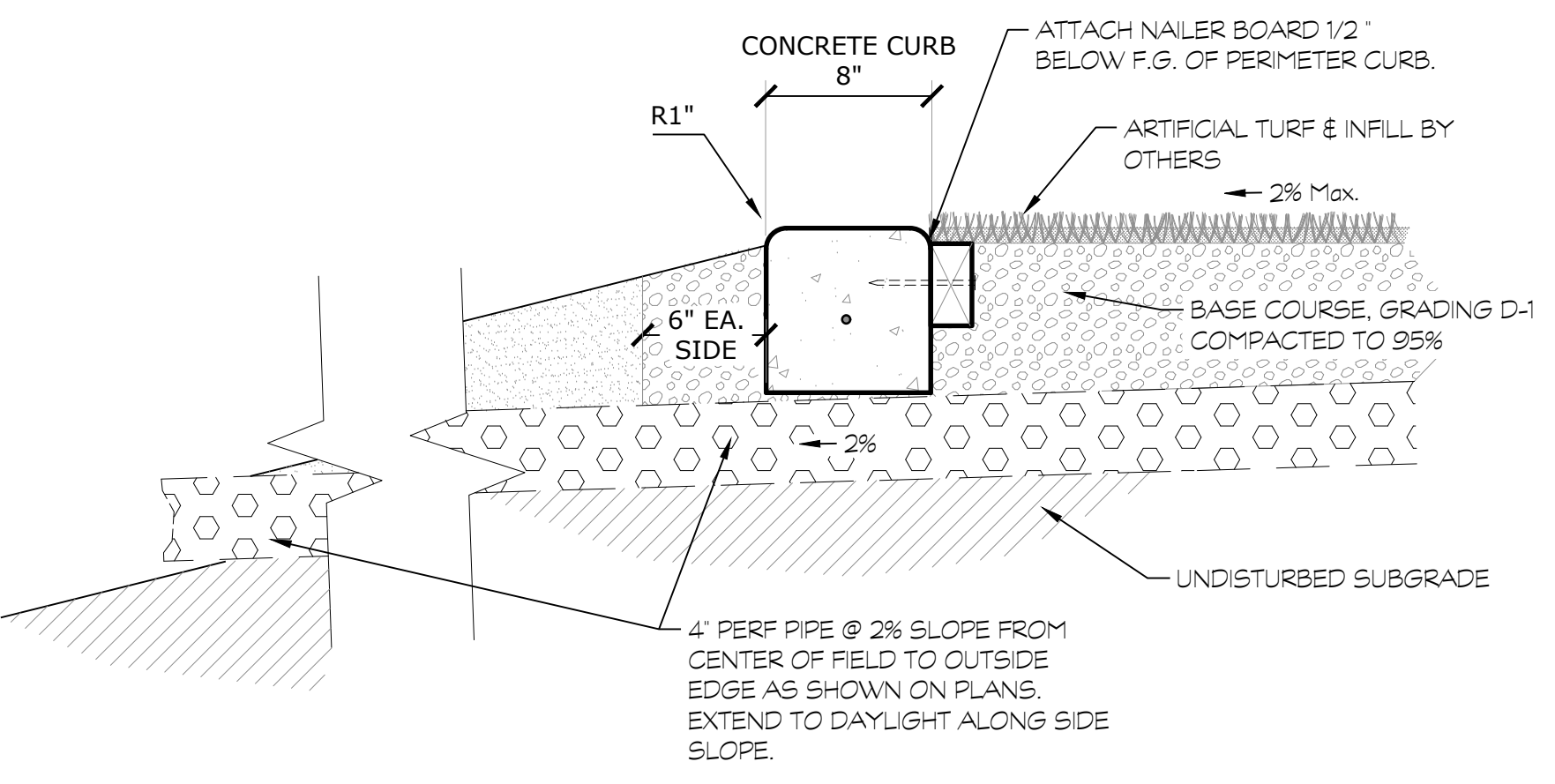
FOOTINGS TABLE			
TYPE	DIAMETER/SIDE	DEPTH*	QTY.
A	1'-6" [45.72cm]	2'-6" [76.20cm]	18
B	1'-2" [35.56cm]	2'-6" [76.20cm]	33
N	1'-6" [45.72cm]	3'-6" [106.68cm]	8
38239 Tree Stump	2'-0" Square	2'-1"	3
91320 Stump Platform	2'-1 x 2'-6"	1'-8"	1
14927 Sign	1'-6"	1'-9"	1
Mosasaur	100 s.f.	12" thick	1

*DEPTH IS MEASURED FROM FINISHED GRADE

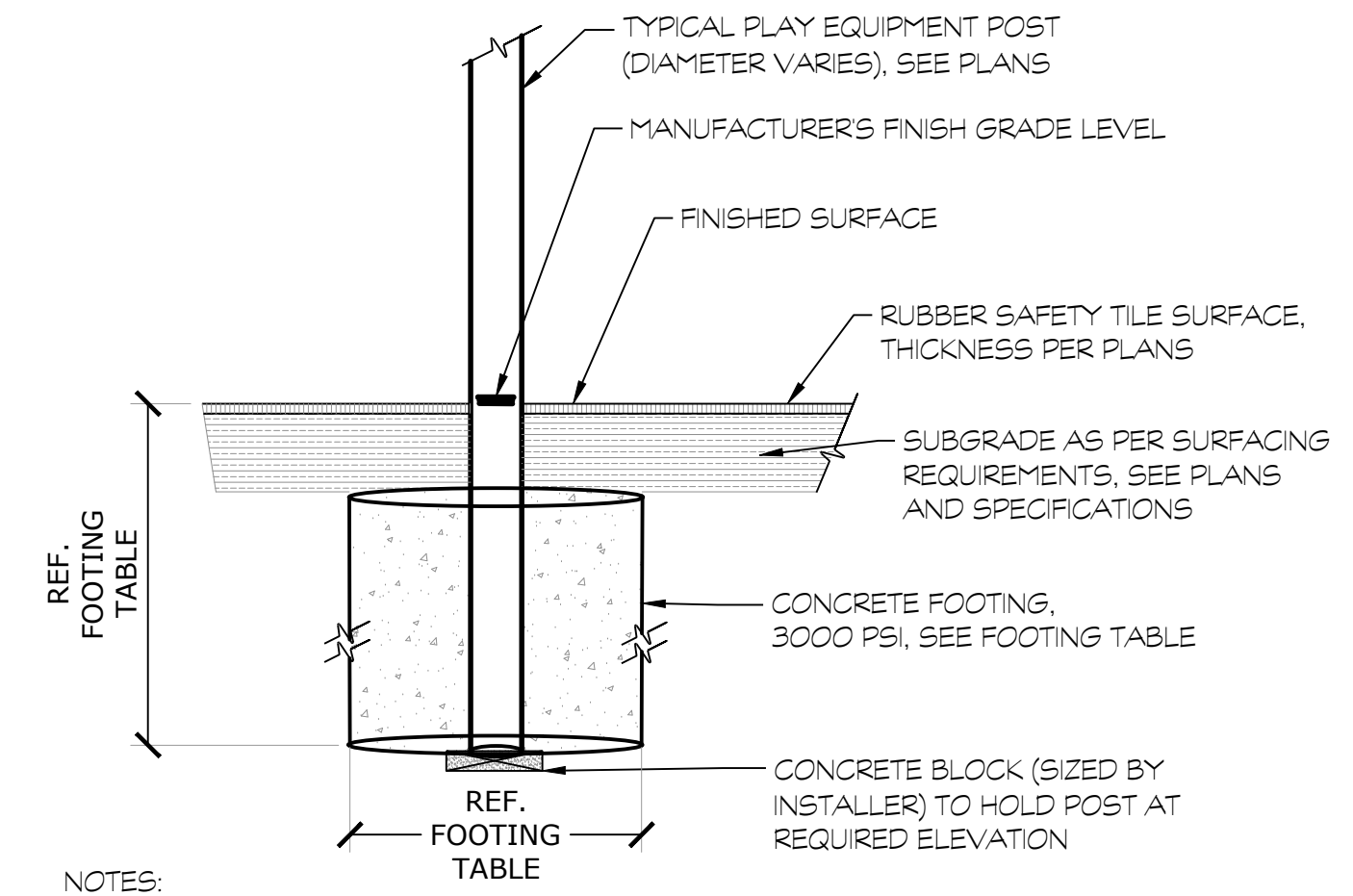
8 EAST HALF 5-12 FOOTING SUMMARY

FOOTINGS TABLE			
TYPE	DIAMETER/SIDE	DEPTH*	QTY.
A	1'-6" [45.72cm]	2'-6" [76.20cm]	24
B	1'-2" [35.56cm]	2'-6" [76.20cm]	25
91284	3'-0" Square	1'-8"	1

*DEPTH IS MEASURED FROM FINISHED GRADE



5 ARTIFICIAL TURF W/ CURB EDGE @ PERF PIPE
1/2" = 1'-0" P-EA-05



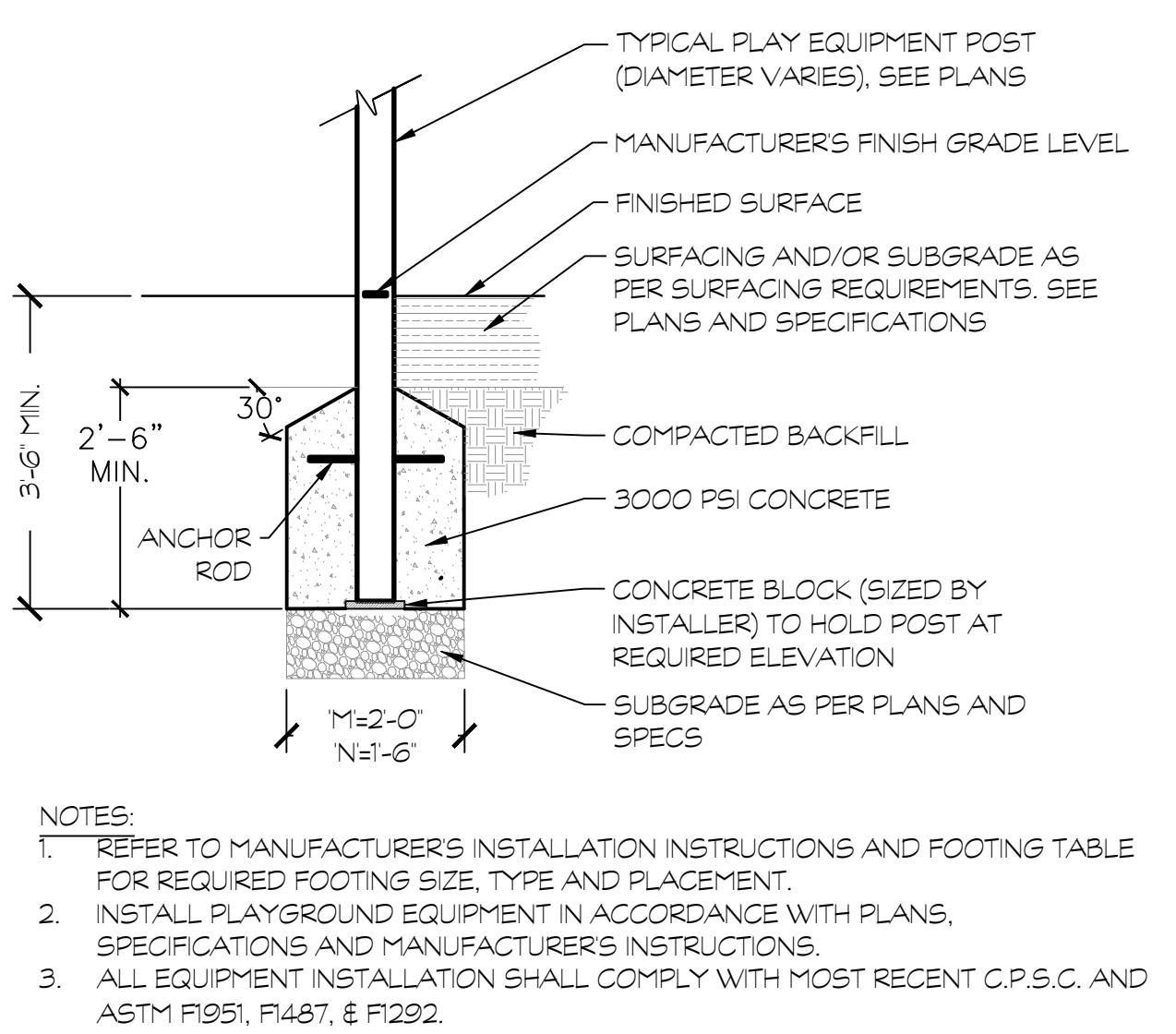
2 TYPICAL PLAY FOOTING IN SAFETY TILES
NOT TO SCALE P-GW-FOO-TYP-01

9 2-5 PLAY AREA FOOTING SUMMARY

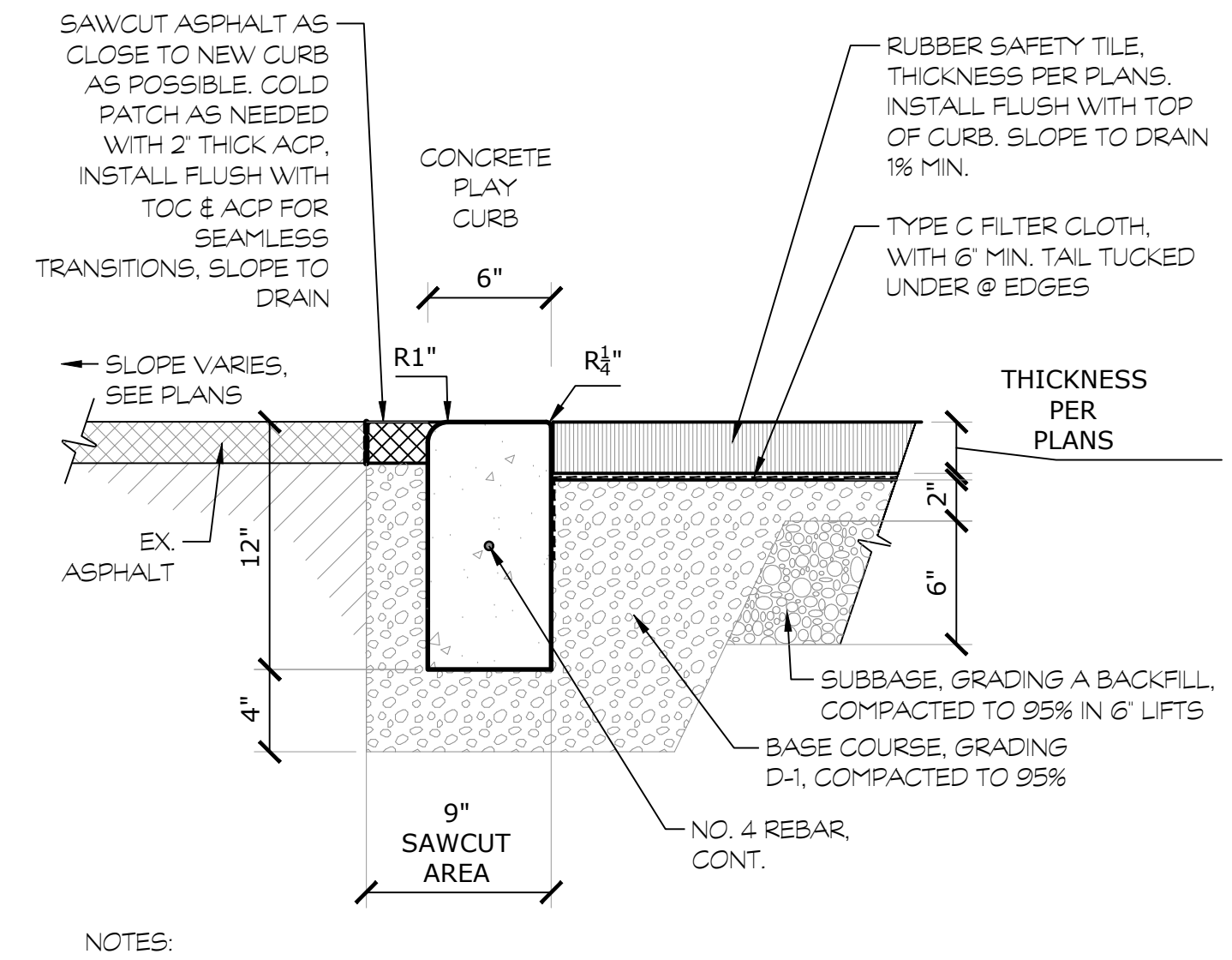
FOOTING TABLE NOTES:

1. Install playground equipment as per manufacturer's installation instructions. Field verify that footing layout will result in use zone compliance with CPSC 2026 and ASTM F1487-25. ALL play items must be at least 6' from other structures, such as existing light pole, fencing, curbing.
2. All sub-base, base course and concrete materials shall be in conformance with 2020 AK DOT Standard Specifications.
3. Refer to manufacture's installation instructions for Cubic Yard estimates for footings. Note that depth is measured from finished grade.
4. Where footing dimensions on plans differ from those in the installation instructions, the larger sized footing design shall prevail.
5. Non-lettered holes: Refer to each component's installation sheets to ensure concrete requirements are adequate for the following:
 - 5.1. 38239 Tree Stump
 - 5.2. 38020 Rockin' Robin
 - 5.3. 6243 Tri-Runner
 - 5.4. 5374 Aurora Spinner
 - 5.5. 91284 Tree Stump
 - 5.6. Custom: Mosasaur Climber
 - 5.7. 91320 Stump Climber
 - 5.8. 14927 Sign
 - 5.9. 5316 / 5317 Swings

1



6 'M' AND 'N' PLAYGROUND FOOTING DETAIL
1/2" = 1'-0" P-EA-07



3 PLAY CURB ALONG EXISTING ASPHALT
1/2" = 1'-0" P-SU-01

1

GREAT WESTERN RECREATION

MAIN OFFICE: 435-245-5055
975 SOUTH HWY 89
LOGAN UT 84321

SALES REPRESENTATIVE:
NANCY CASEY
907-394-2577
nancy@gwpark.com

STATE OF ALASKA
49TH
Monique S. Anderson
No.10961
PROFESSIONAL LANDSCAPE ARCHITECT

Date Stamped: 04/14/2026

By	Revision	Date
MA	Details (including nailer board type and attachment requirements), footing types, footing quantities, notes, deadline.	04/13/26
1		

Unalaska City School District
55 E Broadway, Unalaska

Eagle's View Elementary

503 East Broadway, Unalaska

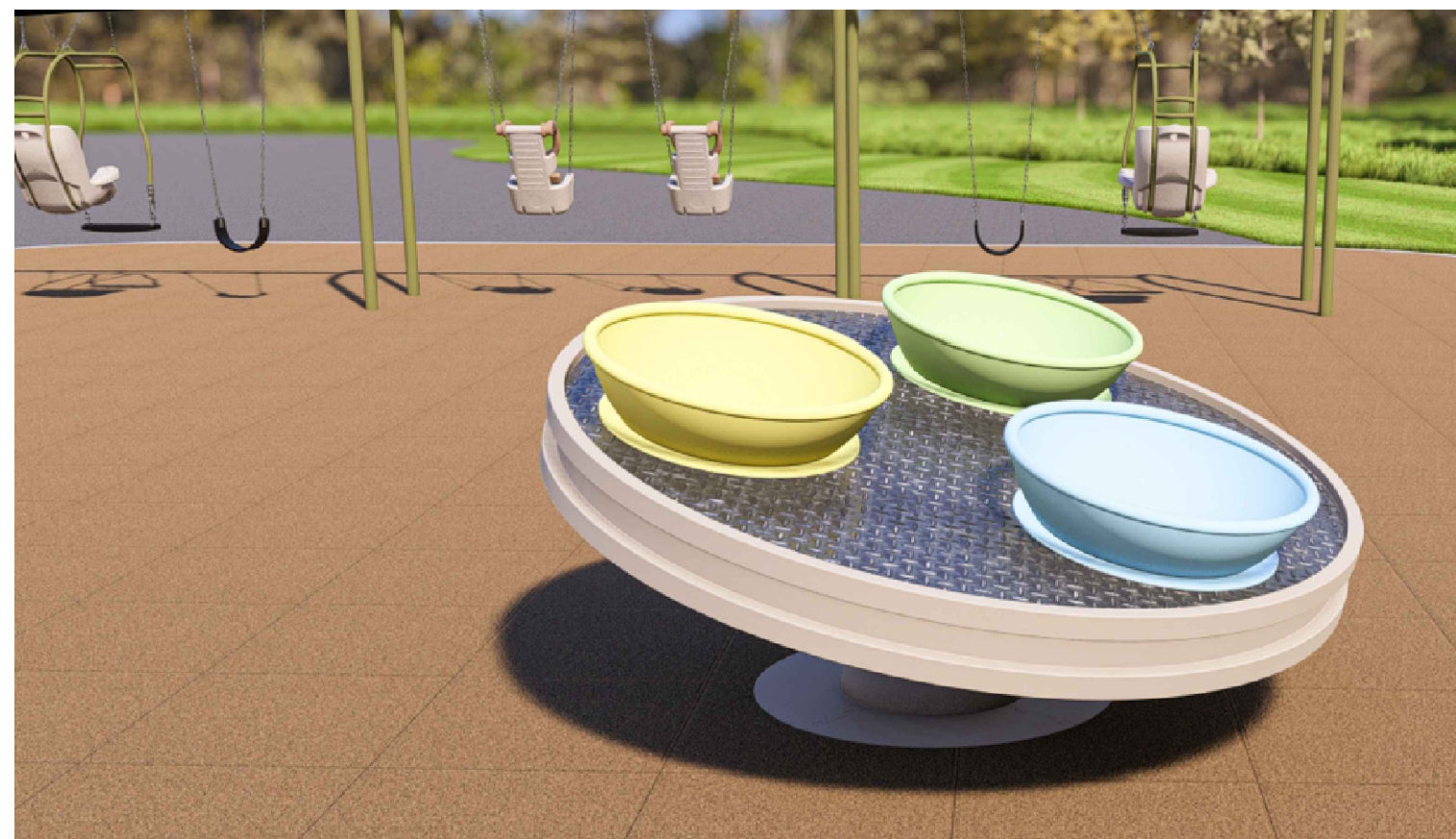
PROJECT/QUOTE #	117777-01-01 117777-02-01
DATE	03/14/2026
SHEET TITLE	DETAILS
SHEET NO:	L-9



TRI-RUNNER



CUSTOM GFRC
DINOSAUR CLIMBER



AURORA SPINNER
& SWINGS



ZIP LINE



1 5-12 PLAY STRUCTURE



2 5-12 PLAY STRUCTURE



MAIN OFFICE: 435-245-5055
975 SOUTH HWY 89
LOGAN UT 84321

SALES REPRESENTATIVE:
NANCY CASEY
907-394-2577
nancy@gwpark.com

Revision	By	Date
1	MA	04/13/26

Details (including nailer board type and attachment requirements), footing types, footing quantities, notes, deadline.

Unalaska City School District
55 E Broadway, Unalaska
Eagle's View Elementary
503 East Broadway, Unalaska

PROJECT/QUOTE #
117777-01-01
117777-02-01

DATE
03/14/2026

SHEET TITLE
RENDERINGS

SHEET NO:
L-11



3 2-5 PLAYGROUND



1 PLAYGROUND OVERVIEW 1



4 2-5 PLAYGROUND



2 PLAYGROUND OVERVIEW 2



MAIN OFFICE: 435-245-5055
975 SOUTH HWY 89
LOGAN UT 84321

SALES REPRESENTATIVE:
NANCY CASEY
907-394-2577
nancy@gwpark.com

Revision	By	Date	Details (including nailer board type and attachment requirements), footing types, footing quantities, notes, deadline.
1	MA	04/13/26	

Unalaska City School District
55 E Broadway, Unalaska
Eagle's View Elementary
503 East Broadway, Unalaska

PROJECT/QUOTE #
117777-01-01
117777-02-01

DATE
03/14/2026

SHEET TITLE
RENDERINGS

SHEET NO:
L-10